

WAAS CH 78244 W22A	APP CRS 222°	Rwy Idg TDZE Apt Elev	12020 3950 3962
--	------------------------	-----------------------------	--

RNAV (GPS) Y RWY 22

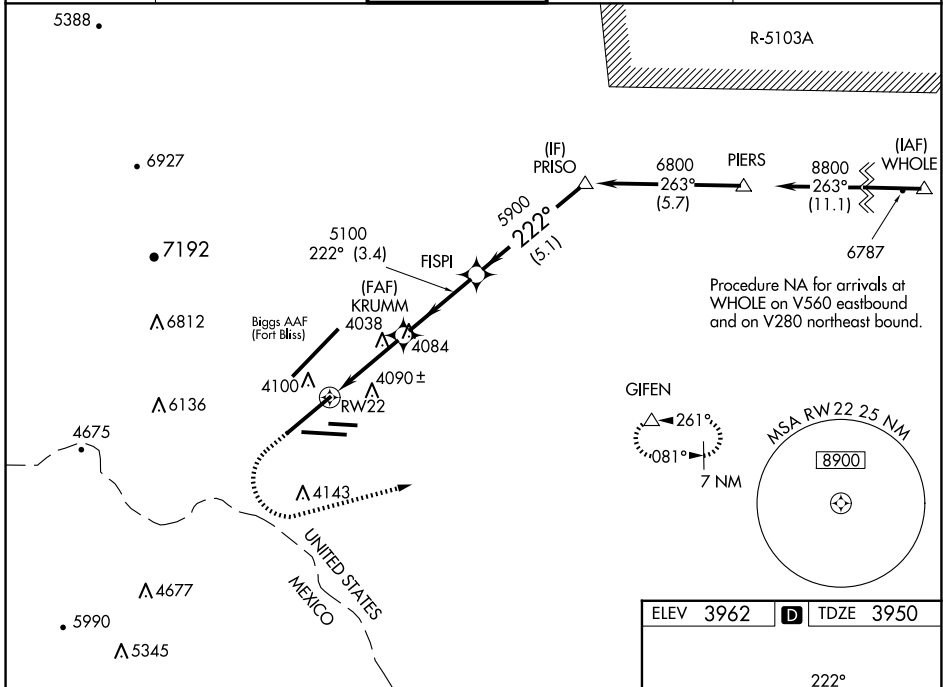
EL PASO INTL (ELP)

RNP APCH - GPS.

ASR Circling NA for Cat D north of Rwy 26R and northwest of Rwy 4. For uncompensated Baro-VNAV systems, LNAV/VNAV NA below -5°C or above 54°C. For inop ALS increase LNAV/VNAV Cats A/B/C visibility to RVR 4000, Cat D visibility to RVR 4500 and LNAV Cat C/D visibility to RVR 5500.

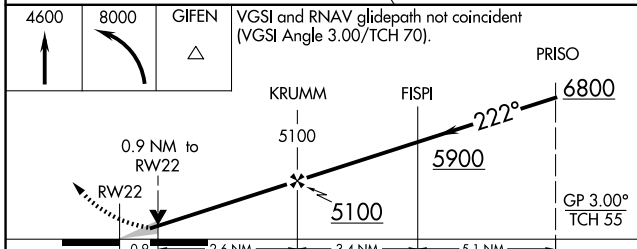
MALS MISSED APPROACH: Climb to 4600 then climbing left turn to 8000 direct GIFEN and hold, continue climb-in-hold to 8000.

D-ATIS 120.0 254.3	EL PASO APP CON 124.25 298.85	EL PASO TOWER 118.3 239.275	GND CON 121.9 348.6	CLNC DEL 125.0 379.1
------------------------------	---	--	-------------------------------	--------------------------------

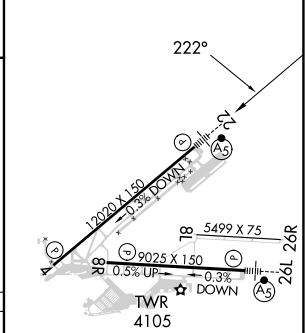


SC-3, 20 MAR 2025 to 17 APR 2025

SC-3, 20 MAR 2025 to 17 APR 2025



ELEV 3962	D TDZE 3950
-----------	--------------------



CATEGORY	A	B	C	D
LPV DA	4150/24 200 (200-½)			
LNAV/VNAV DA	4200/24 250 (300-½)			4221/24 271 (300-½)
LNAV MDA	4300/24 350 (400-½)	4300/30 350 (400-¾)		
C CIRCLING	4420-1 458 (500-1)	4440-1 478 (500-1)	4480-1½ 518 (600-1½)	4680-2¼ 718 (800-2¼)

MIRL Rwy 8L-26R
REIL Rwys 4 and 8R
HIRL Rwys 4-22 and 8R-26L