

LOC I-FMY <b>110.7</b>	APP CRS <b>051°</b>	Rwy Idg <b>5545</b> TDZE <b>15</b> Apt Elev <b>17</b>
---------------------------	------------------------	---

# ILS or LOC RWY 5

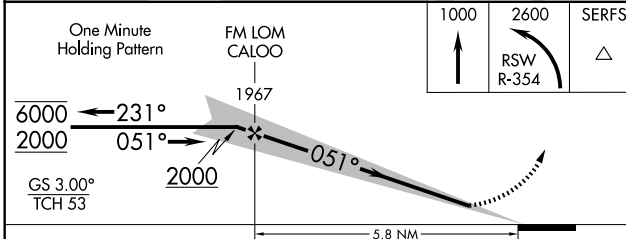
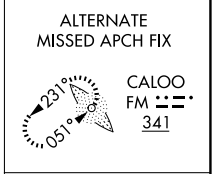
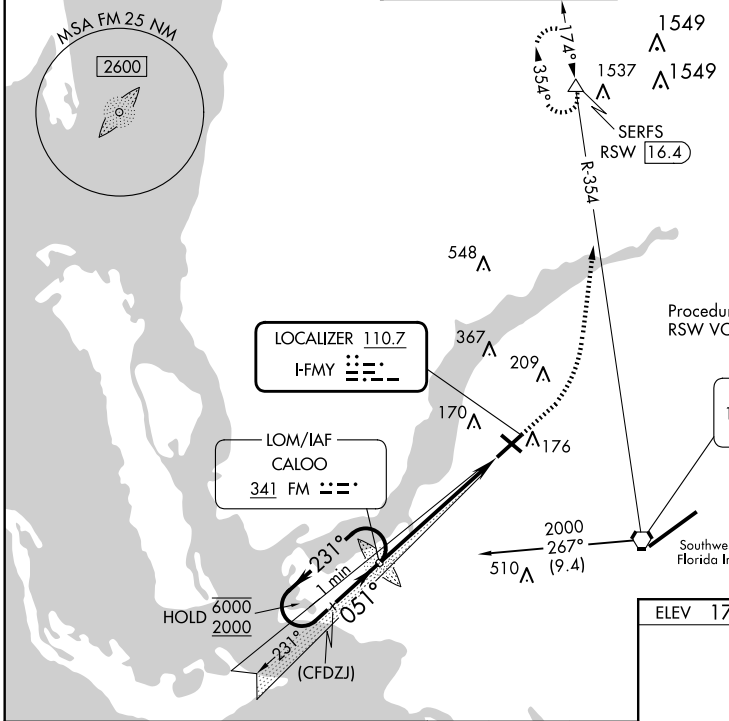
PAGE FLD (FMY)

ADF or RADAR required for procedure entry. ADF required for LOC only.  
DME Required.

**⚠** Rwy 5 helicopter visibility reduction below  $\frac{3}{4}$  SM NA. When Circling to Rwy 31 at night, operational VGSI required, remain on or above VGSI glidepath until threshold.

MISSED APPROACH: Climb to 1000 then climbing left turn to 2600 on RSW VORTAC R-354 to SERFS/RSW 16.4 DME and hold.

ATIS <b>123.725</b>	FORT MYERS APP CON ★ <b>125.15 306.2</b> (Rwys 5, 13) <b>126.8 306.2</b> (Rwys 23, 31)	PAGE TOWER ★ <b>119.0</b> (CTAF) <b>306.95</b>	GND CON <b>121.7</b>	CLNC DEL <b>121.7</b>
------------------------	--	---	-------------------------	--------------------------



ELEV 17	<b>D</b>	TDZE 15
---------	----------	---------

TWR 100

REIL Rwys 5, 13, 23 and 31  
MIRL Rwy 5-23 and 13-31

FAF to MAP 5.8 NM

Knots	60	90	120	150	180
Min:Sec	5:48	3:52	2:54	2:19	1:56

SE-3, 20 MAR 2025 to 17 APR 2025

SE-3, 20 MAR 2025 to 17 APR 2025