

# HI-ILS or LOC Z RWY 26

LOC I-ABM <b>109.9</b>	APCH CRS <b>258°</b>	Rwy Idg 10,002	TDZE 8	Arprt Elev 8
---------------------------	-------------------------	-------------------	-----------	-----------------

[USAF]

LANGLEY AFB (KLFJ)

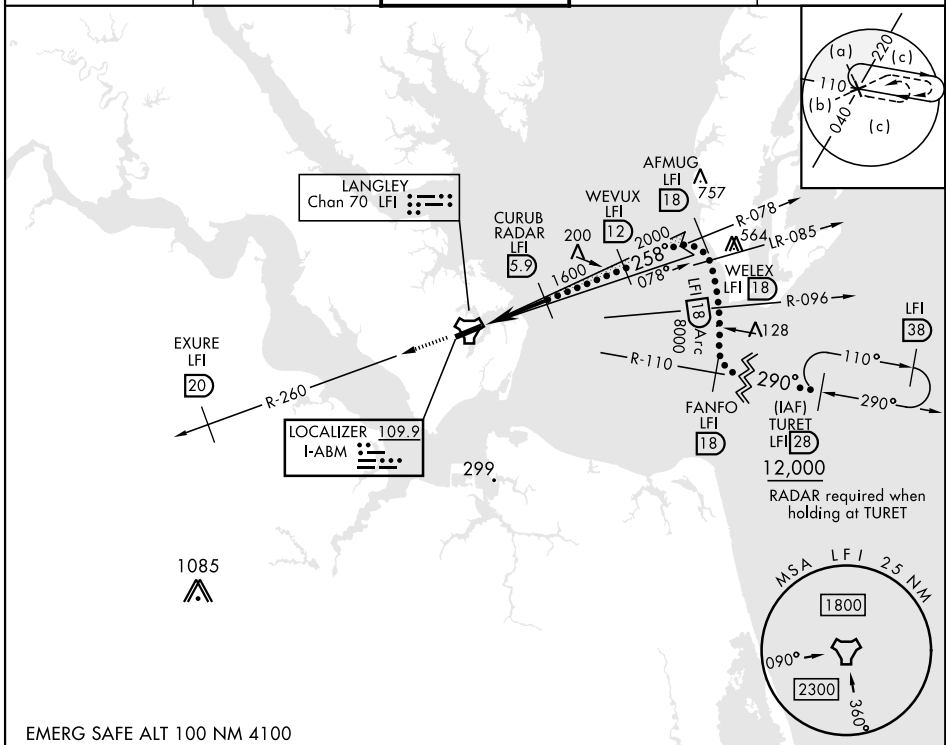
RADAR or DME required.



MISSED APPROACH: Climb to 3000 via LFI R-260 to 20 DME (EXJURE), then as instructed by ATC.

- \*When ALS inop, increase RVR to 40, vis to 3/4 mile.
- \*\*When ALS inop, increase RVR to 55, vis to 1 miles.
- \*\*\*Circling S of Rwy 8-26 not authorized.

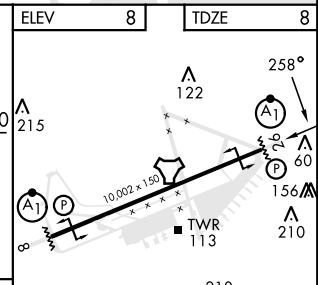
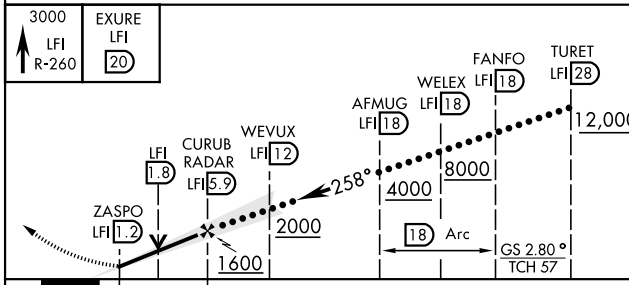
ATIS ★ <b>270.1</b>	NORFOLK APP CON <b>125.7 335.625</b>	TOWER ★ <b>125.0 253.5</b>	GND CON <b>121.7 275.8</b>	CLNC DEL <b>118.85 257.625</b>
------------------------	---	-------------------------------	-------------------------------	-----------------------------------



NE-3, 20 MAR 2025 to 17 APR 2025

NE-3, 20 MAR 2025 to 17 APR 2025

EMERG SAFE ALT 100 NM 4100



CATEGORY	C	D	E
S-ILS 26*	208/24	200	(200-1/2)
S-LOC 26**	380/35	372	(400-5/8)
CIRCLING ***	700-2 692 (700-2)	760-2 1/2 752 (800-2 1/2)	760-2 3/4 752 (800-2 3/4)

HIRL Rwy 8-26					
FAF to MAP 4.7 NM					
Knots	120	140	160	180	200
Min:Sec	2:21	2:01	1:46	1:34	1:25

# HI-ILS or LOC Z RWY 26