

HI-ILS or LOC Z RWY 8

LOC I-LFI 109.9	APCH CRS 078°	Rwy ldg TDZE Arpt Elev 10,002 8 8
---------------------------	-------------------------	-----------------------------------------------------------------------

[USAF]

LANGLEY AFB (KLFJ)

RADAR or DME required.



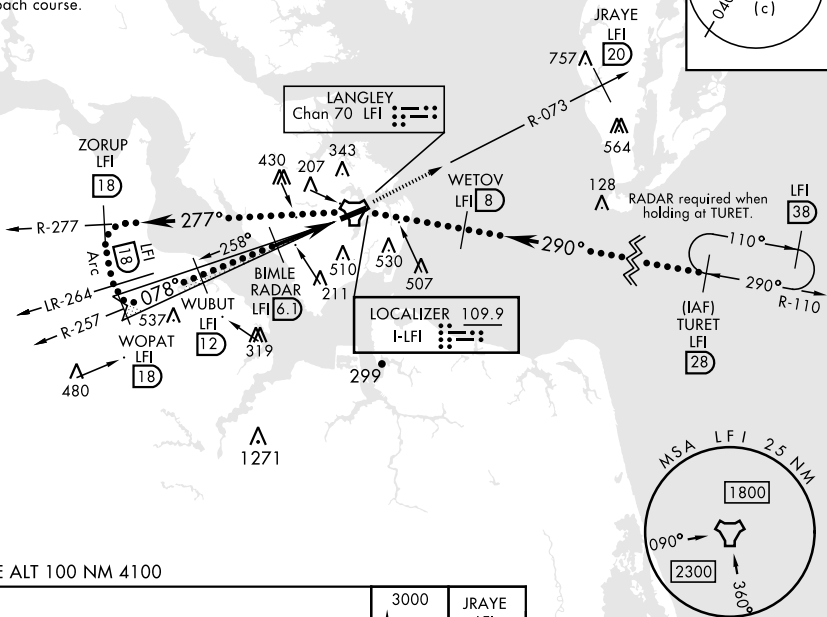
MISSED APPROACH: Climb to 3000 via LFI R-073 to 20 DME (JRAYE), then as instructed by ATC.

- When ALS inop, increase RVR to 40 and vis to 3/8 mile.
- When ALS inop, increase vis to 1 3/8 miles.
- Circling S of Rwy 8-26 not authorized.

ATIS ★ 270.1	NORFOLK APP CON 125.7 335.625	TOWER ★ 125.0 253.5	GND CON 121.7 275.8	CLNC DEL 118.85 257.625
------------------------	-----------------------------------------	-------------------------------	-------------------------------	-----------------------------------

Glideslope unusable for coupled approach below 750' MSL.

Expect RADAR vectors to IAF or Final Approach course.



NE-3, 20 MAR 2025 to 17 APR 2025

NE-3, 20 MAR 2025 to 17 APR 2025

EMERG SAFE ALT 100 NM 4100

WOPAT LFI 18	ZORUP LFI 18	TACAN	WETOV LFI 8	TURET LFI 28	ELEV	8	TDZE	8		
3000	3000	7000	7000	12,000	215					
2000	2000	5000	5000		122					
1600	1600									
CATEGORY		C	D	E						
S-ILS 8*		208/24	200	(200-1/2)						
S-LOC 8**		480/50	472	(500-1)						
CIRCLING ***		700-2 692 (700-2)	760-2 1/2 752 (800-2 1/2)	760-2 3/4 752 (800-2 3/4)	FAF to MAP 4.7 NM					
					Knots	120	140	160	180	200
					Min:Sec	2:21	2:01	1:46	1:34	1:25

HI-ILS or LOC Z RWY 8