

# HI-TACAN Z RWY 8

TACAN Chan <b>70</b>	LFI	APCH CRS <b>073°</b>	Rwy Ldg <b>10,002</b>
			TDZE <b>8</b>
			Arprt Elev <b>8</b>

[USAF]

LANGLEY AFB (KLFJ)

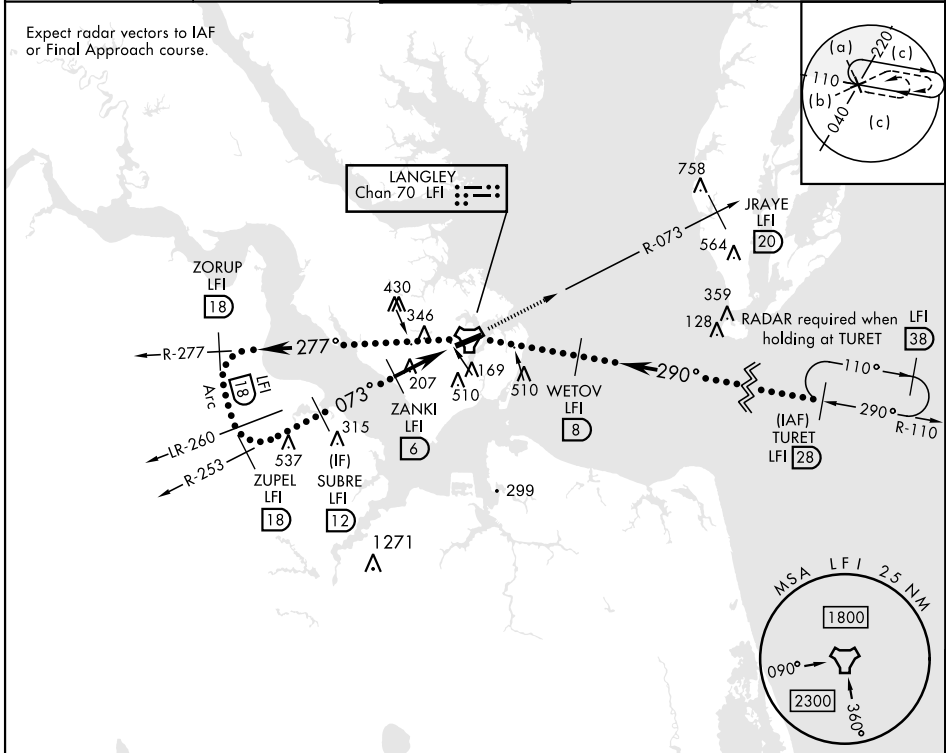
▼ \* When ALS inop, increase CAT CDE vis to 1 3/8 miles.  
 \*\* Circling S of Rwy 8-26 not authorized.



MISSED APPROACH: Climb to 3000 via LFI R-073 to 20 DME (JRAYE), then as instructed by ATC.

ATIS ★ <b>270.1</b>	NORFOLK APP CON <b>125.7 335.625</b>	TOWER ★ <b>125.0 253.5</b>	GND CON <b>121.7 275.8</b>	CLNC DEL <b>118.85 257.625</b>
------------------------	---	-------------------------------	-------------------------------	-----------------------------------

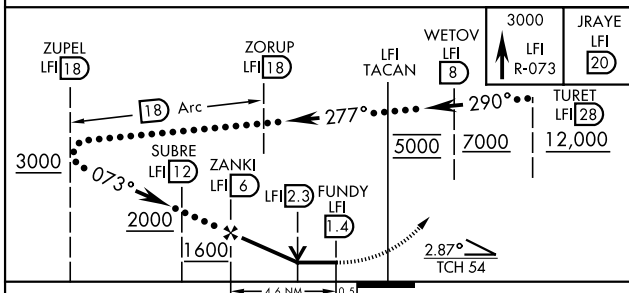
Expect radar vectors to IAF or Final Approach course.



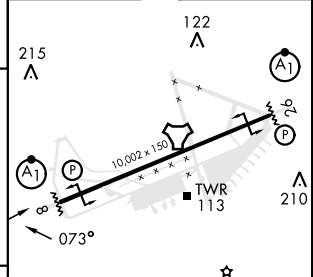
NE-3, 20 MAR 2025 to 17 APR 2025

NE-3, 20 MAR 2025 to 17 APR 2025

EMERG SAFE ALT 100 NM 4100



ELEV	8	TDZE	8
------	---	------	---



CATEGORY	C	D	E
S-8 *	480/50	472 (500-1)	
☐ CIRCLING **	700-2 692 (700-2)	760-2 1/2 752 (800-2 1/2)	760-2 3/4 752 (800-2 3/4)

HIRL Rwy 8-26  
 ☆ 210

# HI-TACAN Z RWY 8