

HAMPTON, VIRGINIA

# ILS or LOC Y RWY 26

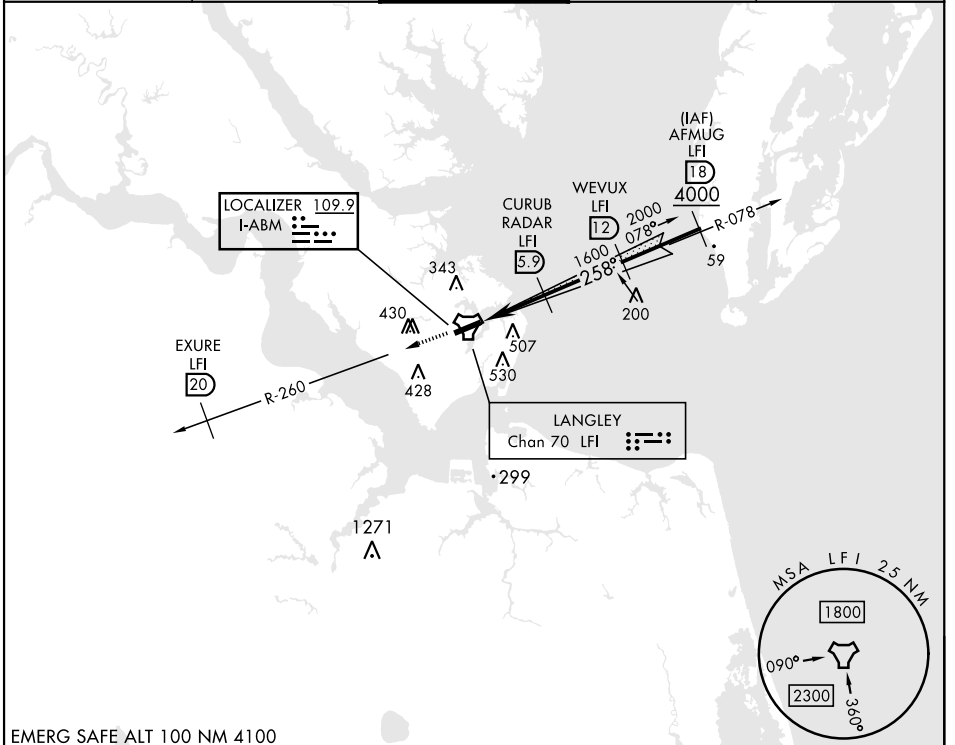
LOC I-ABM <b>109.9</b>	APCH CRS <b>258°</b>	Rwy Ldg <b>10,002</b>
		TDZE <b>8</b>
		Arprt Elev <b>8</b>

[USAF]

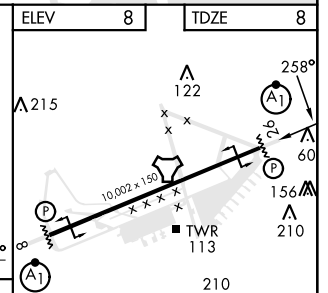
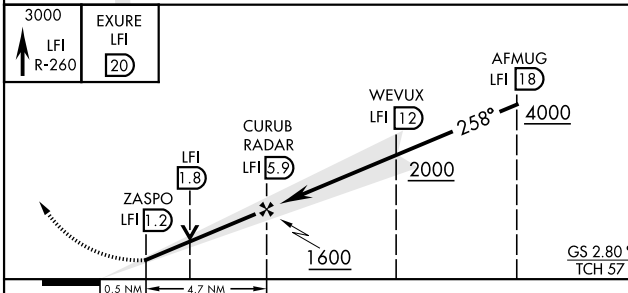
LANGLEY AFB (KLF1)

RADAR or DME required		ALSIF-1 	MISSED APPROACH: Climb to 3000 via LFI R-260 to 20 DME (EXURE), then as instructed by ATC.
<p>▼ * When ALS inop, increase RVR to 40 and vis to 3/4 miles.</p> <p>*** When ALS inop, increase RVR to 55 and vis to 1 1/2 miles.</p> <p>*** Circling S of Rwy 8-26 not authorized.</p>			

ATIS ★ <b>270.1</b>	NORFOLK APP CON <b>125.7 335.625</b>	TOWER ★ <b>125.0 253.5</b>	GND CON <b>121.7 275.8</b>	CLNC DEL <b>118.85 257.625</b>
------------------------	---	-------------------------------	-------------------------------	-----------------------------------



EMERG SAFE ALT 100 NM 4100



ELEV	8	TDZE	8		
CATEGORY	A	B	C	D	E
S-ILS 26*	208/24		200	(200-1/2)	
S-LOC 26**	380/24	372 (400-5/8)	380/35	372	(400-5/8)
CIRCLING ***	540-1	580-1	700-2	760-2 1/2	760-2 3/4
	532 (600-1)	572 (600-1)	692 (700-2)	752 (800-2 1/2)	752 (800-2 3/4)

HIRL Rwy 8-26	FAF to MAP 4.7 NM				
Knots	60	90	120	150	180
Min:Sec	4:42	3:08	2:21	1:53	1:34

HAMPTON, VIRGINIA

37°05'N-76°22'W

LANGLEY AFB (KLF1)

Amdt 7 11AUG22

# ILS or LOC Y RWY 26

NE-3, 20 MAR 2025 to 17 APR 2025

NE-3, 20 MAR 2025 to 17 APR 2025