

ILS or LOC Y RWY 8

LOC I-LFI 109.9	APCH CRS 078°	Rwy Ldg 10,002 TDZE Arprt Elev 8
---------------------------	-------------------------	--

[USAF]

LANGLEY AFB (KLFJ)

RADAR or DME required

* When ALS inop, increase RVR to 40 and vis to 3/4 mile.
 ** When ALS inop, increase CAT AB RVR to 55 and vis to 1 mile,
 CAT CDE vis to 1 3/8 miles.



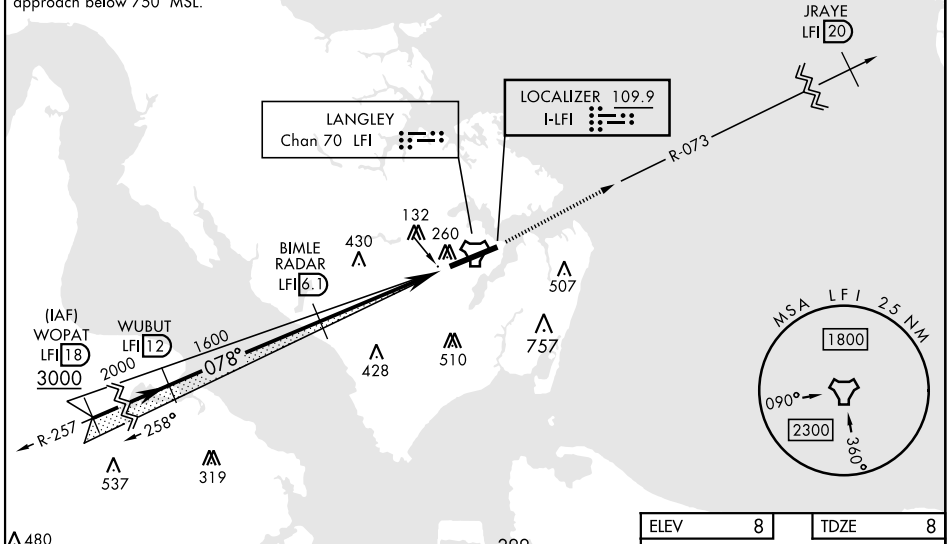
MISSED APPROACH: Climb to 3000 via LFI R-073 to 20 DME (JRAYE), then as instructed by ATC.

ATIS * 270.1	NORFOLK APP CON 125.7 335.625	TOWER * 125.0 253.5	GND CON 121.7 275.8	CLNC DEL 118.85 257.625
------------------------	---	-------------------------------	-------------------------------	-----------------------------------

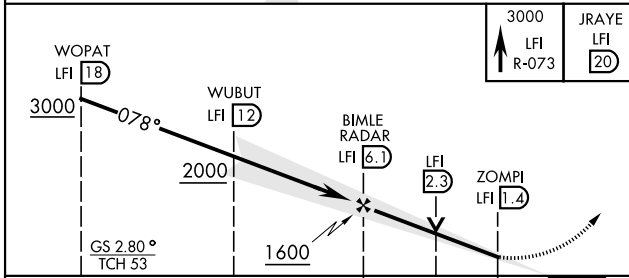
*** Circling not authorized S of Rwy 8-26.

Expect RADAR vectors to IAF or Final Approach course.

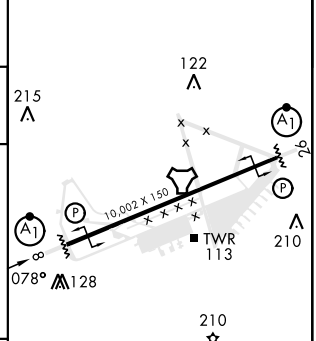
Glideslope unusable for coupled approach below 750' MSL.



EMERG SAFE ALT 100 NM 4100



ELEV 8	TDZE 8
--------	--------



CATEGORY	A	B	C	D	E
S-ILS 8 *	208/24		200	(200-1/2)	
S-LOC 8 **	480/24	472 (500-1/2)	480/50	472 (500-1)	
CIRCLING ***	540-1 532 (600-1)	580-1 572 (600-1)	700-2 692 (700-2)	760-2 1/2 752 (800-2 1/2)	760-2 3/4 752 (800-2 3/4)

HIRL Rwy 8-26

	FAF to MAP 4.7 NM				
Knots	60	90	120	150	180
Min:Sec	4:42	3:08	2:21	1:53	1:34

ILS or LOC Y RWY 8

NE-3, 20 MAR 2025 to 17 APR 2025

NE-3, 20 MAR 2025 to 17 APR 2025