

HAMPTON, VIRGINIA

# TACAN Y RWY 8

TACAN LFI Chan <b>70</b>	APCH CRS <b>073°</b>	Rwy ldg <b>10,002</b> TDZE <b>8</b> Arpt Elev <b>8</b>
--------------------------	----------------------	--

[USAF]

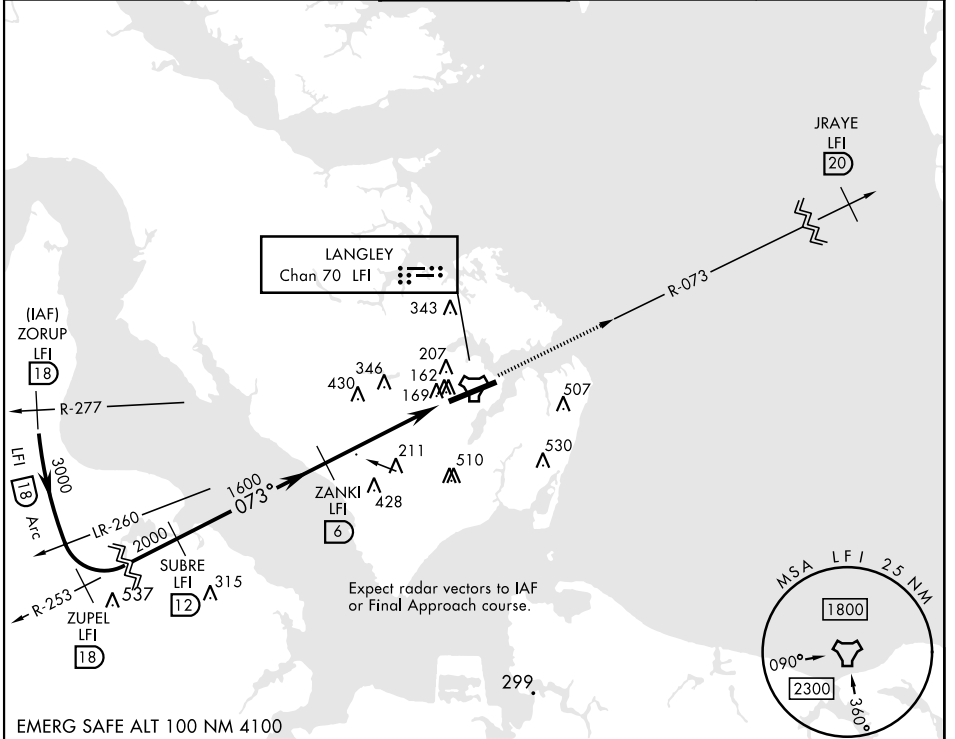
LANGLEY AFB (KLF1)

▼ \*When ALS inop, increase CAT AB RVR to 55 and vis to 1 mile, CAT CDE vis to 1 3/8 miles.  
 \*\*Circling not authorized S of Rwy 8-26.

ALSF-1  

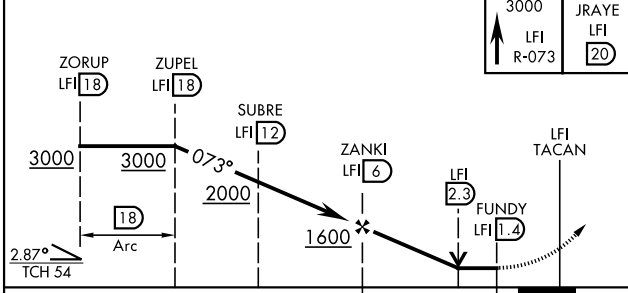
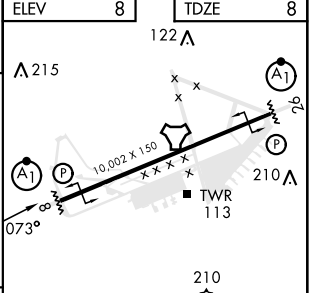

MISSED APPROACH: Climb to 3000 via LFI R-073 to 20 DME (JRAYE), then as instructed by ATC.

ATIS ★ <b>270.1</b>	NORFOLK APP CON <b>125.7 335.625</b>	TOWER ★ <b>125.0 253.5</b>	GND CON <b>121.7 275.8</b>	CLNC DEL <b>118.85 257.625</b>
------------------------	---	-------------------------------	-------------------------------	-----------------------------------



NE-3, 20 MAR 2025 to 17 APR 2025

NE-3, 20 MAR 2025 to 17 APR 2025

		ELEV 8 TDZE 8				
						
CATEGORY	A	B	C	D	E	
S-8*	480/24	472 (500-1/2)	480/50	472	(500-1)	
CIRCLING**	540-1 532 (600-1)	580-1 572 (600-1)	700-2 692 (700-2)	760-2 1/2 752 (800-2 1/2)	760-2 3/4 752 (800-2 3/4)	HIRL Rwy 8-26

HAMPTON, VIRGINIA  
Amdt 6 11AUG22

37°05'N-76°22'W

LANGLEY AFB (KLF1)

# TACAN Y RWY 8