

LOC I-MLB 108.3	APP CRS 094°	Rwy Idg TDZE Apt Elev	10181 32 33
---------------------------	------------------------	-----------------------------	--

ILS or LOC RWY 9R

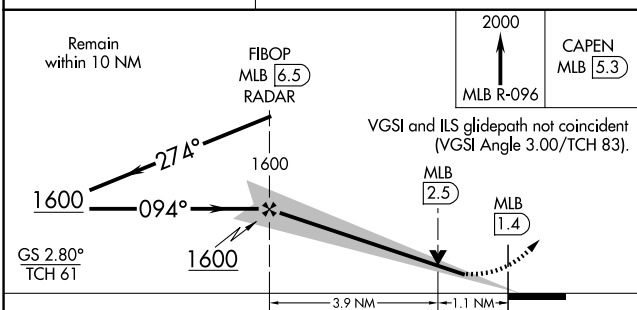
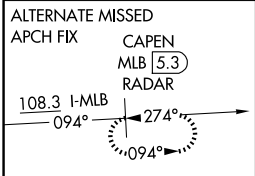
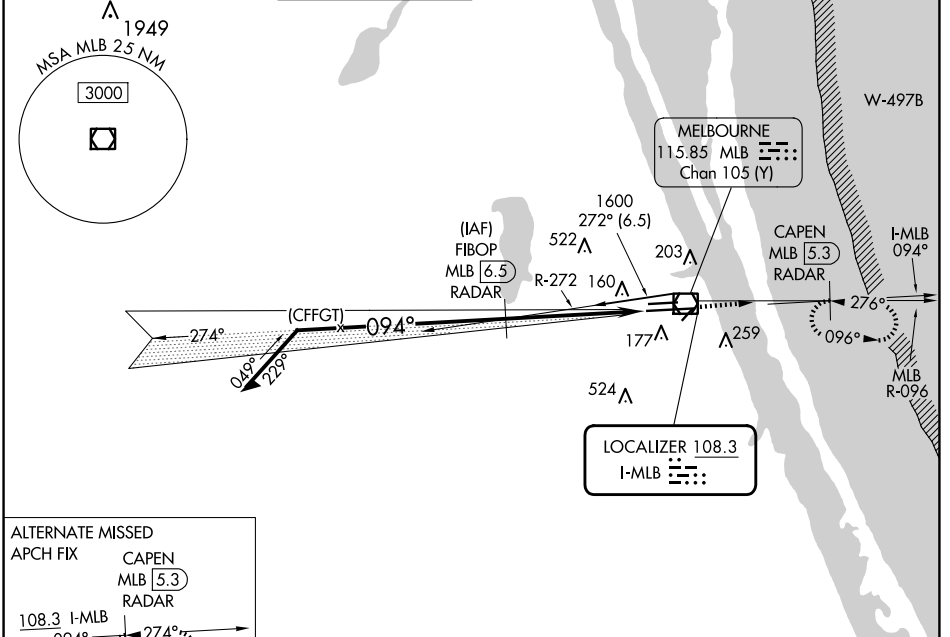
MELBOURNE ORLANDO INTL (MLB)

DME or RADAR required.

MALSR

MISSED APPROACH: Climb to 2000 on MLB VOR/DME R-096 to CAPEN/MLB VOR/DME 5.3 DME/RADAR and hold, continue climb-in-hold 2000.

ATIS 132.55	ORLANDO APP CON 132.65 281.425	MELBOURNE TOWER ★ 118.2 (CTAF) 257.8	GND CON 121.9	CLNC DEL 121.9	CLNC DEL 132.65 (When twr closed)	UNICOM 122.95
-----------------------	--	--	-------------------------	--------------------------	--	-------------------------



ELEV 33	TDZE 32
---------	---------

094°

16

6000 X 150

10181 X 150

27R

27L

121

TWR

AS

REIL Rwy 27L

HIRL Rwy 9R-27L

MIRL Rwy 5-23 and 9L-27R

TDZ/CL Rwy 9R

FAF to MAP 5.1 NM

Knots	60	90	120	150	180
Min:Sec	5:06	3:24	2:33	2:02	1:42

CATEGORY	A	B	C	D
S-ILS 9R	232/18		200 (200-½)	
S-LOC 9R	480/24	448 (500-½)	480/45	448 (500-¾)
CIRCLING	500-1 467 (500-1)	560-1 527 (600-1)	680-1¼ 647 (700-1¼)	880-2¾ 847 (900-2¾)

SE-3, 20 MAR 2025 to 17 APR 2025

SE-3, 20 MAR 2025 to 17 APR 2025