

WAAS CH 65601 W09A	APP CRS 094°	Rwy Idg TDZE Apt Elev	6000 33 33
--	------------------------	-----------------------------	---------------------------------------

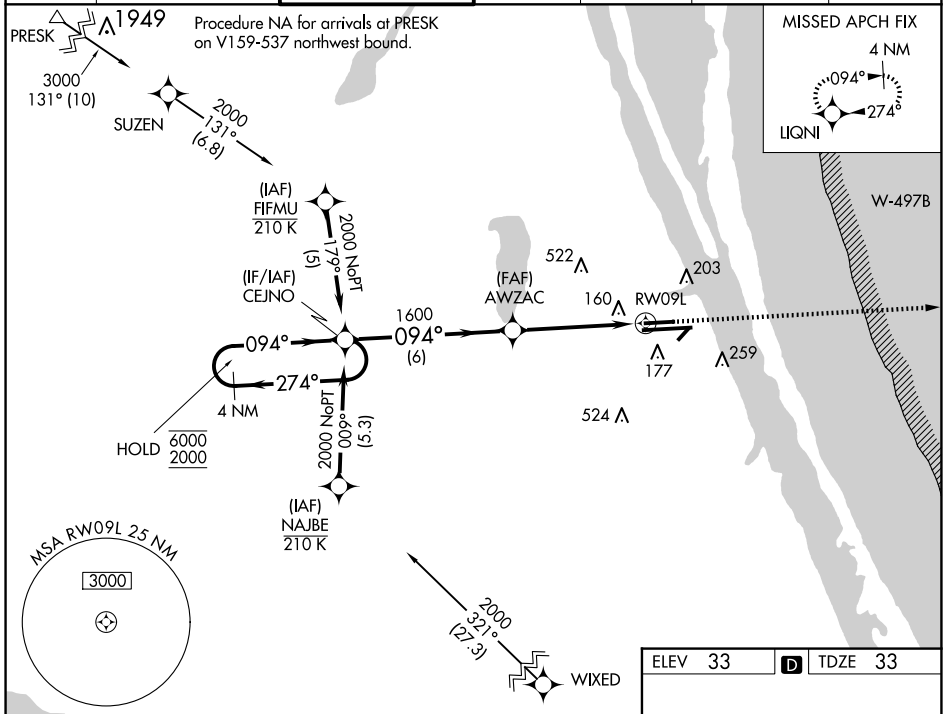
RNAV (GPS) RWY 9L

MELBOURNE ORLANDO INTL (MLB)

RNP APCH - GPS.
 For uncompensated Baro-VNAV systems, LNAV/VNAV NA below 2°C or above 54°C. Rwy 9L helicopter visibility reduction below 3/4 SM NA.

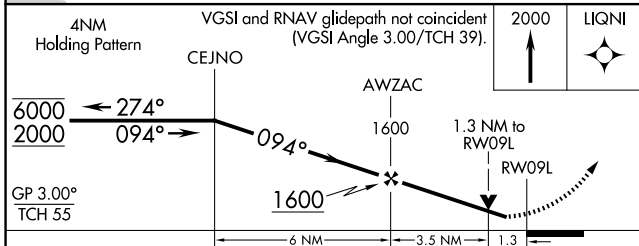
MISSED APPROACH: Climb to 2000 direct LIQNI and hold.

ATIS 132.55	ORLANDO APP CON 132.65 281.425	MELBOURNE TOWER * 118.2 (CTAF) 257.8	GND CON 121.9	CLNC DEL 121.9	CLNC DEL 132.65 (When twr closed)	UNICOM 122.95
-----------------------	--	--	-------------------------	--------------------------	--	-------------------------



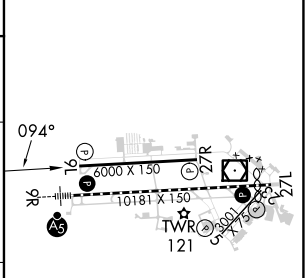
SE-3, 20 MAR 2025 to 17 APR 2025

SE-3, 20 MAR 2025 to 17 APR 2025



ELEV 33	TDZE 33
---------	---------

CATEGORY	A	B	C	D
LPV DA		283-3/4	250 (300-3/4)	
LNAV/VNAV DA		473-1 1/4	440 (500-1 1/4)	
LNAV MDA	480-1	447 (500-1)	480-1 3/8	447 (500-1 3/8)
CIRCLING	500-1 467 (500-1)	560-1 527 (600-1)	680-1 3/4 647 (700-1 3/4)	880-2 3/4 847 (900-2 3/4)



- REIL Rwy 27L
- HIRL Rwy 9R-27L
- MIRL Rwy 5-23 and 9L-27R
- TDZ/CL Rwy 9R