

VOR/DME	MLB	APP CRS	Rwy Idg	10181
115.85		089°	TDZE	32
Chan	105 (Y)		Apt Elev	33

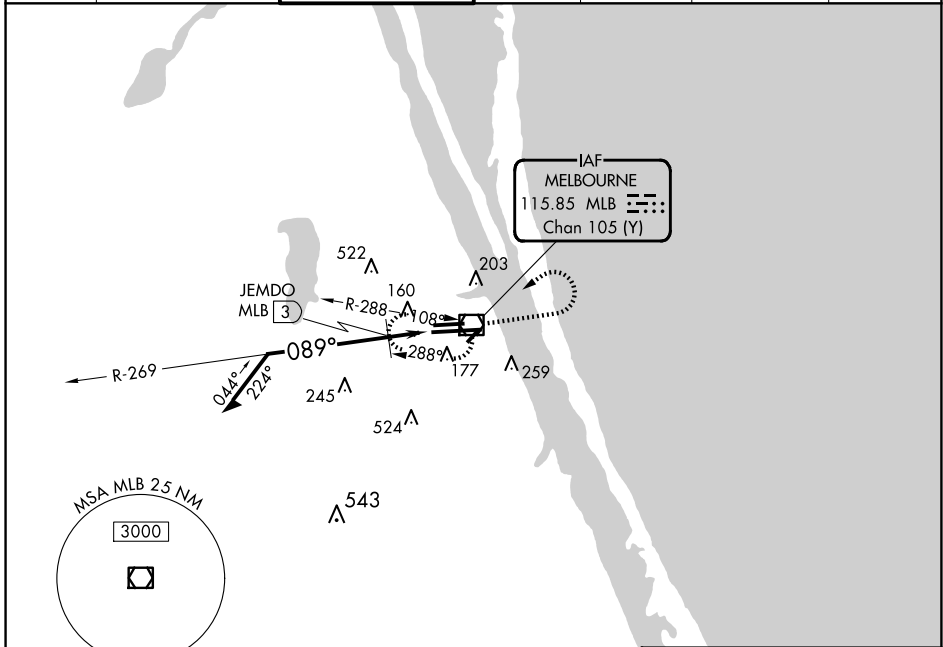
VOR RWY 9R

MELBOURNE ORLANDO INTL (MLB)

▼ JEMDO FIX minimums: For inop MALSRL, **▲** increase S-9R Cats C and D visibility to RVR 6000.

▲ MISSED APPROACH: Climb to 1000, then climbing left turn to 2100 direct MLB VOR/DME and hold, continue climb-in-hold to 2100.

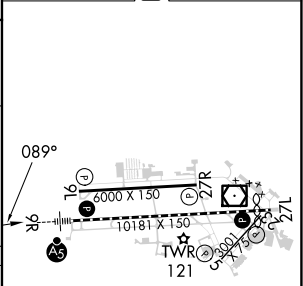
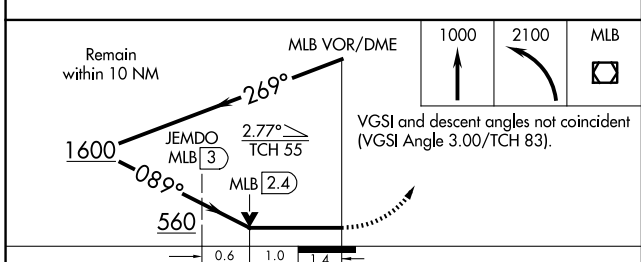
ATIS	ORLANDO APP CON	MELBOURNE TOWER ★	GND CON	CLNC DEL	CLNC DEL	UNICOM
132.55	132.65 281.425	118.2 (CTAF) 257.8	121.9	121.9	132.65 (When twr closed)	122.95



SE-3, 20 MAR 2025 to 17 APR 2025

SE-3, 20 MAR 2025 to 17 APR 2025

ELEV 33	D	TDZE 32
---------	----------	---------



CATEGORY	A	B	C	D
S-9R	560/24	528 (600-½)	560/55	528 (600-1)
C CIRCLING	560-1	527 (600-1)	680-1¾ 647 (700-1¾)	880-2¾ 847 (900-2¾)
JEMDO FIX MINIMUMS				
S-9R	440/24	408 (500-½)	440/40	408 (500-¾)
C CIRCLING	560-1	527 (600-1)	680-1¾ 647 (700-1¾)	880-2¾ 847 (900-2¾)