

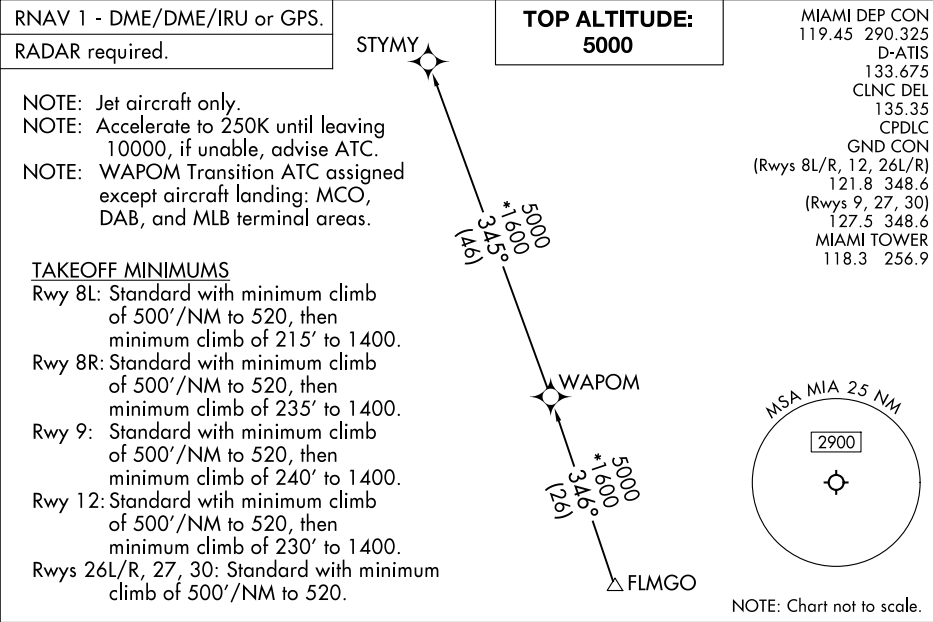
SE-3, 20 MAR 2025 to 17 APR 2025

(FLMGO2.FLMGO) 24081

AL-257 (FAA)

MIAMI INTL (MIA)
MIAMI, FLORIDA

FLMGO TWO DEPARTURE(RNAV) Transition Routes



DEPARTURE ROUTE DESCRIPTION
SEE ADDITIONAL REQUIREMENTS ON AAUP

TAKEOFF RUNWAYS 8L/8R: Climb on heading 092° to 520, then direct CSALT, then on track 007° to DEALZ, then on track 348° to LIIVV, then on track 323° to GEITH, then on track 339° to cross ALNZO at or above 5000, thence. . . .

TAKEOFF RUNWAY 9: Climb on heading 092° to intercept course 082° to CSALT, then on track 007° to DEALZ, then on track 348° to LIIVV, then on track 323° to GEITH, then on track 339° to cross ALNZO at or above 5000, thence. . . .

TAKEOFF RUNWAY 12: Climb on heading 124° to intercept course 078° to CSALT, then on track 007° to DEALZ, then on track 348° to LIIVV, then on track 323° to GEITH, then on track 339° to cross ALNZO at or above 5000, thence. . . .

TAKEOFF RUNWAY 26L: Climb on heading 272° to intercept course 283° to KROCS, then on track 315° to RUSSS, then on track 007° to RMIRO, then on track 353° to cross ALNZO at or above 5000, thence. . . .

TAKEOFF RUNWAY 26R: Climb on heading 272° to intercept course 282° to KROCS, then on track 315° to RUSSS, then on track 007° to RMIRO, then on track 353° to cross ALNZO at or above 5000, thence. . . .

TAKEOFF RUNWAY 27: Climb on heading 272° to intercept course 298° to KROCS, then on track 315° to RUSSS, then on track 007° to RMIRO, then on track 353° to cross ALNZO at or above 5000, thence. . . .

TAKEOFF RUNWAY 30: Climb on heading 304° to 520, then direct WADLE, then on track 352° to RMIRO, then on track 353° to cross ALNZO at or above 5000, thence. . . .

. . . .on track 349° to FLMGO, then on assigned transition. Maintain 5000. Expect filed altitude within 10 minutes after departure.

STYMY TRANSITION (FLMGO2.STYMY)
WAPOM TRANSITION (FLMGO2.WAPOM)

SE-3, 20 MAR 2025 to 17 APR 2025