

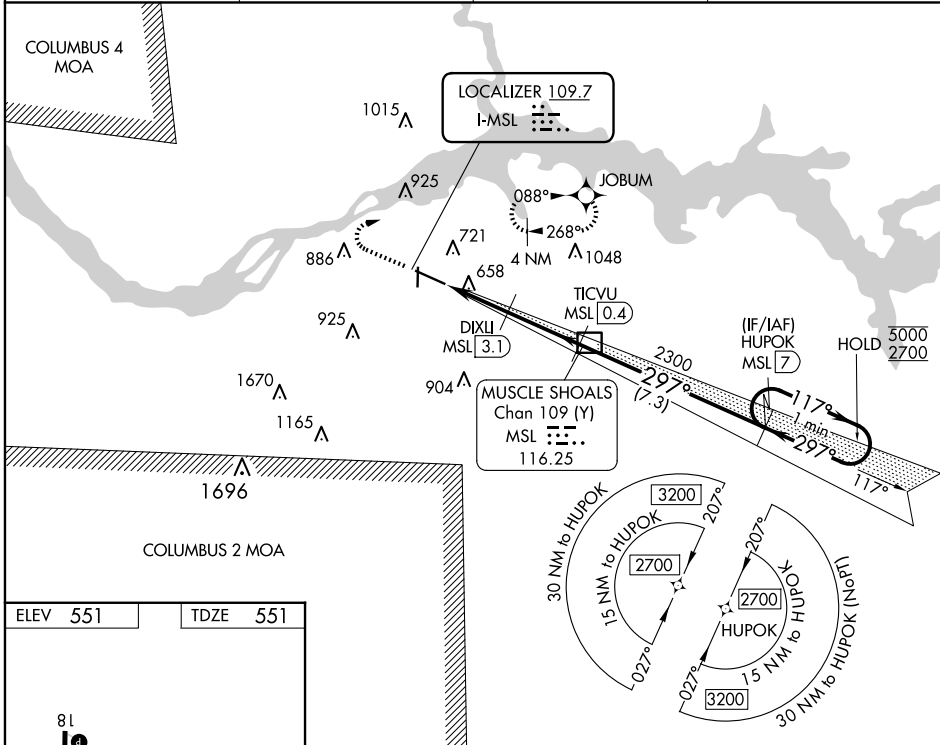
LOC I-MSL 109.7	APP CRS 297°	Rwy Idg TDZE Apt Elev	6694 551 551
---------------------------	------------------------	-----------------------------	---

ILS Y or LOC Y RWY 30

NORTHWEST ALABAMA RGNL (MSL)

RNAV 1 - GPS.		MALSR 	MISSED APPROACH: Climb to 1200 then climbing right turn to 3000 direct JOBUM and hold, continue climb-in-hold to 3000.
DME required.			
DME from MSL DME. Simultaneous reception of I-MSL and MSL DME required. For inop ALS increase S-LOC 30 Cats C/D visibility to 1 SM.			

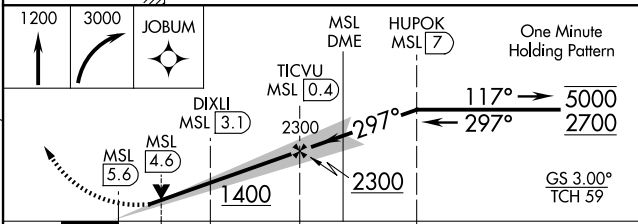
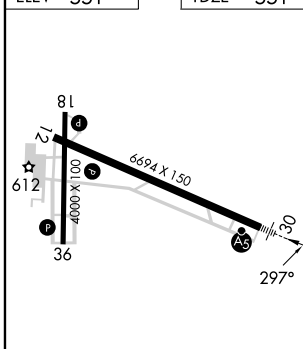
ASOS 119.425	MEMPHIS CENTER 120.8 307.0	GCO 121.725	UNICOM 123.05 (CTAF) 0
------------------------	--------------------------------------	-----------------------	----------------------------------



SE-4, 20 MAR 2025 to 17 APR 2025

SE-4, 20 MAR 2025 to 17 APR 2025

ELEV 551	TDZE 551
----------	----------



1200	3000	JOBUM	MSL DME	HUPOK MSL 7	One Minute Holding Pattern
			TICVU MSL 0.4		
		DIXLI MSL 3.1	2300	297°	117°
		MSL 5.6	MSL 4.6	1400	2300
CATEGORY	A	B	C	D	
S-ILS 30	751-1/2		200 (200-1/2)		
S-LOC 30	920-1/2	369 (400-1/2)	920-5/8	369 (400-5/8)	
CIRCLING	1040-1	489 (500-1)	1280-2 729 (800-2)	1280-2 1/4 729 (800-2 1/4)	

- REIL Rwy 12
- MIRL Rwy 18-36
- HIRL Rwy 12-30