

LOC/DME I-URD 110.5 Chan 42	APP CRS 224°	Rwy Idg TDZE 12 Apt Elev 21	7002
-------------------------------------------------	------------------------	-------------------------------------------------	-------------

ILS RWY 22 (SA CAT I & II) LAGUARDIA (LGA)

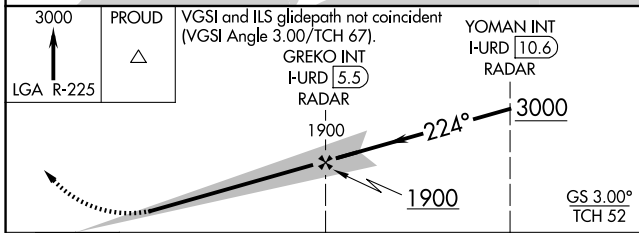
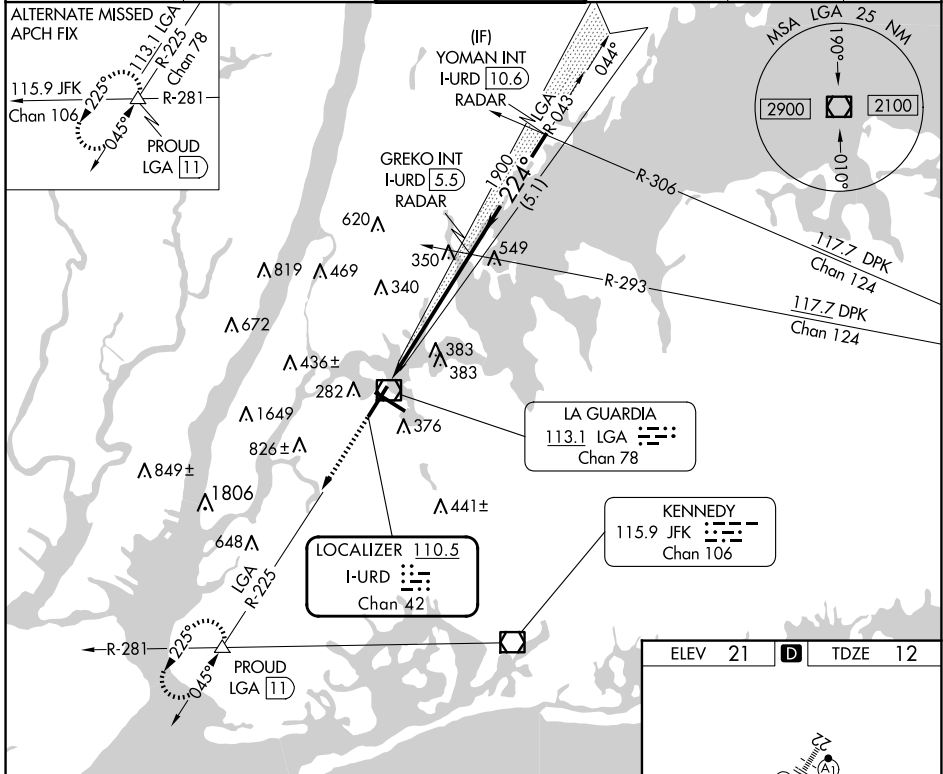
RADAR required for procedure entry.

ALSF-1

MISSED APPROACH: Climb to 3000 on LGA VOR/DME R-225 to PROUD INT/LGA11 DME and hold, continue climb-in-hold to 3000.

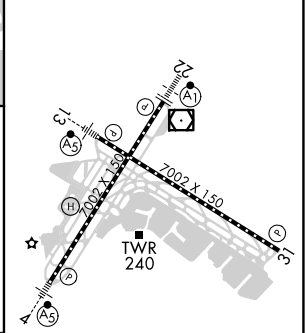
SA CAT I: Requires specific OPSPEC, MSPEC or LOA approval and use of HUD to DH. SA CAT II: Reduced lighting: Requires specific OPSPEC, MSPEC, or LOA approval and use of autoland or HUD to touchdown.

D-ATIS ARR 125.95	NEW YORK APP CON 120.8 263.0	LAGUARDIA TOWER 118.7 263.0	GND CON 121.7 263.0	CLNC DEL 135.2	CPDLC
--------------------------	----------------------------------------	---------------------------------------	-------------------------------	--------------------------	-------



3000	PROUD	VGSi and ILS glidepath not coincident (VGSi Angle 3.00/TCH 67).	YOMAN INT I-URD 10.6 RADAR
LGA R-225	△	GREKO INT I-URD 5.5 RADAR	
		1900	3000
		1900	GS 3.00° TCH 52
		5.7 NM	5.1 NM
CATEGORY	A	B	C
S-ILS 22	SA CAT I RA 162/14	150 DA 162	
S-ILS 22	SA CAT II RA 112/12	100 DA 112	

ELEV 21	D	TDZE 12
---------	----------	---------



TDZ/CL Rws 4, 13 and 22
HIRL Rws 4-22 and 13-31
REIL Rwy 31

SA CATEGORY I & II ILS - SPECIAL AIRCREW & AIRCRAFT CERTIFICATION REQUIRED

NE-2, 20 MAR 2025 to 17 APR 2025

NE-2, 20 MAR 2025 to 17 APR 2025