

RNAV (GPS) X RWY 31 LAGUARDIA (LGA)

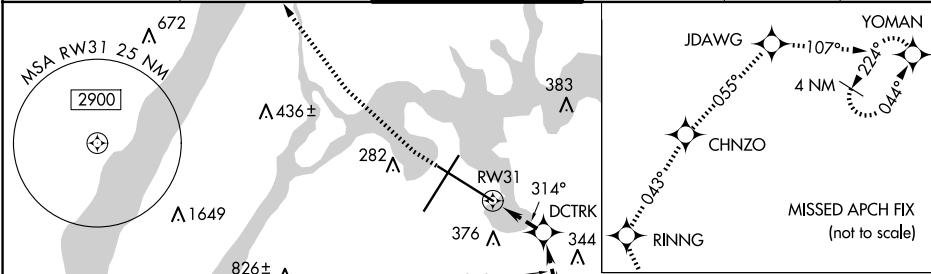
APP CRS	Rwy Idg	7002
314°	TDZE	7
	Apt Elev	21

RNP APCH - GPS.
RADAR required.

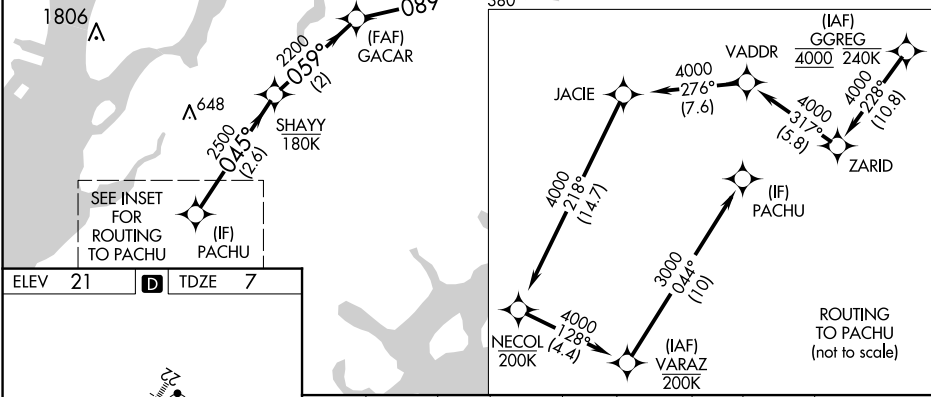
⚠ Rwy 31 helicopter visibility reduction below 3/4 SM NA.

MISSED APPROACH: (Do not exceed 165K until Rwy 31 and do not exceed 210K until YOMAN) Climbing right turn to 3000 direct RINNG and on track 043° to CHNZO and on track 055° to JDAWG and on track 107° to YOMAN and hold.

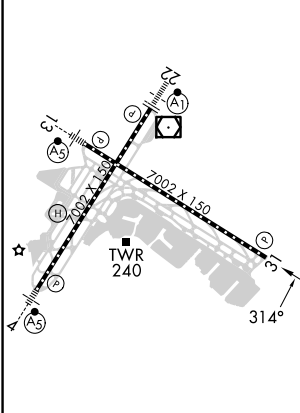
D-ATIS ARR	125.95	NEW YORK APP CON	120.8 263.0	LAGUARDIA TOWER	118.7 263.0	GND CON	121.7 263.0	CLNC DEL	135.2	CPDLC
D-ATIS DEP	127.05									



Cross DRRYL, fly visual to airport along depicted track 044° to KEYTH then 359° to DCTRK, then 314° to Rwy 31.

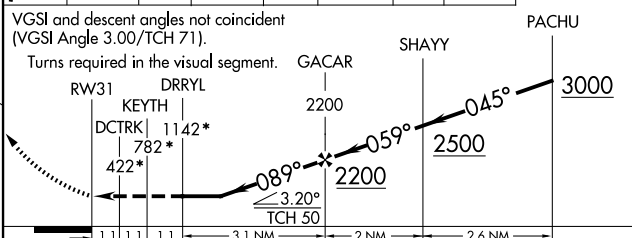


ELEV	21	D	TDZE	7
------	-----------	----------	------	----------



TDZ/CL Rws 4, 13 and 22
HIRL Rws 4-22 and 13-31
REIL Rwy 31

3000	RINNG	CHNZO	JDAWG	YOMAN	* Check ALT.
	tr 043°		tr 055°	tr 107°	



CATEGORY	A	B	C	D
LNAV MDA	1160-4 1153 (1200-4)			

NE-2, 20 MAR 2025 to 17 APR 2025

NE-2, 20 MAR 2025 to 17 APR 2025