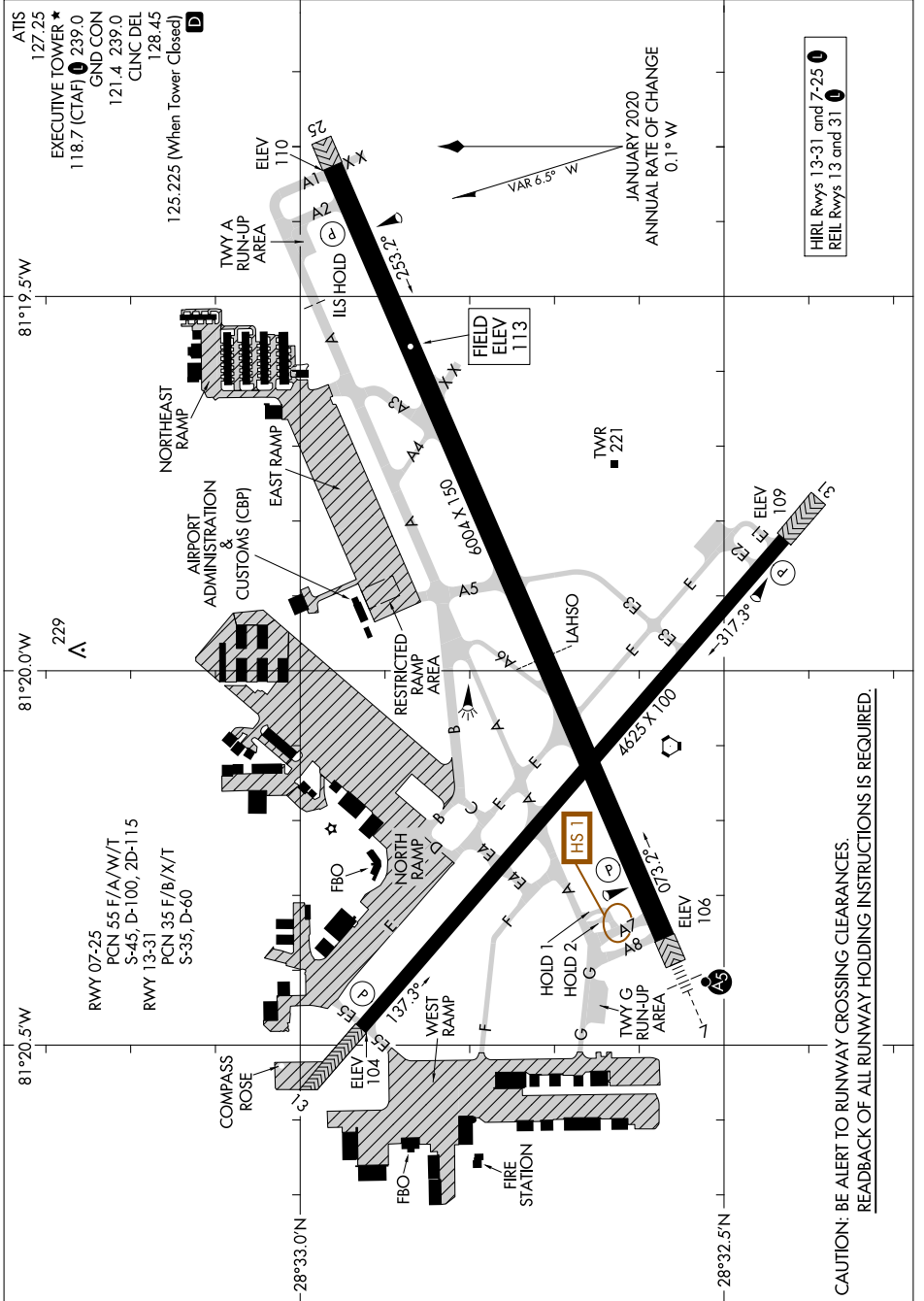


# AIRPORT DIAGRAM

AL-305 (FAA)

EXEC (O.R.L.)  
ORLANDO, FLORIDA



SE-3, 20 MAR 2025 to 17 APR 2025

SE-3, 20 MAR 2025 to 17 APR 2025

HIRL Rwy 13-31 and 7-25	1
REIL Rwy 13 and 31	1

JANUARY 2020  
ANNUAL RATE OF CHANGE  
0.1° W

VAR 6.5° W

**CAUTION: BE ALERT TO RUNWAY CROSSING CLEARANCES.  
READBACK OF ALL RUNWAY HOLDING INSTRUCTIONS IS REQUIRED.**

# AIRPORT DIAGRAM

ORLANDO, FLORIDA  
EXEC (O.R.L.)