

PALMDALE, CALIFORNIA

# HI-TACAN RWY 25

TACAN PMD Chan <b>102 (Y)</b>	APCH CRS <b>265°</b>	Rwy Idg <b>12,002</b> TDZE <b>2503</b> Arprt Elev <b>2543</b>
----------------------------------	-------------------------	---------------------------------------------------------------------

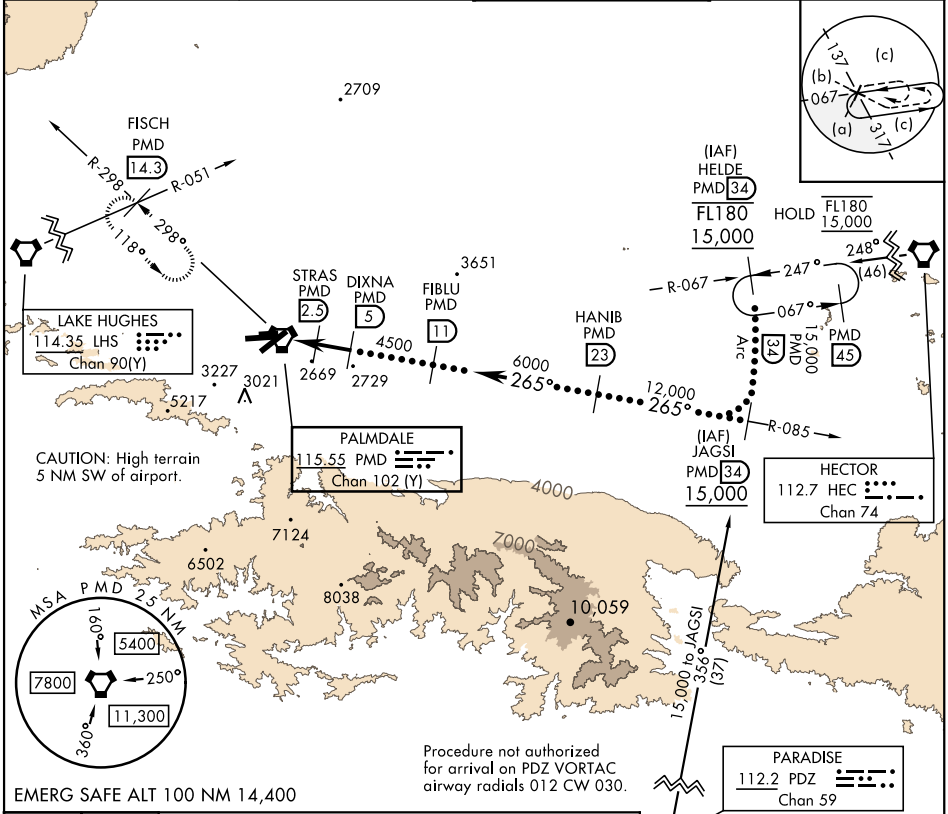
AL-310 [USAF]

PALMDALE USAF PLANT 42 (KPMDD)

**V** \* Circling NA S of Rwy 4 and 25.  
**A**

**MISSED APPROACH:** Climb to 3000 then climbing right turn to 6700 on heading 318° on PMD VORTAC R-298 to FISCH INT/PMD 14.3 DME/RADAR and hold, continue climb-in-hold to 6700.

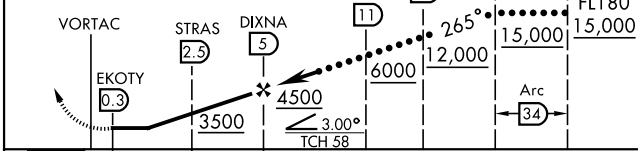
ATIS <b>118.275</b>	JOSHUA APP CON <b>124.55 363.0</b>	TOWER★ <b>123.7 (CTAF) 0 317.6</b>	GND CON <b>121.9 317.6</b>
------------------------	---------------------------------------	---------------------------------------	-------------------------------



SW-3, 20 MAR 2025 to 17 APR 2025

SW-3, 20 MAR 2025 to 17 APR 2025

3000	6700	VGSI and descent angles not coincident.
↑	Hdg 318°	



CATEGORY	C	D	E
S-25	2840-1	337 (400-1)	
CIRCLING*	3140-1½ 597 (600-1½)	3740-3 1197 (1200-3)	3760-3 1217 (1300-3)

ELEV 2543	TDZE 2503
-----------	-----------

Diagram of the assault strip showing dimensions (12,002 x 200) and angles (0.3% UP, 0.4% UP, 252°, 265°).

HIRL Rwy 4-22, 7-25	0
REIL Rwy 4, 22, 7, 25	0

PALMDALE, CALIFORNIA

34° 38' N-118° 05' W

PALMDALE USAF PLANT 42 (KPMDD)

Amdt 3 15JUN23

# HI-TACAN RWY 25