

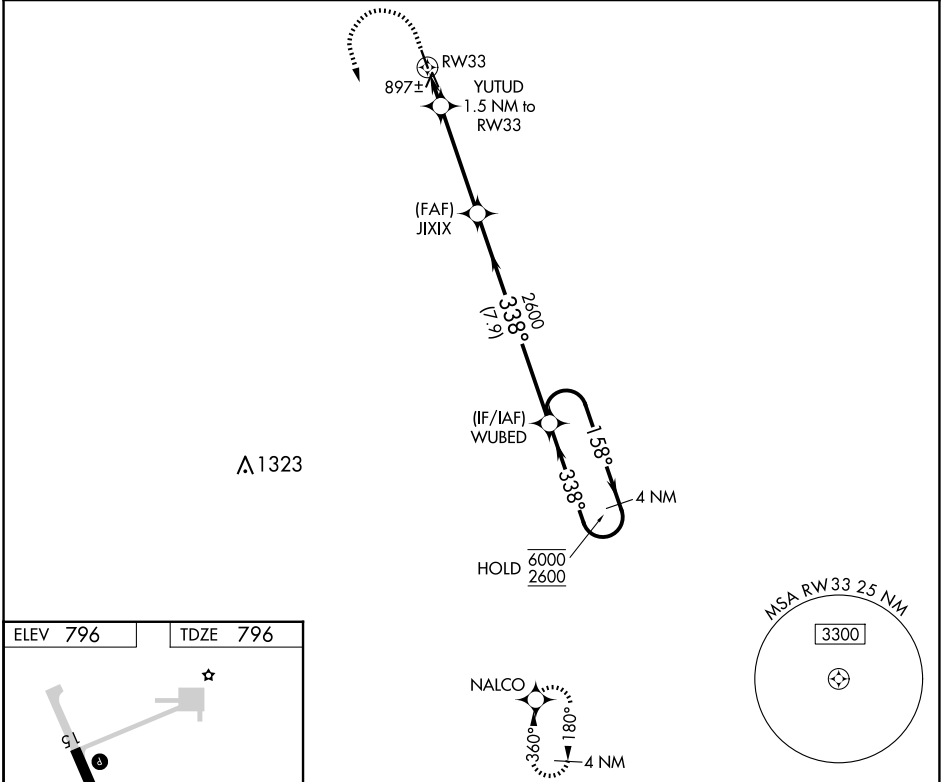
| | | |
|-------------|----------|-------------|
| APP CRS | Rwy Idg | 3798 |
| 338° | TDZE | 796 |
| | Apt Elev | 796 |

RNAV (GPS) RWY 33

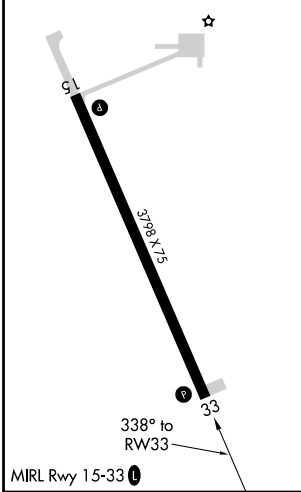
PEMBINA MUNI (PMB)

| | | |
|---------------|--|--|
| RNP APCH-GPS. | | MISSED APPROACH: Climb to 1200 then climbing left turn 2600 direct NALCO and hold. |
| ⚠ NA | Circling Rwy 15 NA at night. Obtain local altimeter setting on CTAF; when not received, use Hallock altimeter setting and increase all MDA 60 feet and LNAV Cat C visibility ¼ SM. | |

| | |
|---|---------------------------------|
| MINNEAPOLIS CENTER 132.15 269.6 | UNICOM 122.8 (CTAF) 0 |
|---|---------------------------------|



| | |
|----------|----------|
| ELEV 796 | TDZE 796 |
|----------|----------|



| | | | |
|----------------------|-----------------------|-----------------------|--|
| 1200 | 2600 | NALCO | VGSI and descent angles not coincident (VGSI Angle 3.00/TCH 26). |
| | | | |
| YUTUD 1.5 NM to RW33 | | JIXIX | WUBED 4 NM Holding Pattern |
| RW33 | | 2600 | 6000 |
| 1320 | | 338° | 158° |
| 1.5 | | 4.1 NM | 7.9 NM |
| CATEGORY | A | B | C |
| LNAV MDA | 1160-1 364 (400-1) | | |
| C CIRCLING | 1200-1 404 (500-1) | 1260-1 464 (500-1) | 1260-1½ 464 (500-1½) |
| | NA | | |

NC-1, 20 MAR 2025 to 17 APR 2025

NC-1, 20 MAR 2025 to 17 APR 2025