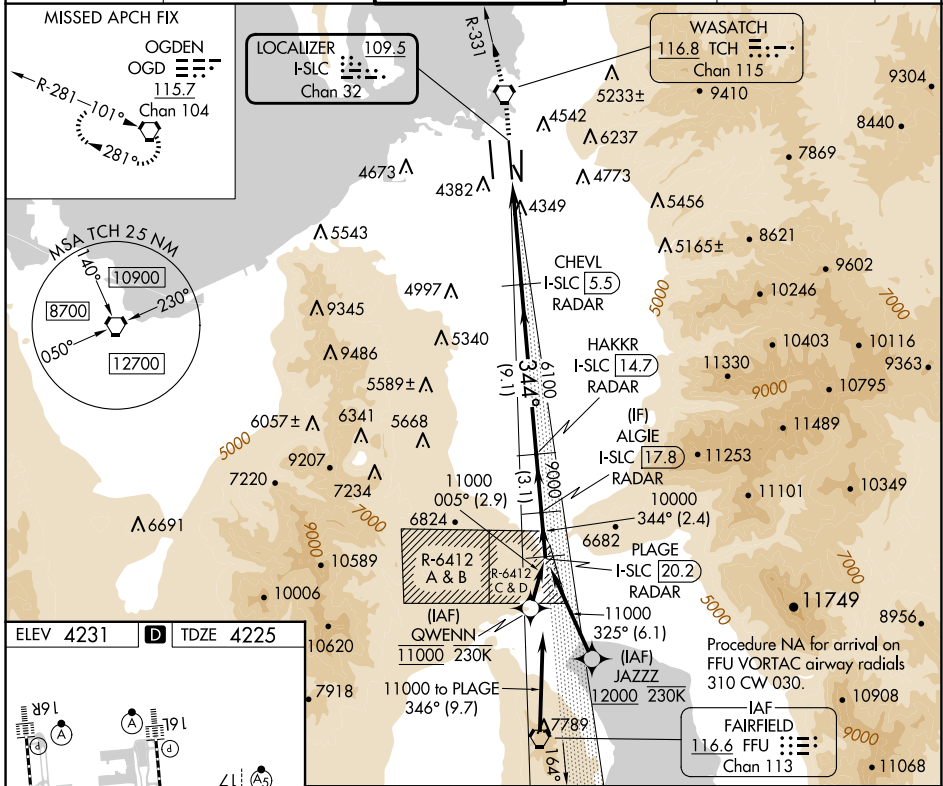


LOC/DME I-SLC 109.5 Chan 32	APP CRS 344°	Rwy Idg TDZE Apt Elev	12002 4225 4231
--	------------------------	-----------------------------	--

ILS RWY 34R (SA CAT I)

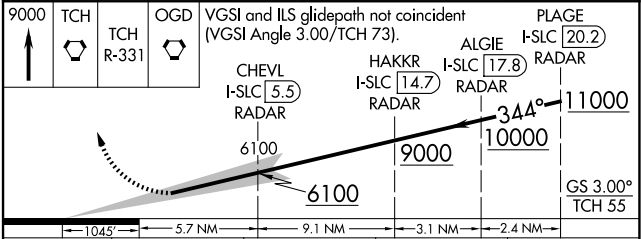
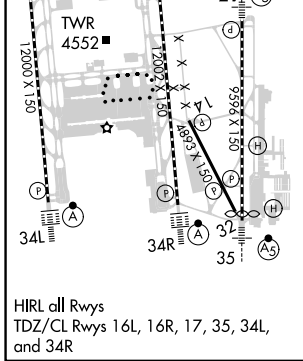
SALT LAKE CITY INTL (SLC)

RNP APCH - GPS. From QWENN or JAZZZ.		ALSF-2 	MISSED APPROACH: Climb to 9000 direct TCH VORTAC and on TCH VORTAC R-331 to OGD VORTAC and hold.		
DME or RADAR required.					
<p>Simultaneous approach authorized. Requires specific OPSPEC, MSPEC, or LOA approval.</p>					
D-ATIS 124.75 125.625	SALT LAKE CITY APP CON 125.7 284.6	SALT LAKE CITY TOWER 119.05 257.8	GND CON 123.775 348.6	CLNC DEL 127.3 379.975	CPDLC



SW-4, 20 MAR 2025 to 17 APR 2025

SW-4, 20 MAR 2025 to 17 APR 2025



CATEGORY	A	B	C	D
S-ILS 34R	RA 149/14 150 DA 4375			

SA CATEGORY I ILS - SPECIAL AIRCREW & AIRCRAFT CERTIFICATION REQUIRED