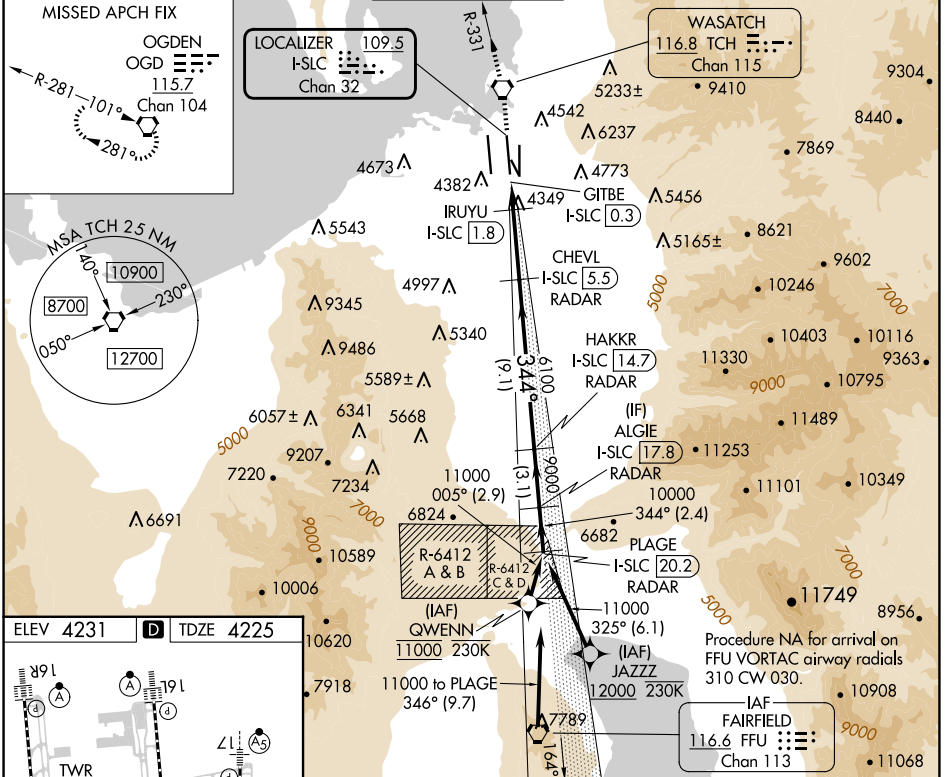


LOC/DME I-SLC	APP CRS	Rwy Idg	12002
109.5	344°	TDZE	4225
Chan 32		Apt Elev	4231

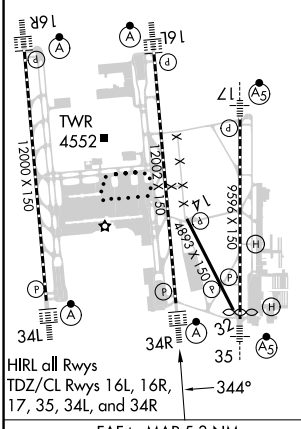
ILS or LOC RWY 34R

SALT LAKE CITY INTL (SLC)

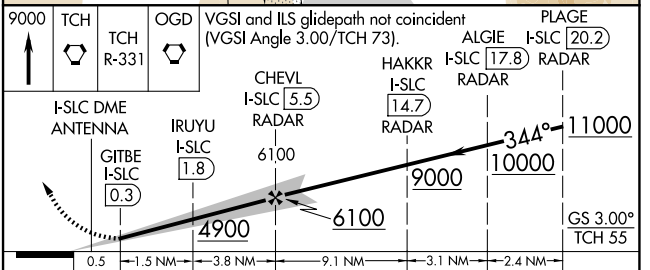
RNP APCH - GPS. From QWENN or JAZZZ.		ALSF-2 (A)	MISSED APPROACH: Climb to 9000 direct TCH VORTAC and on TCH VORTAC R-331 to OGD VORTAC and hold.		
DME required for LOC only. DME or RADAR required.					
<p>Simultaneous approach authorized. For inop ALS, increase S-LOC 34R Cat C/D visibility to RVR 5500.</p>					
D-ATIS	SALT LAKE CITY APP CON	SALT LAKE CITY TOWER	GND CON	CLNC DEL	CPDLC
124.75 125.625	125.7 284.6	119.05 257.8	123.775 348.6	127.3 379.975	



ELEV 4231	D	TDZE 4225
-----------	---	-----------



FAF to MAP 5.3 NM					
Knots	60	90	120	150	180
Min:Sec	5:18	3:32	2:39	2:07	1:46



CATEGORY	A	B	C	D
S-ILS 34R	4425/18 200 (200-1/2)			
S-LOC 34R	4600/24	375 (400-1/2)	4600/35	375 (400-3/8)

SW-4, 20 MAR 2025 to 17 APR 2025

SW-4, 20 MAR 2025 to 17 APR 2025