

SALT LAKE CITY, UTAH

AL-365 (FAA)

25079

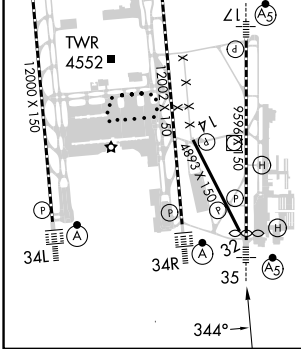
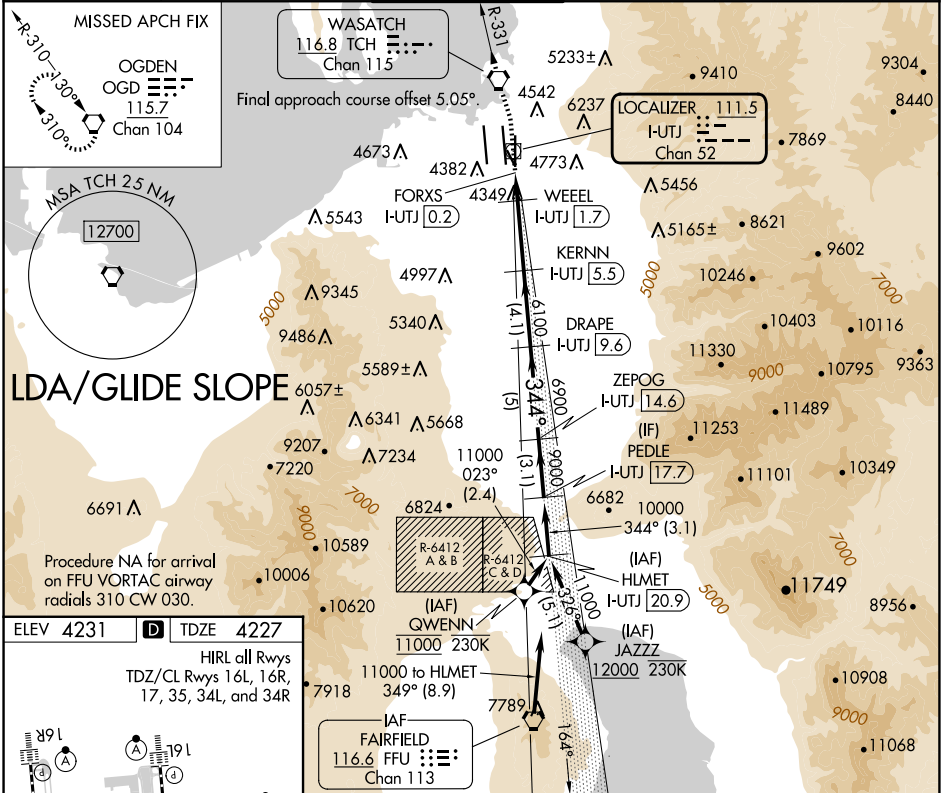
| | | | |
|----------------|-------------|----------|-------------|
| LOC/DME I-UTJ | APP CRS | Rwy Idg | 9272 |
| 111.5 | 344° | TDZE | 4227 |
| Chan 52 | | Apt Elev | 4231 |

LDA RWY 35

SALT LAKE CITY INTL (SLC)

| | | | |
|---|--|-------|--|
| RNP APCH - GPS. From QWENN or JAZZZ. | | MALSR | MISSED APPROACH: Climb to 4800 then climbing left turn to 9000 direct TCH VORTAC and on TCH VORTAC R-331 to OGD VORTAC and hold. |
| DME required. | | | |
| <p>Simultaneous approach authorized. For inop ALS, increase S-LDA/GS 35 all Cats visibility to RVR 4000, increase S-LDA 35 Cat E visibility to 1 1/4 SM. Cat E restricted to USAF/USN aircraft.</p> | | | |

| | | | | | |
|-----------------------|------------------------|----------------------|--------------------|----------------------|-------|
| D-ATIS | SALT LAKE CITY APP CON | SALT LAKE CITY TOWER | GND CON | CLNC DEL | CPDLC |
| 124.75 125.625 | 125.7 284.6 | 118.3 257.8 | 121.9 348.6 | 127.3 379.975 | |



| | | | | | |
|-------------|---|-------------------|-----------------|-----------------|---|
| 4800 | 9000 | TCH | TCH R-331 | OGD | VGSi and LDA glidepath not coincident (VGSi Angle 3.00/TCH 74). |
| | | I-UTJ DME ANTENNA | WHEEL I-UTJ 1.7 | KERNN I-UTJ 5.5 | DRAPE I-UTJ 9.6 |
| | | FORXS I-UTJ 0.2 | | 6100 | 344° 10000 |
| | | 4900 | | 6100 | 9000 |
| | | 0.4 | 0.7 | 0.8 | -3.8 NM |
| | | | | | -4.1 NM |
| | | | | | -5 NM |
| | | | | | -3.1 NM |
| CATEGORY | A B C D E | | | | |
| S-LDA/GS 35 | 4477/24 250 (300-1/2) | | | | |
| S-LDA 35 | 4660/24 433 (500-1/2) 4660/40 433 (500-3/4) | | | | |

SW-4, 20 MAR 2025 to 17 APR 2025

SW-4, 20 MAR 2025 to 17 APR 2025

SALT LAKE CITY, UTAH
Amdt 1A 20MAR25

40°47'N-111°59'W

SALT LAKE CITY INTL (SLC)
LDA RWY 35