

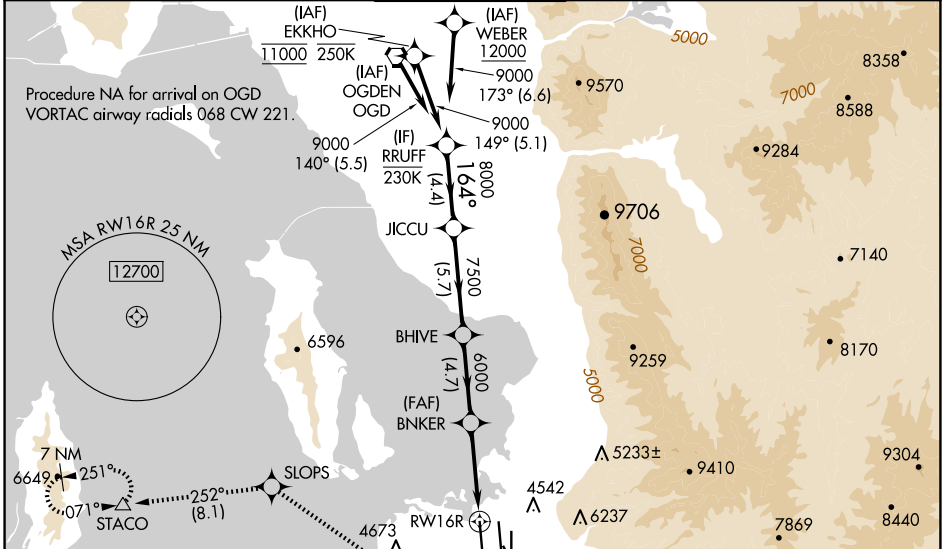
WAAS CH 42746 W16A	APP CRS 164°	Rwy Idg TDZE Apt Elev	12000 4226 4231
--	------------------------	-----------------------------	--

RNAV (GPS) Y RWY 16R

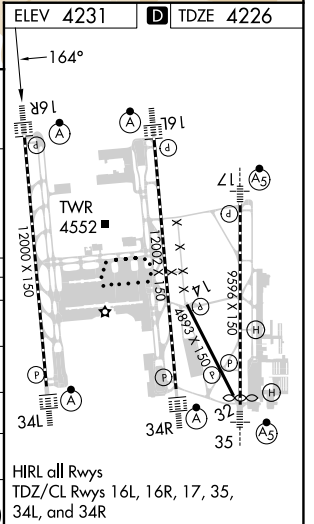
SALT LAKE CITY INTL (SLC)

<p>RNP APCH - GPS.</p> <p>⚠ Simultaneous approach authorized. LNAV procedure NA during simultaneous operations. Use of FD or AP required during simultaneous operations. For uncompensated Baro-VNAV systems, LNAV/VNAV NA below -10°C or above 50°C. For inop ALS, increase LPV* Cat E visibility to RVR 4000, increase LPV Cat E visibility to RVR 4500, increase LNAV/VNAV Cat E visibility to RVR 6000, increase LNAV# Cat E visibility to 1 3/8 SM, increase LNAV Cats C/D visibility to 1 3/8 SM, and increase LNAV Cat E visibility to 2 1/2 SM. Cat E restricted to USAF/USN aircraft.</p>	<p>ALSF-2</p>	<p>MISSED APPROACH: Climb to 4700 then climbing right turn to 8900 direct SLOPS and on track 252° to STACO and hold, continue climb-in-hold.</p> <p>*Missed approach requires minimum climb of 225 feet per NM to 6400 for Cat E aircraft. #Missed approach requires minimum climb of 210 feet per NM to 6200 for Cat E aircraft.</p>
	<p>CPDLC</p>	

D-ATIS 124.75	SALT LAKE CITY APP CON 125.625	SALT LAKE CITY TOWER 125.7 284.6	GND CON 123.775 348.6	CLNC DEL 127.3 379.975	CPDLC
-------------------------	--	--	---------------------------------	----------------------------------	-------



<p>VGSI and RNAV glidepath not coincident (VGSI Angle 3.00/TCH 73).</p> <p>RRUFF</p>					4700	8900	SLOPS	STACO
<p>JICCU</p>					↑	↷	✦	△
<p>BHIVE</p>					↑	↷	✦	△
<p>BNKER</p>					↑	↷	✦	△
<p>GP 3.00° TCH 54</p>					9000	8000	7500	6000
<p>164°</p>					4.4 NM	5.7 NM	4.7 NM	4 NM
<p>1.4 NM to RWY 16R</p>								
CATEGORY	A	B	C	D	E			
LPV DA*	NA				4426/18	200 (200-1/2)		
LPV DA	4426/18				200 (200-1/2)	4489/20		
LPV DA	4426/18				200 (200-1/2)	263 (300-1/2)		
LNAV/VNAV DA	4620/35				394 (400-5/8)			
LNAV MDA#	NA				4740/55	514 (600-1)		
LNAV MDA	4740/24	514 (600-1/2)	4740/55	514 (600-1)	5000-1 3/4	774 (800-1 3/4)		



SW-4, 20 MAR 2025 to 17 APR 2025

SW-4, 20 MAR 2025 to 17 APR 2025