

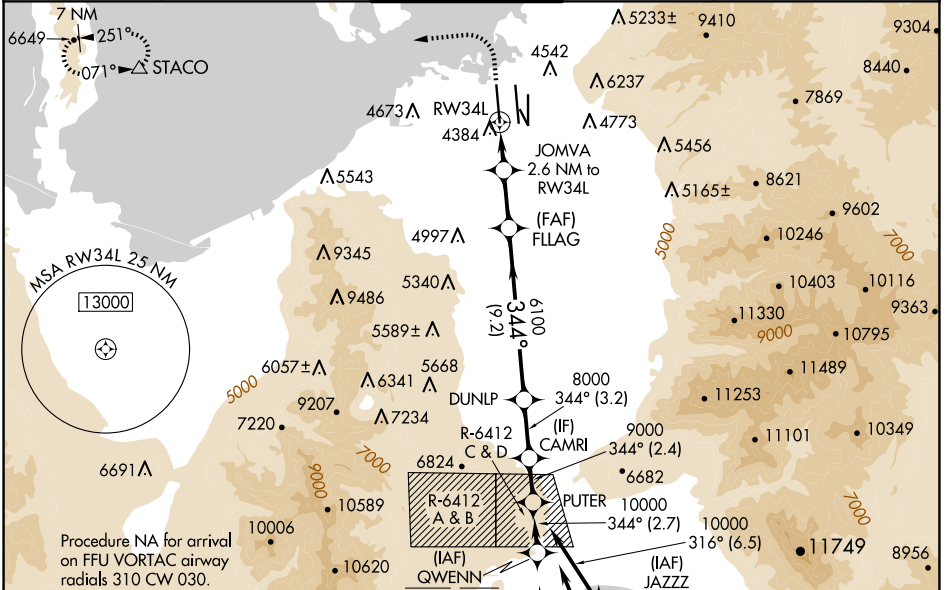
WAAS CH <b>70432</b> <b>W34B</b>	APP CRS <b>344°</b>	Rwy Idg <b>12000</b> TDZE <b>4229</b> Apt Elev <b>4231</b>
--	------------------------	--

# RNAV (GPS) Y RWY 34L

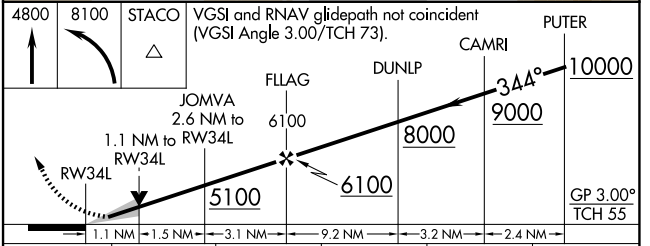
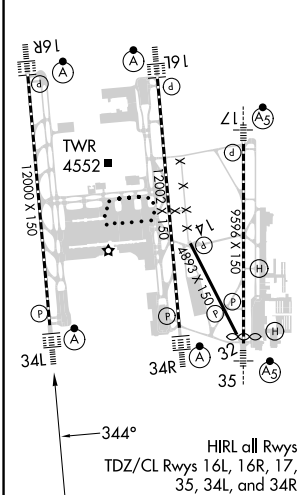
SALT LAKE CITY INTL (SLC)

RNP APCH - GPS.	ALSFX-2	MISSED APPROACH: Climb to 4800 then climbing left turn to 8100 direct STACO and hold.
<p>Simultaneous approach authorized. LNAV procedure NA during simultaneous operations. Use of FD or AP providing RNAV track guidance required during simultaneous operations. For uncompensated Baro-VNAV systems, LNAV/VNAV NA below -10°C or above 49°C. For inop ALS, increase LPV Cat E visibility to RVR 4000, LNAV/VNAV all Cats visibility to RVR 6000, LNAV Cat E visibility to 1/4 SM. Cat E restricted to USAF/USN aircraft.</p>		

D-ATIS <b>124.75 125.625</b>	SALT LAKE CITY APP CON <b>125.7 284.6</b>	SALT LAKE CITY TOWER <b>132.65 336.4</b>	GND CON <b>123.775 348.6</b>	CLNC DEL <b>127.3 379.975</b>	CPDLC
---------------------------------	--	---	---------------------------------	----------------------------------	-------



ELEV 4231	<b>D</b>	TDZE 4229
-----------	----------	-----------



CATEGORY	A	B	C	D	E
LPV DA		4429/18	200 (200-1/2)		
LNAV/VNAV DA		4640/40	411 (500-3/4)		
LNAV MDA	4660/24	431 (500-1/2)		4660/40	431 (500-3/4)

SW-4, 20 MAR 2025 to 17 APR 2025

SW-4, 20 MAR 2025 to 17 APR 2025