

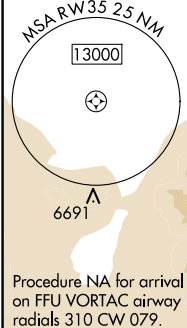
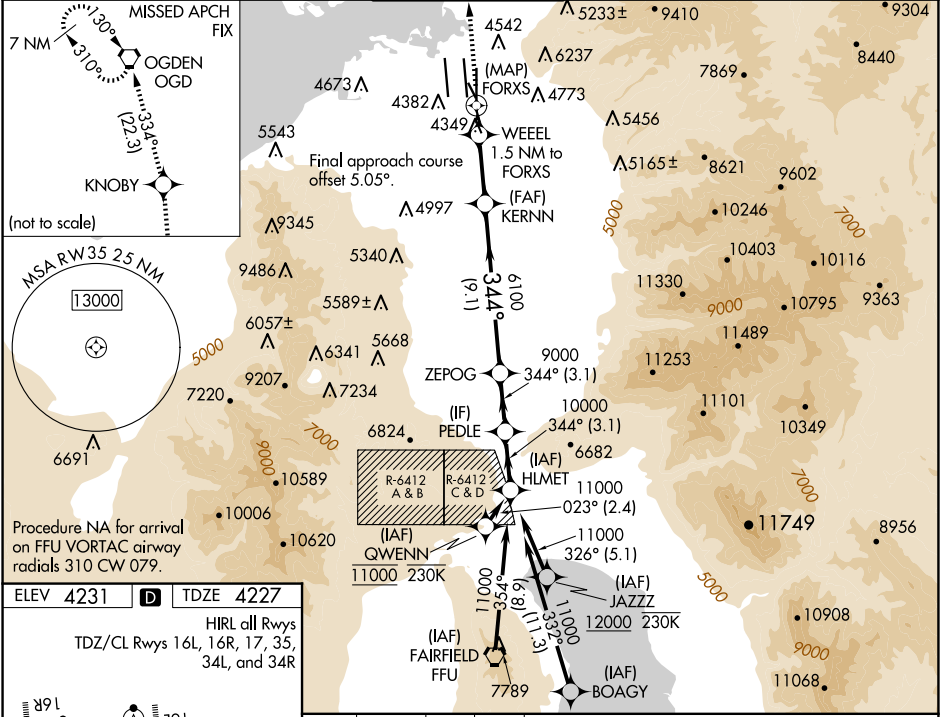
WAAS CH 42843 W35A	APP CRS 344°	Rwy Idg TDZE Apt Elev	9272 4227 4231
----------------------------------------	------------------------	-----------------------------	-------------------------------------------

RNAV (GPS) Y RWY 35

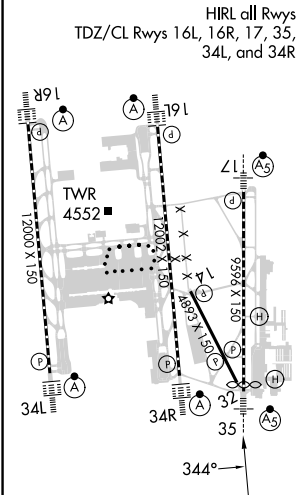
SALT LAKE CITY INTL (SLC)

RNP APCH - GPS.	MALSRL	MISSED APPROACH: Climb to 9000 direct KNOBY and on track 334° to OGD VORTAC and hold.
<p>Simultaneous approach authorized. LNAV procedure NA during simultaneous operations. For uncompensated Baro-VNAV systems, LNAV/VNAV NA below -23°C or above 49°C. Use of FD or AP required during simultaneous operations. For inop ALS, increase LPV Cat E visibility to RVR 4000, increase LNAV/VNAV all Cats visibility to RVR 4500, and increase LNAV Cats C/D/E visibility to RVR 5500.</p>		

D-ATIS 124.75 125.625	SALT LAKE CITY APP CON 125.7 284.6	SALT LAKE CITY TOWER 118.3 257.8	GND CON 121.9 348.6	CLNC DEL 127.3 379.975	CPDLC
---------------------------------	----------------------------------------------	--------------------------------------------	-------------------------------	----------------------------------	-------



ELEV 4231	D	TDZE 4227
------------------	----------	------------------



9000	KNOBY	OGD	VGSIs and RNAV glidepath not coincident (VGSi Angle 3.00/TCH 74).				
	↑	tr 334°		PEDLE	HLMET		
			0.5 NM to FORXS	WEEL 1.5 NM to FORXS	KERNN 6100	ZEPOG 9000	
			FORXS 4900			11000	
						GP 3.00° TCH 55	
			0.4	0.5	1.1 NM	3.8 NM	9.1 NM
CATEGORY	A		B		C	D	E
LPV DA	4478/24 251 (300-½)						
LNAV/VNAV DA	4500/24 273 (300-½)			4507/24 280 (300-½)		4547/24 320 (400-½)	
LNAV MDA	4600/24 373 (400-½)		4600/40 373 (400-¾)				

SW-4, 20 MAR 2025 to 17 APR 2025

SW-4, 20 MAR 2025 to 17 APR 2025