

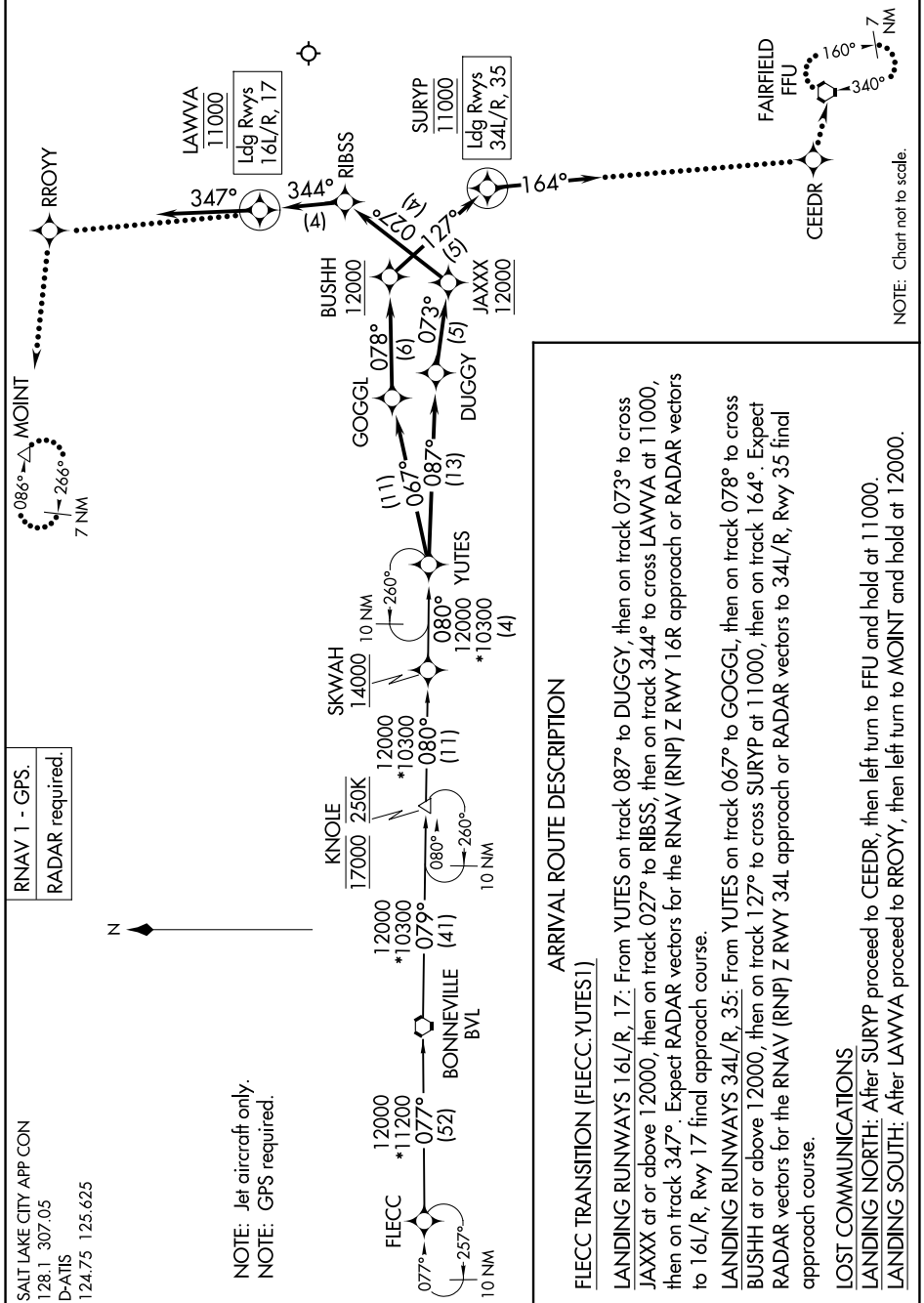
SW-4, 20 MAR 2025 to 17 APR 2025

SALT LAKE CITY APP CON  
128.1 307.05  
D-ATIS  
124.75 125.625

RNAV 1 - GPS.  
RADAR required.



NOTE: Jet aircraft only.  
NOTE: GPS required.



NOTE: Chart not to scale.

ARRIVAL ROUTE DESCRIPTION

FLECC TRANSITION (FLECC.YUTES1)

LANDING RUNWAYS 16L/R, 17: From YUTES on track 087° to DUGGY, then on track 073° to cross JAXXX at or above 12000, then on track 027° to RIBSS, then on track 344° to cross LAWVA at 11000, then on track 347°. Expect RADAR vectors for the RNAV (RNP) Z RWY 16R approach or RADAR vectors to 16L/R, Rwy 17 final approach course.

LANDING RUNWAYS 34L/R, 35: From YUTES on track 067° to GOGGL, then on track 078° to cross BUSHH at or above 12000, then on track 127° to cross SURYP at 11000, then on track 164°. Expect RADAR vectors for the RNAV (RNP) Z RWY 34L approach or RADAR vectors to 34L/R, Rwy 35 final approach course.

LOST COMMUNICATIONS

LANDING NORTH: After SURYP proceed to CEEDR, then left turn to FFU and hold at 11000.

LANDING SOUTH: After LAWVA proceed to RROYO, then left turn to MOINT and hold at 12000.

SW-4, 20 MAR 2025 to 17 APR 2025