

QERVO ONE ARRIVAL (RNAV) Transition Routes

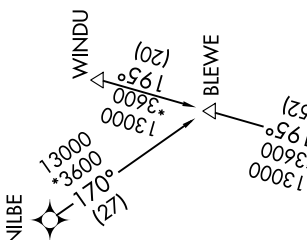
SAN ANTONIO, TEXAS

SC-3, 20 MAR 2025 to 17 APR 2025

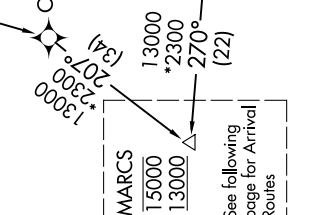
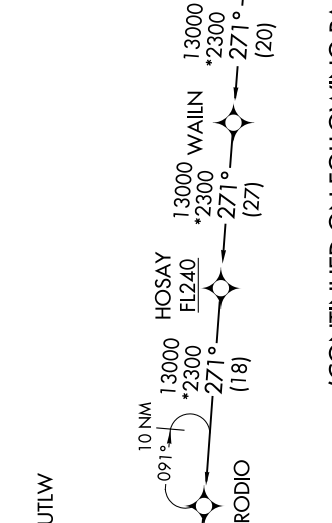
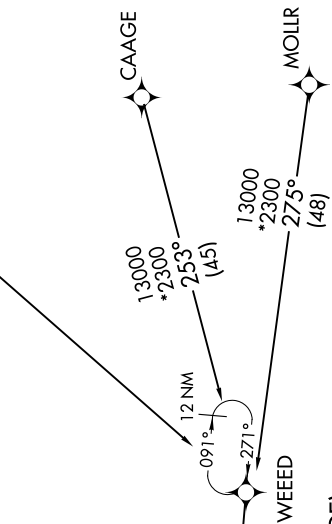
- BLEWE TRANSITION (BLEWE.QERVO1)
- CAAGE TRANSITION (CAAGE.QERVO1)
- LEAD TRANSITION (LEAD.QERVO1)
- MOLLR TRANSITION (MOLLR.QERVO1)
- NILBE TRANSITION (NILBE.QERVO1)
- WAILN TRANSITION (WAILN.QERVO1)
- WINDU TRANSITION (WINDU.QERVO1)

| |
|----------------------------|
| RNAV 1-DME/DME/IRU or GPS. |
| RADAR required. |

SAN ANTONIO APP CON
 127.1 269.1
 BAZ ATIS
 119.325
 KRND ATIS*
 290.525
 KSKF ATIS
 120.45 273.5
 SAT D-ATIS
 118.9
 SSF ATIS
 128.8



NOTE: Jet and turboprop aircraft only.
 NOTE: WAILN Transition for Houston terminal Area Departures only.



See following page for Arrival Routes

(CONTINUED ON FOLLOWING PAGE)

NOTE: Chart not to scale.

SC-3, 20 MAR 2025 to 17 APR 2025

QERVO ONE ARRIVAL (RNAV) Transition Routes

SAN ANTONIO, TEXAS