

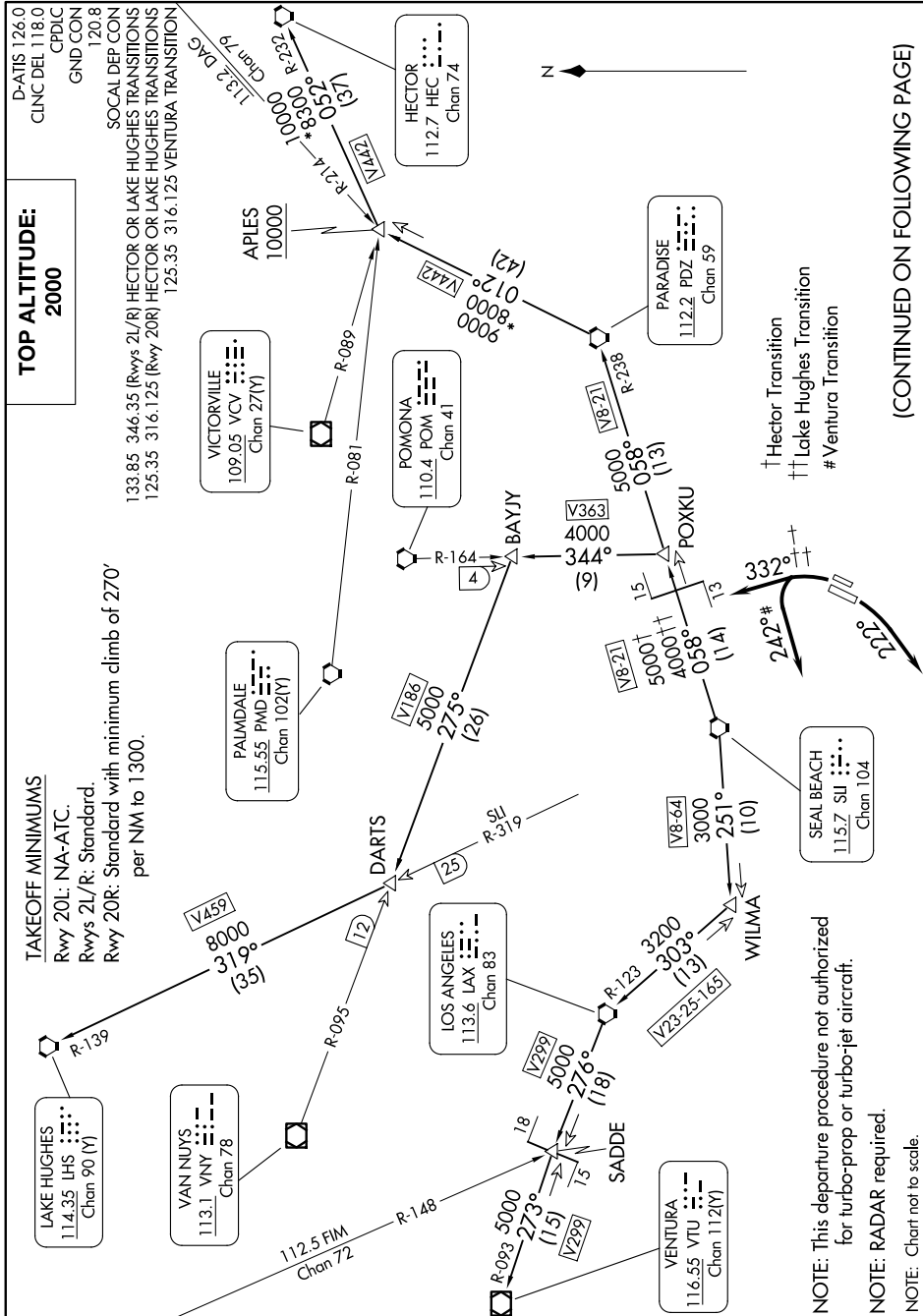
# ANAHEIM ONE DEPARTURE

SW-3, 20 MAR 2025 to 17 APR 2025

**TOP ALTITUDE:**  
**2000**

**TAKEOFF MINIMUMS**  
Rwy 20L: NA-ATC.  
Rwys 2L/R: Standard.  
Rwy 20R: Standard with minimum climb of 270' per NM to 1300.

D-ATIS 126.0  
CLNC DEL 118.0  
CPDIC  
GND CON  
120.8  
SOCAL DEP CON  
133.85 346.35 (Rwys 2L/R) HECTOR OR LAKE HUGHES TRANSITIONS  
125.35 316.125 (Rwy 20R) HECTOR OR LAKE HUGHES TRANSITIONS  
125.35 316.125 VENTURA TRANSITION



† Hector Transition  
†† Lake Hughes Transition  
# Ventura Transition

(CONTINUED ON FOLLOWING PAGE)

NOTE: This departure procedure not authorized for turbo-prop or turbo-jet aircraft.  
NOTE: RADAR required.  
NOTE: Chart not to scale.

# ANAHEIM ONE DEPARTURE

SW-3, 20 MAR 2025 to 17 APR 2025