


LOC/DME I-SNA 111.75 Chan 54(Y)	APP CRS 196°	Rwy Idg TDZE Apt Elev	5700 54 56
---	------------------------	-----------------------------	---------------------------------------


ILS RWY 20R (SA CAT I)

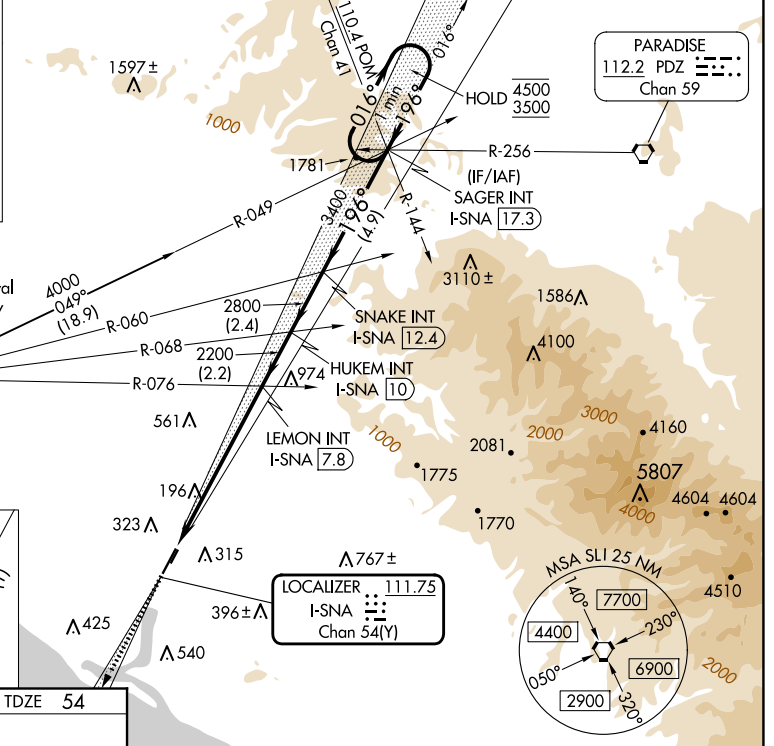
JOHN WAYNE/ORANGE COUNTY (SNA)

⚠ Requires specific OPSPEC, MSPEC, or LOA approval.
Procedure NA when tower closed.

MALS  MISSED APPROACH: Climb to 3000 on I-SNA LOC south course (196°) to MINOE INT/I-SNA 10.9 DME.

D-ATIS 126.0	SOCAL APP CON 121.3 263.1	JOHN WAYNE TOWER * 126.8 (CTAF) 343.625	GND CON 120.8	CLNC DEL 118.0	CPDLC	UNICOM 122.95
------------------------	-------------------------------------	---	-------------------------	--------------------------	-------	-------------------------

ALTERNATE MISSED APCH FIX
SEAL BEACH
SLI 
115.7
Chan 104

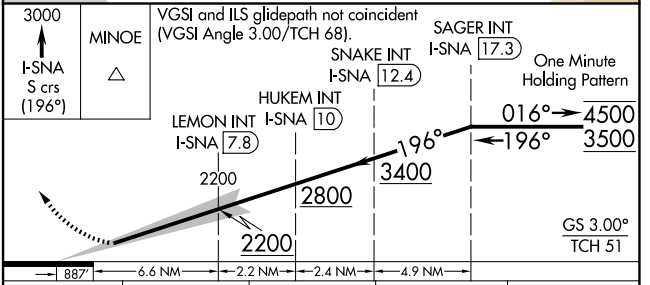
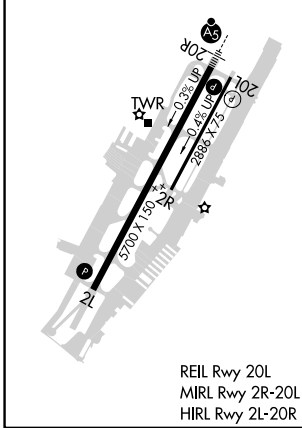


Procedure NA for arrival on SLI VORTAC airway radials 058 CW 080.

SEAL BEACH
115.7 SLI 
Chan 104

MISSED APCH FIX
113.6 LAX
R-123
Chan 83
MINOE
I-SNA 10.9
111.75 I-SNA
Chan 54(Y)

ELEV 56	D	TDZE 54
---------	----------	---------



CATEGORY	A	B	C	D
S-ILS 20R	RA 201/14 167 DA 221			

SA CATEGORY I ILS - SPECIAL AIRCREW & AIRCRAFT CERTIFICATION REQUIRED

SW-3, 20 MAR 2025 to 17 APR 2025

SW-3, 20 MAR 2025 to 17 APR 2025