

# MUSEL EIGHT DEPARTURE

AL-377 (FAA)

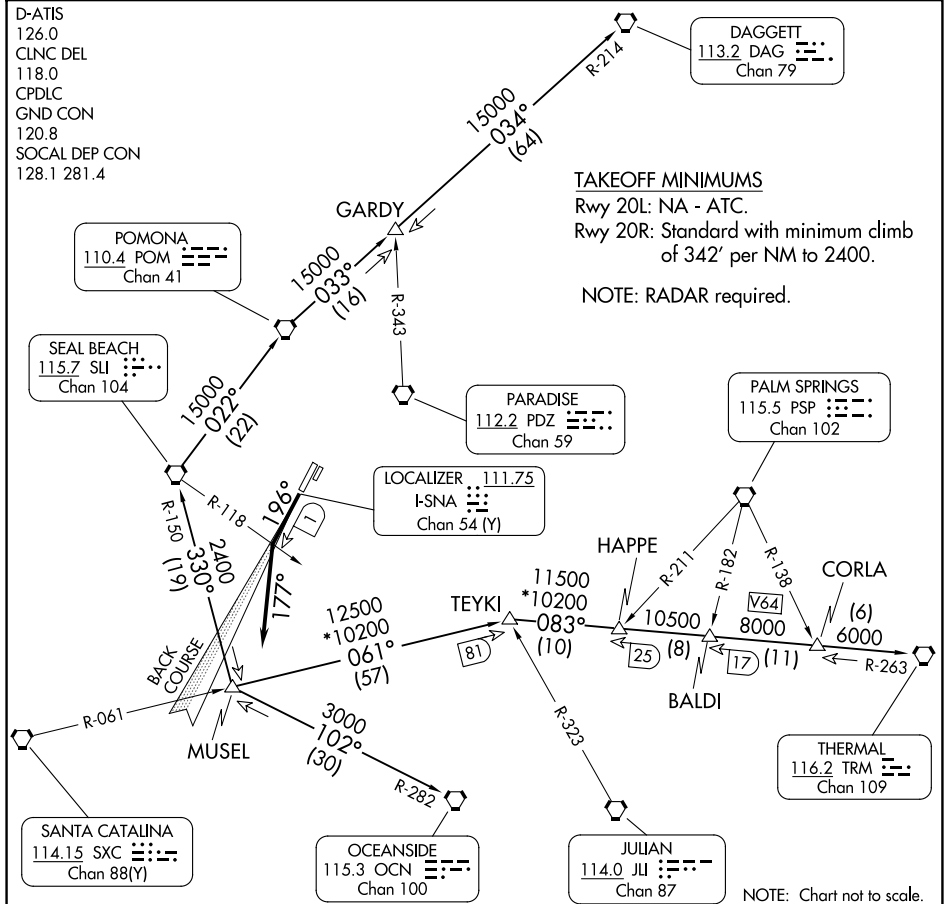
D-ATIS  
126.0  
CLNC DEL  
118.0  
CPDLC  
GND CON  
120.8  
SOCAL DEP CON  
128.1 281.4

DAGGETT  
113.2 DAG  
Chan 79

### TAKEOFF MINIMUMS

Rwy 20L: NA - ATC.  
Rwy 20R: Standard with minimum climb  
of 342' per NM to 2400.

NOTE: RADAR required.



SW-3, 20 MAR 2025 to 17 APR 2025

SW-3, 20 MAR 2025 to 17 APR 2025

## DEPARTURE ROUTE DESCRIPTION

**TAKEOFF RUNWAY 20R:** Climb heading 196° or I-SNA localizer south course to I-SNA 1 DME fix or SLI R-118, turn left heading 177° for vectors to MUSEL INT. Thence . . . .

. . . . on (transition) or (assigned route). Expect filed altitude ten minutes after departure.

**DAGGETT TRANSITION (MUSEL8.DAG):** From over MUSEL INT on SLI R-150 to SLI VORTAC, then on SLI R-022 to POM VORTAC, then on POM R-033 to GARDY INT and on DAG R-214 to DAG VORTAC.

**OCEANSIDE TRANSITION (MUSEL8.OCN):** From over MUSEL INT on OCN R-282 to OCN VORTAC.

**SEAL BEACH TRANSITION (MUSEL8.SLI):** From over MUSEL INT on SLI R-150 to SLI VORTAC.

**THERMAL TRANSITION (MUSEL8.TRM):** From over MUSEL INT on SXC R-061 to TEYKI INT and TRM R-263 to TRM VORTAC.