

# PIGGN THREE DEPARTURE (RNAV)

D-AITS 126.0  
 CLNC DEL 118.0  
 CPDLC  
 GND CON 120.8  
 JOHN WAYNE TOWER\*  
 126.8 343 625  
 SOCIAL DEP CON  
 133.85 346.35 (Rwy 2L)  
 128.1 281.4 (Rwy 20R)

TTRUE

WURMO

LVELL

AVRRY

CNERY

MTBAL

PEELR

TBERD

FNCHH

WILLD

FLWRZ

BLCKD

CSTWY

WAGAV

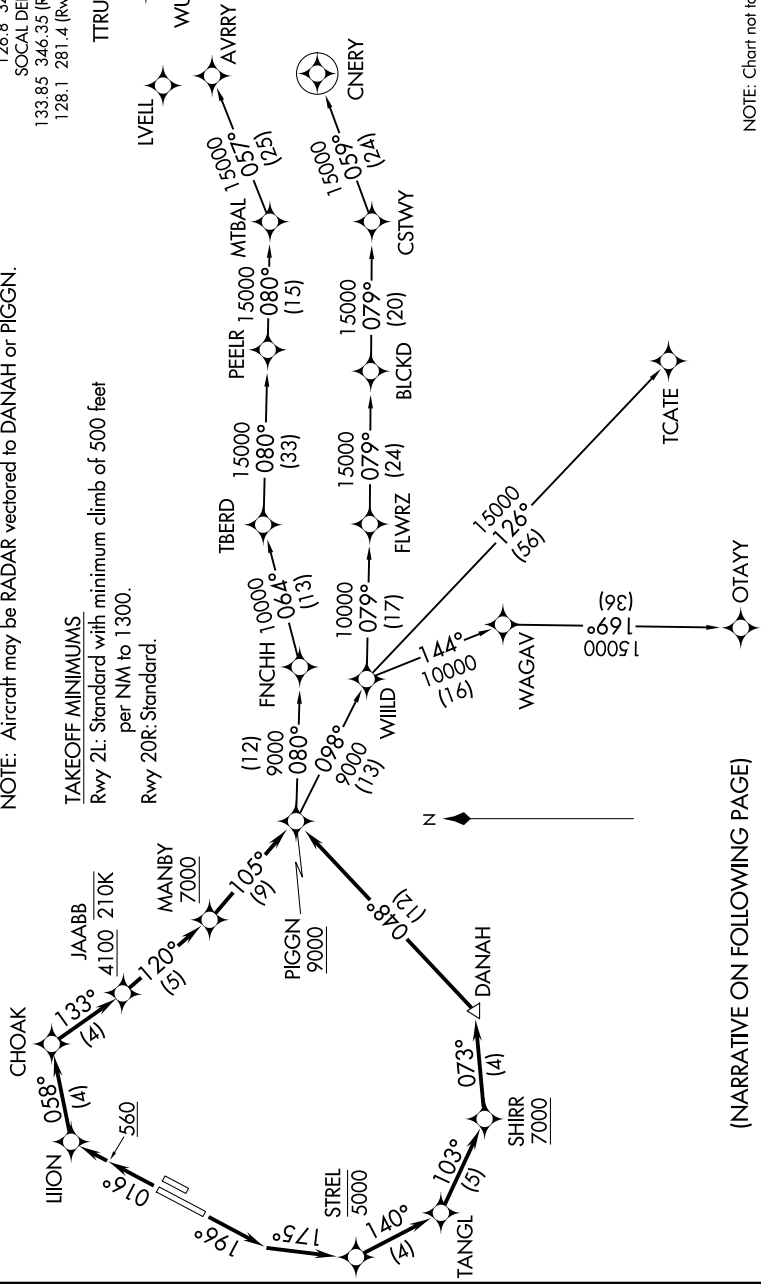
TCATE

OTAYY

NOTE: RADAR required.  
 NOTE: RNAV-1.  
 NOTE: DME/DME/IRU or GPS required.  
 NOTE: Turboprop and turboprop only.  
 NOTE: Parachute jumping all hours, 14000' and below, north of route between PIGGN and FNCHH.  
 NOTE: Aircraft may be RADAR vectored to DANAH or PIGGN.

TAKEOFF MINIMUMS  
 Rwy 2L: Standard with minimum climb of 500 feet per NM to 1300.  
 Rwy 20R: Standard.

**TOP ALTITUDE:**  
**13000**



NOTE: Chart not to scale.

(NARRATIVE ON FOLLOWING PAGE)