

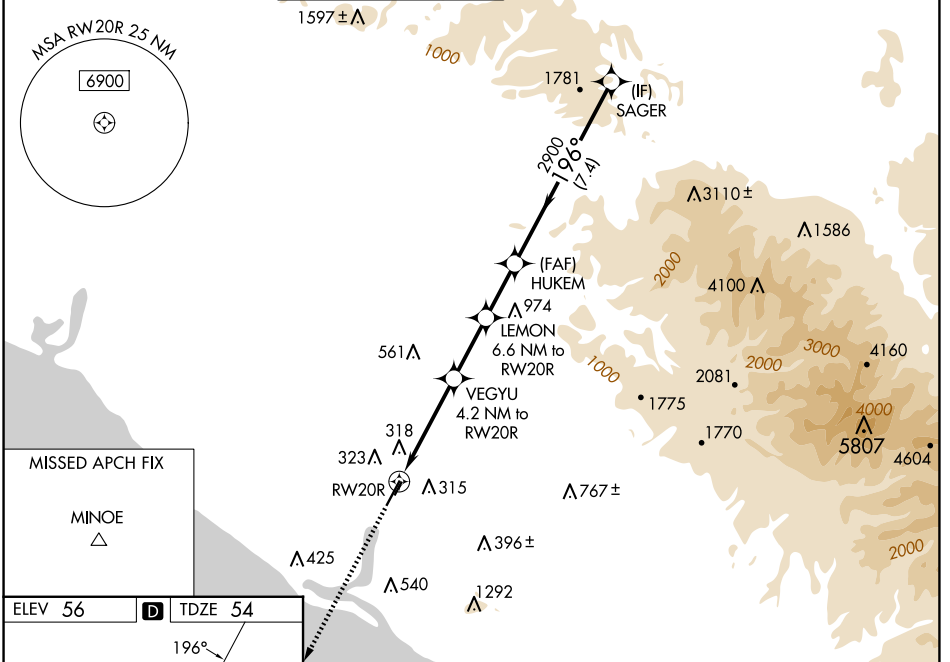
WAAS CH <b>99502</b> <b>W20A</b>	APP CRS <b>196°</b>	Rwy Idg TDZE <b>54</b> Apt Elev <b>56</b>
--	------------------------	---

# RNAV (GPS) Y RWY 20R

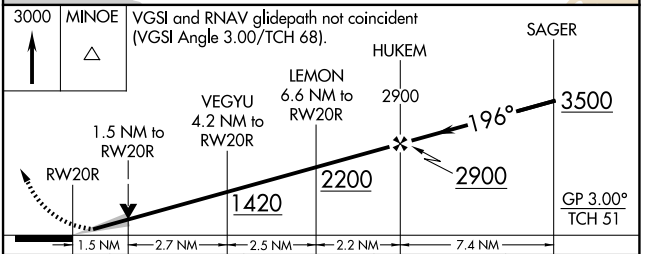
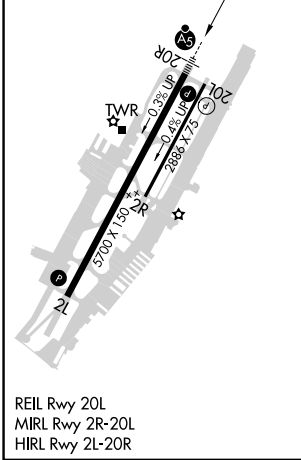
JOHN WAYNE/ORANGE COUNTY (SNA)

RNP APCH - GPS. RADAR required.	MALSR 	MISSED APPROACH: Climb to 3000 direct MINOE.
<p><b>⚠</b> For uncompensated Baro-VNAV systems, LNAV/VNAV NA below 5°C or above 54°C. Circling Rwy 20L NA at night. For inop ALS increase LNAV/VNAV visibility to 1 3/8 SM. *RVR 1800 authorized with use of FD or AP or HUD to DA.</p>		

D-ATIS <b>126.0</b>	SOCAL APP CON <b>121.3 263.1</b>	<b>JOHN WAYNE TOWER *</b> <b>126.8</b> (CTAF) <b>343.625</b>	GND CON <b>120.8</b>	CLNC DEL <b>118.0</b>	CPDLC	UNICOM <b>122.95</b>
------------------------	-------------------------------------	---	-------------------------	--------------------------	-------	-------------------------



ELEV 56	<b>D</b>	TDZE 54
---------	----------	---------



CATEGORY	A	B	C	D
LPV DA*	255/24		201 (200-1/2)	
LNAV/VNAV DA	516/50		462 (500-1)	
LNAV MDA	580/24	526 (600-1/2)	580/55	526 (600-1)
<b>C</b> CIRCLING	640-1	584 (600-1)	840-2 1/4 784 (800-2 1/4)	1180-3 1124 (1200-3)

SW-3, 20 MAR 2025 to 17 APR 2025

SW-3, 20 MAR 2025 to 17 APR 2025