

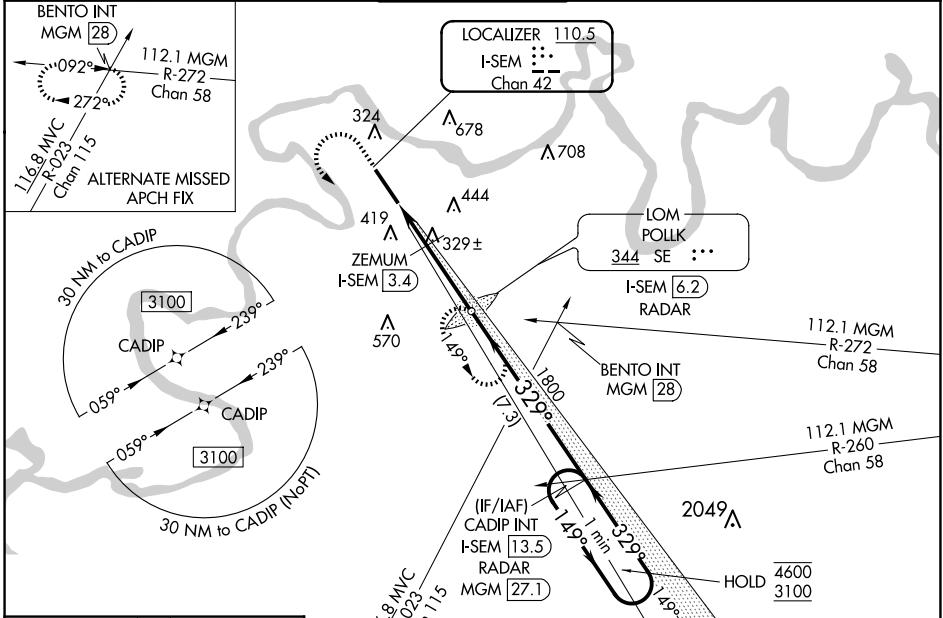
LOC/DME I-SEM 110.5 Chan 42	APP CRS 329°	Rwy Idg TDZE 165 Apt Elev 166	8014
--	------------------------	---	-------------

ILS Y or LOC Y RWY 33

CRAIG FLD (SEM)

ADF required. RNP APCH - GPS.	MALS	MISSED APPROACH: Climb to 1000 then climbing left turn to 3100 direct POLK LOM/6.2 DME/RADAR and hold, continue climb-in-hold to 3100.
<p>⚠ Inop table does not apply to S-ILS 33. For inoperative ALS, increase S-LOC 33 Cat E visibility to 1 1/2 SM and ZEMUM fix minimums S-LOC 33 Cats C-E visibility to 1 1/2 SM.</p> <p>⚠ NA</p>		

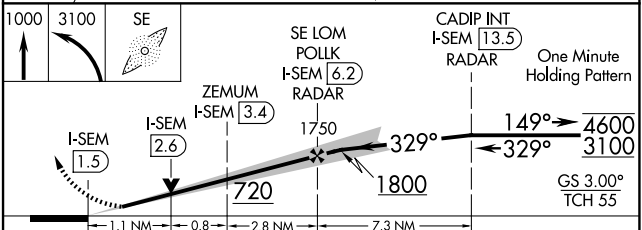
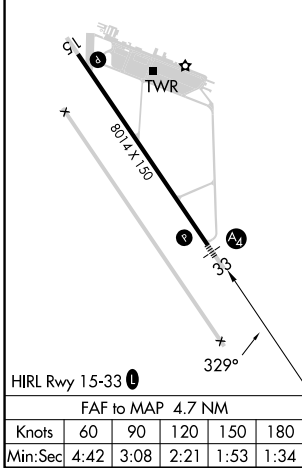
AWOS-3PT 119.15	MONTGOMERY APP CON * 124.0 363.025	CRAIG TOWER* 120.85	GND CON 121.675	UNICOM 122.7 (CTAF) 0
---------------------------	--	-------------------------------	---------------------------	---------------------------------



SE-4, 20 MAR 2025 to 17 APR 2025

SE-4, 20 MAR 2025 to 17 APR 2025

ELEV 166	TDZE 165
----------	----------



CATEGORY	A	B	C	D	E
S-ILS 33	365-3/4 200 (200-3/4)				415-3/4 250 (300-3/4)
S-LOC 33	720-3/4	555 (600-3/4)	720-13/8 555 (600-13/8)		
CIRCLING	720-1	760-1	760-13/8	1040-23/4	1040-3
	554 (600-1)	594 (600-1)	594 (600-13/8)	874 (900-23/4)	874 (900-3)
ZEMUM FIX MINIMUMS					
S-LOC 33	580-3/4	415 (500-3/4)	580-1	415 (500-1)	
CIRCLING	660-1	760-1	760-11/2	1040-23/4	1040-3
	494 (500-1)	594 (600-1)	594 (600-11/2)	874 (900-23/4)	874 (900-3)