

WAAS CH <b>69435</b> W15A	APP CRS <b>149°</b>	Rwy Idg TDZE <b>166</b> Apt Elev <b>166</b>	<b>8014</b>
---------------------------------	------------------------	---	-------------

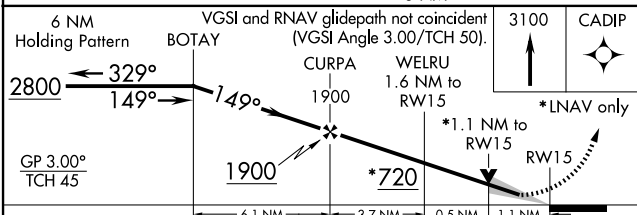
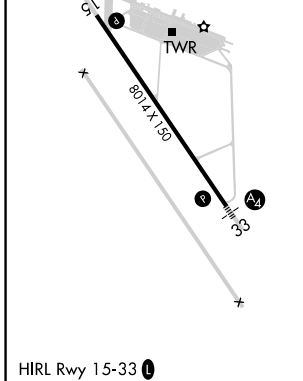
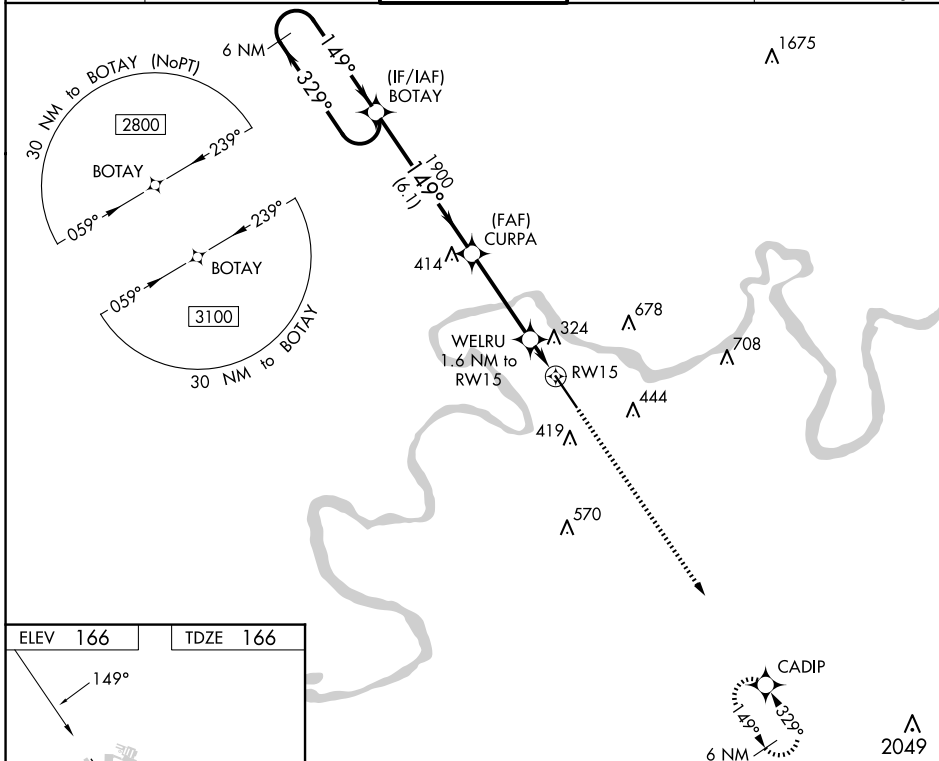
# RNAV (GPS) RWY 15

CRAIG FLD (SEM)

**⚠** Baro-VNAV NA when using Montgomery altimeter setting. For uncompensated Baro-VNAV systems, LNAV/VNAV NA below -15°C (5°F) or above 54°C (130°F). DME/DME RNP-0.3 NA. VDP NA with Montgomery altimeter setting. When local altimeter setting not received, use Montgomery altimeter setting and increase all DA 78 feet, all MDA 80 feet, LPV all Cats visibility 3/8 mile, LNAV/VNAV all Cats visibility and LNAV Cats C and D visibility 1/4 mile, Circling Cat C visibility 1/2 mile and Cat D visibility 1/4 mile.

**MISSED APPROACH:**  
Climb to 3100 direct CADIP and hold.

AWOS-3PT <b>119.15</b>	MONTGOMERY APP CON * <b>124.0 363.025</b>	CRAIG TOWER* <b>120.85</b>	GND CON <b>121.675</b>	UNICOM <b>122.7 (CTAF) 0</b>
---------------------------	--	-------------------------------	---------------------------	---------------------------------



CATEGORY	A	B	C	D
LPV DA		416-3/4	250 (300-3/4)	
LNAV/VNAV DA		569-1 3/8	403 (500-1 3/8)	
LNAV MDA	560-1	394 (400-1)	560-1 1/8	394 (400-1 1/8)
<b>CIRCLING</b>	660-1 494 (500-1)	760-1 594 (600-1)	760-1 1/2 594 (600-1 1/2)	1040-2 3/4 874 (900-2 3/4)

SE-4, 20 MAR 2025 to 17 APR 2025

SE-4, 20 MAR 2025 to 17 APR 2025