

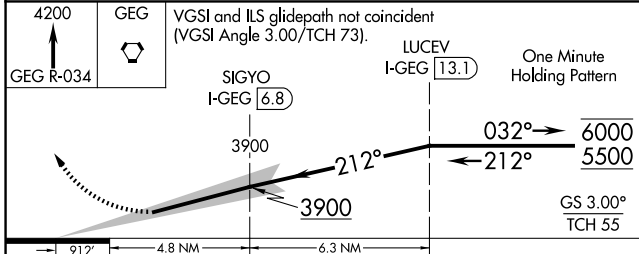
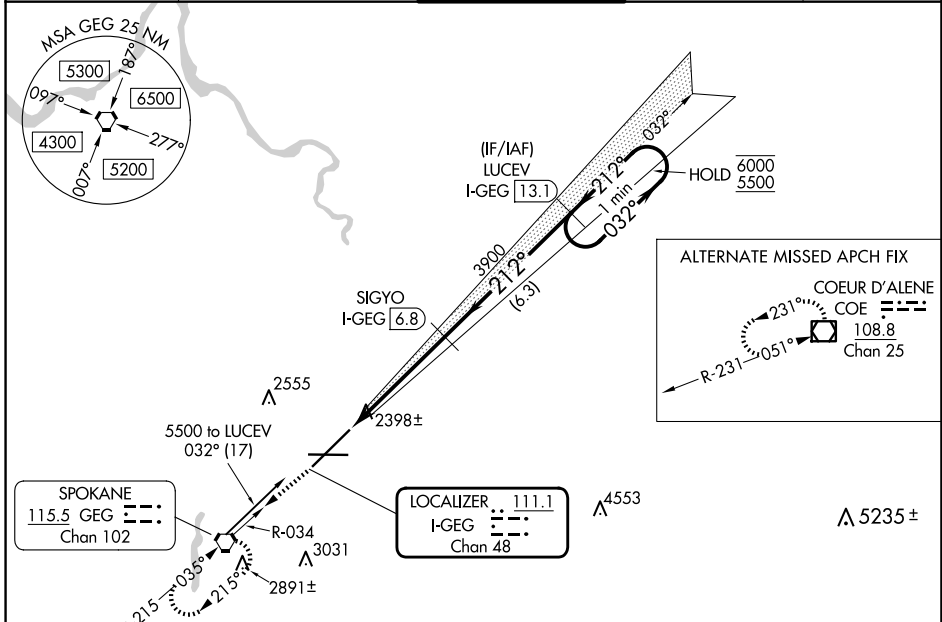
LOC/DME I-GEG 111.1 Chan 48	APP CRS 212°	Rwy Idg 11002 TDZE 2346 Apt Elev 2385
---	------------------------	--

ILS RWY 21 (SA CAT I)

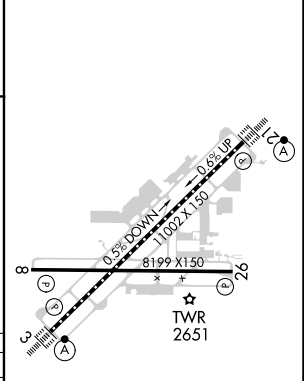
SPOKANE INTL (GEG)

DME required. Requires specific OPSPEC, MSPEC, or LOA approval.	ALSF-2 	MISSED APPROACH: Climb to 4200 on GEG VORTAC R-034 to GEG VORTAC and hold, continue climb-in-hold to 4200.
--	------------	--

ATIS 124.325 254.375	SPOKANE APP CON 123.75 282.25 (205°-025°) 133.35 263.0 (026°-204°)	SPOKANE TOWER 118.3 278.3	GND CON 121.9 348.6	CLNC DEL 127.55
--------------------------------	--	-------------------------------------	-------------------------------	---------------------------



ELEV 2385	D	TDZE 2346
-----------	---	-----------



CATEGORY	A	B	C	D
----------	---	---	---	---

S-ILS 21	RA 197/14 150	DA 2496
----------	---------------	---------

SA CATEGORY I ILS - SPECIAL AIRCREW & AIRCRAFT CERTIFICATION REQUIRED

TDZ/CL Rwy 3 and 21
REIL Rwy 8 and 26
HIRL Rwy 3-21
MIRL Rwy 8-26

NW-1, 20 MAR 2025 to 17 APR 2025

NW-1, 20 MAR 2025 to 17 APR 2025