

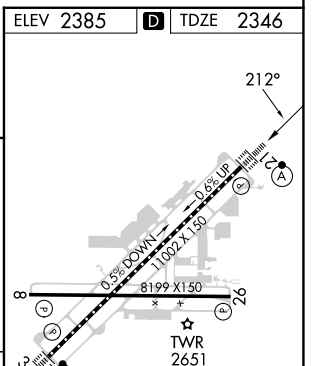
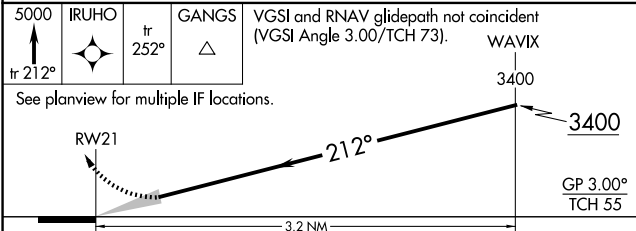
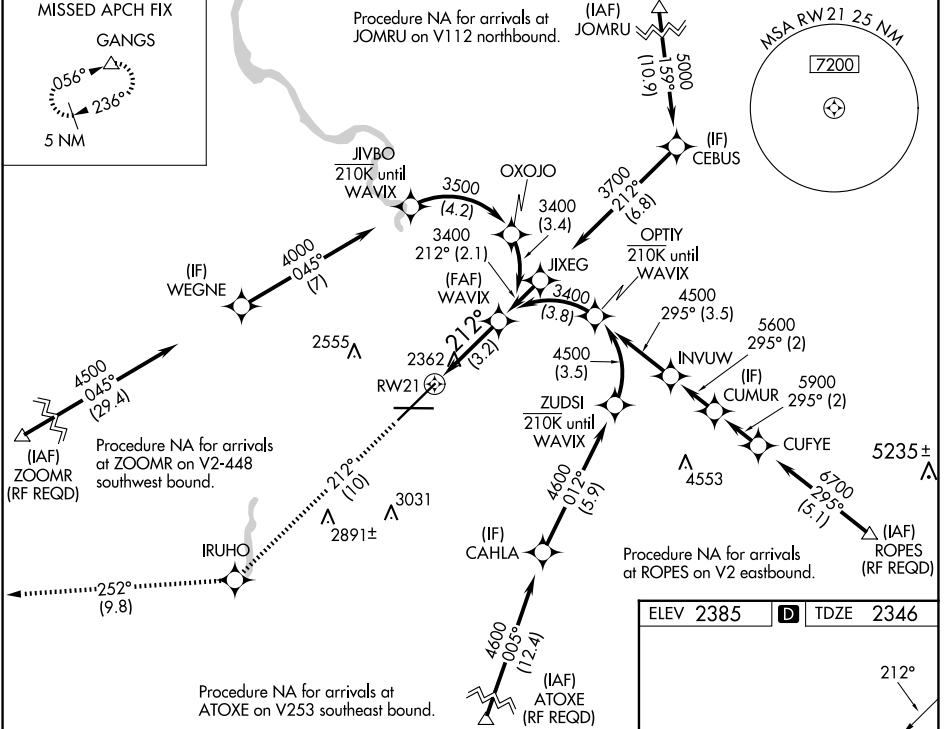
APP CRS	Rwy Idg	11002
212°	TDZE	2346
	Apt Elev	2385

RNAV (RNP) Z RWY 21

SPOKANE INTL (GEG)

RNP AR APCH.	ALSF-2	MISSED APPROACH: Climb to 5000 on track 212° to IRUHO and on track 252° to GANGS and hold.
▼ For uncompensated Baro-VNAV systems, procedure NA below -19°C or above 43°C. For inop ALS increase RNP 0.11 visibility all Cats to ¾, RNP 0.15 visibility all Cats to 1½ and RNP 0.30 visibility all Cats to 1¾.		*Missed approach requires minimum climb of 310 feet per NM to 3000.

ATIS	SPOKANE APP CON	SPOKANE TOWER	GND CON	CLNC DEL
124.325 254.375	123.75 282.25 (205°-025°) 133.35 263.0 (026°-204°)	118.3 278.3	121.9 348.6	127.55



ELEV 5000	IRUHO	GANGS	VGS1 and RNAV glidepath not coincident (VGS1 Angle 3.00/TCH 73).	WAVIX
↑ tr 212°		tr 252°		
See planview for multiple IF locations.				
RWY 21				
GP 3.00° TCH 55				
CATEGORY	A	B	C	D
RNP 0.11 DA*		2596/24	250 (300-½)	
RNP 0.15 DA		2699/30	353 (400-⅝)	
RNP 0.30 DA		2752/45	406 (400-⅞)	

ELEV 2385	TDZE 2346
TWR 2651	
TDZ/CL Rws 3 and 21	
REIL Rws 8 and 26	
HIRL Rwy 3-21	
MIRL Rwy 8-26	

AUTHORIZATION REQUIRED

NW-1, 20 MAR 2025 to 17 APR 2025

NW-1, 20 MAR 2025 to 17 APR 2025