

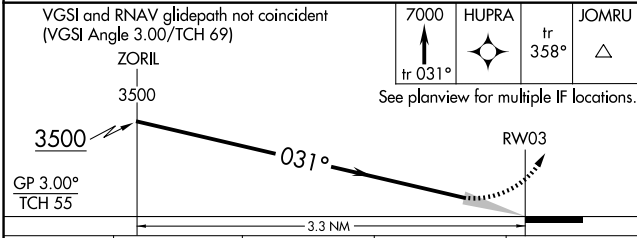
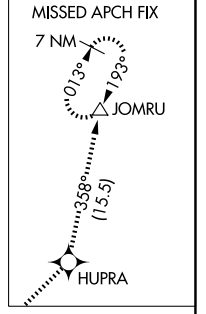
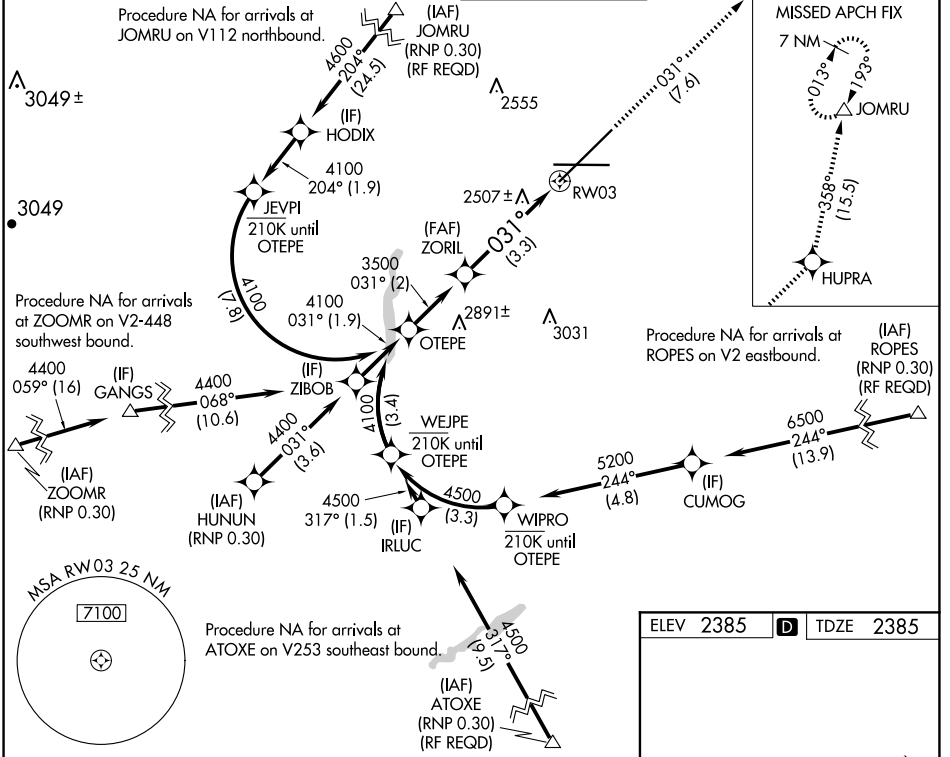
RNAV (RNP) Z RWY 3

SPOKANE INTL (GEG)

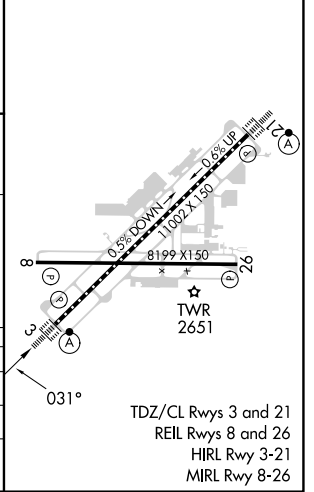
APP CRS 031°	Rwy Idg TDZE Apt Elev	11002 2385 2385
------------------------	-----------------------------	--

RNP AR APCH. ▼ For uncompensated Baro-VNAV systems, procedure NA below -18°C or above 53°C.	ALSF-2 A	MISSED APPROACH: Climb to 7000 on track 031° to HUPRA and on track 358° to JOMRU and hold.
--	-------------	--

ATIS 124.325 254.375	SPOKANE APP CON 123.75 282.25 (205°-025°) 133.35 263.0 (026°-204°)	SPOKANE TOWER 118.3 278.3	GND CON 121.9 348.6	CLNC DEL 127.55
--------------------------------	--	-------------------------------------	-------------------------------	---------------------------



ELEV 2385	D	TDZE 2385
-----------	---	-----------



CATEGORY	A	B	C	D
RNP 0.11 DA		2716/26	331 (400-½)	
RNP 0.30 DA		2842/45	457 (500-¾)	

AUTHORIZATION REQUIRED