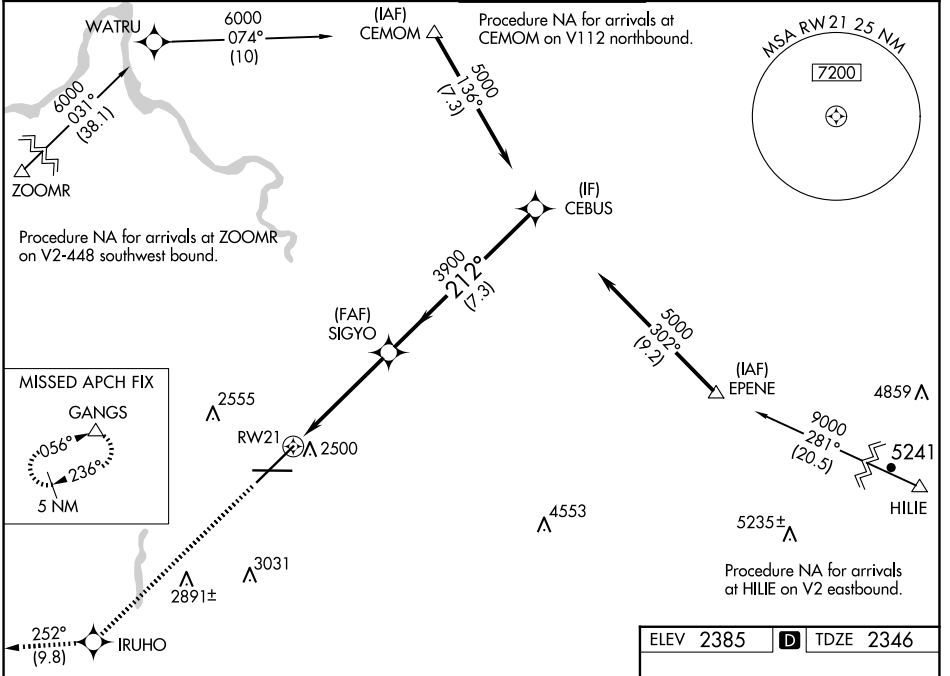


WAAS CH 82619 W21A	APP CRS 212°	Rwy Idg 11002 TDZE 2346 Apt Elev 2385
--	------------------------	--

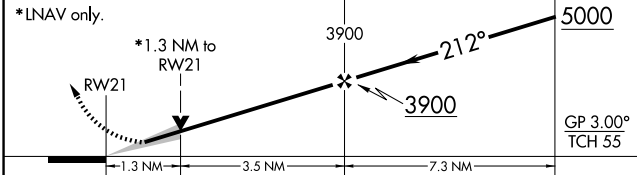
RNAV (GPS) Y RWY 21

SPOKANE INTL (GEG)

RNP APCH.		SPOKANE APP CON (205°-025°) 123.75 282.25 133.35 263.0 (026°-204°)		SPOKANE TOWER 118.3 278.3	GND CON 121.9 348.6	CLNC DEL 127.55
<p>▼ For uncompensated Baro-VNAV systems, LNAV/VNAV NA below -18°C or above 53°C.</p>				ALSF-2 A	MISSED APPROACH: Climb to 5000 direct IRUHO and on track 252° to GANGS and hold.	



5000	IRUHO	tr 252°	GANGS	VGSI and RNAV glidepath not coincident (VGSI Angle 3.00/TCH 73).
------	-------	---------	-------	--



CATEGORY	A	B	C	D
LPV DA		2546/18	200 (200-½)	
LNAV/VNAV DA		2720/45	374 (400-¾)	
LNAV MDA	2800/24	454 (500-½)	2800/45	454 (500-¾)
CIRCLING	2960-1 575 (600-1)	2980-1 595 (600-1)	3300-2¾ 915 (1000-2¾)	3400-3 1015 (1100-3)

ELEV 2385	TDZE 2346
-----------	-----------

212°

0.5% DOWN 1100X150

0.5% UP

8199 X150

TWR 2651

TDZ/CL Rwy 3 and 21

REIL Rwy 8 and 26

HIRL Rwy 3-21

MIRL Rwy 8-26

NW-1, 20 MAR 2025 to 17 APR 2025

NW-1, 20 MAR 2025 to 17 APR 2025