

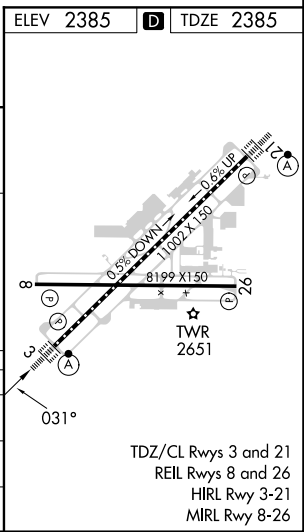
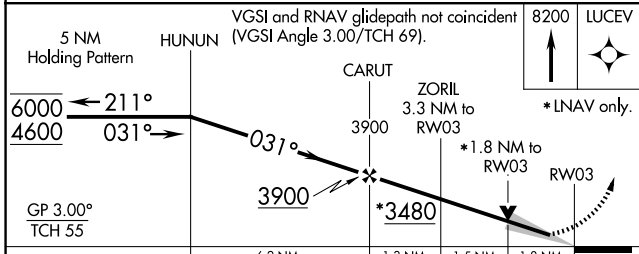
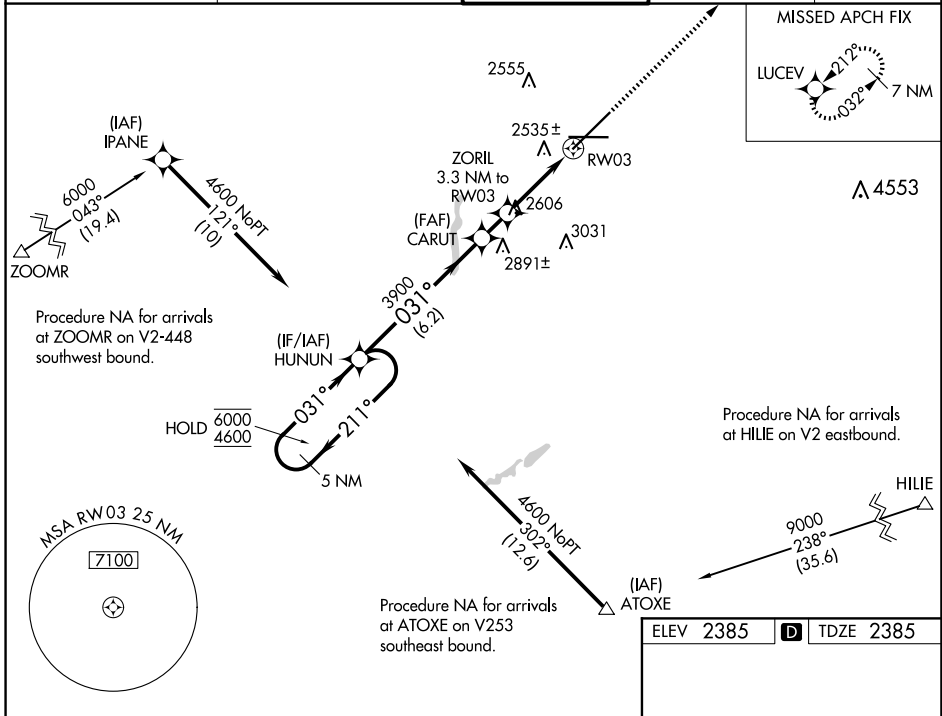
WAAS CH 81920 W03A	APP CRS 031°	Rwy Idg TDZE Apt Elev	11002 2385 2385
--	------------------------	-----------------------------	--

RNAV (GPS) Y RWY 3

SPOKANE INTL (GEG)

RNP APCH.	ALSF-2	MISSED APPROACH: Climb to 8200 direct LUCEV and hold, continue climb-in-hold to 8200.
<p>▼ For uncompensated Baro-VNAV systems, LNAV/VNAV NA below -18°C or above 53°C. For inop ALS increase LNAV/VNAV all Cats visibility to 1½ SM and increase LNAV Cats C and D visibility to 1¼ SM.</p>		

ATIS 124.325 254.375	SPOKANE APP CON 123.75 282.25 (205°-225°) 133.35 263.0 (026°-204°)	SPOKANE TOWER 118.3 278.3	GND CON 121.9 348.6	CLNC DEL 127.55
--------------------------------	--	-------------------------------------	-------------------------------	---------------------------



CATEGORY	A	B	C	D
LPV DA	2585/18		200 (200-½)	
LNAV/VNAV DA	2962-1½		577 (600-½)	
LNAV MDA	3020/24	635 (700-½)	3020/60 635 (700-¼)	3020-1½ 635 (700-1½)

NW-1, 20 MAR 2025 to 17 APR 2025

NW-1, 20 MAR 2025 to 17 APR 2025