

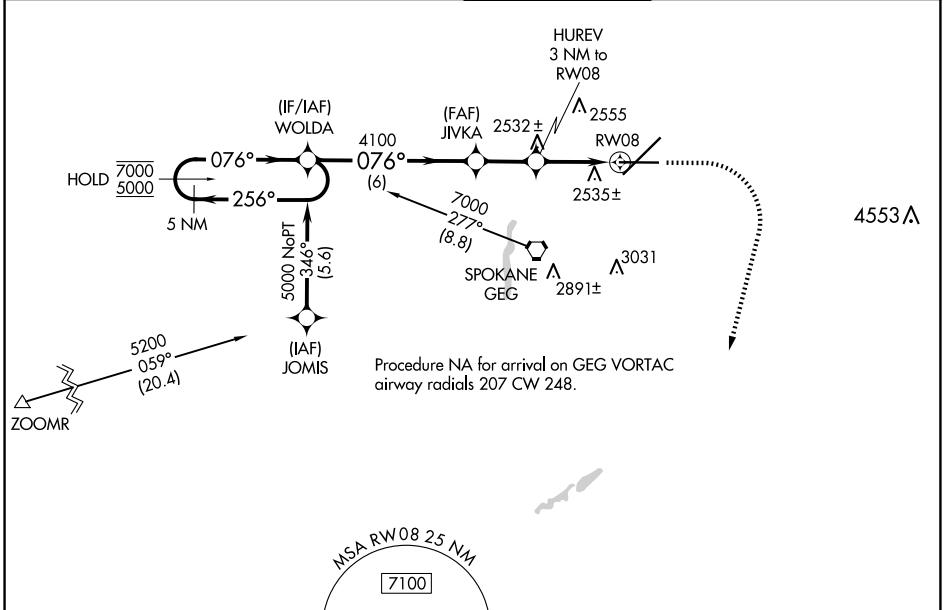
WAAS CH 48801 W08A	APP CRS 076°	Rwy Idg TDZE Apt Elev	8199 2376 2385
--	------------------------	-----------------------------	---

RNAV (GPS) Y RWY 8

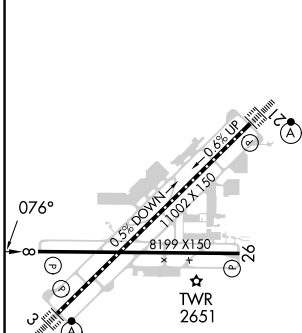
SPOKANE INTL (GEG)

RNP APCH.	MISSED APPROACH: Climb to 2900, then climbing right turn to 6000 direct ATOXE and hold.
▼ For uncompensated Baro-VNAV systems, LNAV/VNAV NA below -18°C or above 52°C.	

ATIS 124.325 254.375	SPOKANE APP CON 123.75 282.25 (205°-025°) 133.35 263.0 (026°-204°)	SPOKANE TOWER 118.3 278.3	GND CON 121.9 348.6	CLNC DEL 127.55
--------------------------------	--	-------------------------------------	-------------------------------	---------------------------



ELEV 2385	D	TDZE 2376
-----------	----------	-----------



	5 NM Holding Pattern		WOLDA		JIVKA	HUREV 3 NM to RWY 08	2900	6000	ATOXE
	7000	5000	256°	076°	076°	4100	3400	1.2 NM to RWY 08	
			6 NM		2.1 NM	1.8 NM	1.2		
CATEGORY	A		B		C		D		
LPV DA			2576-¾		200 (200-¾)				
LNAV/VNAV DA			2834-1½		458 (500-1½)				
LNAV MDA	2800-1		424 (500-1)		2800-1¼		424 (500-1¼)		

NW-1, 20 MAR 2025 to 17 APR 2025

NW-1, 20 MAR 2025 to 17 APR 2025