

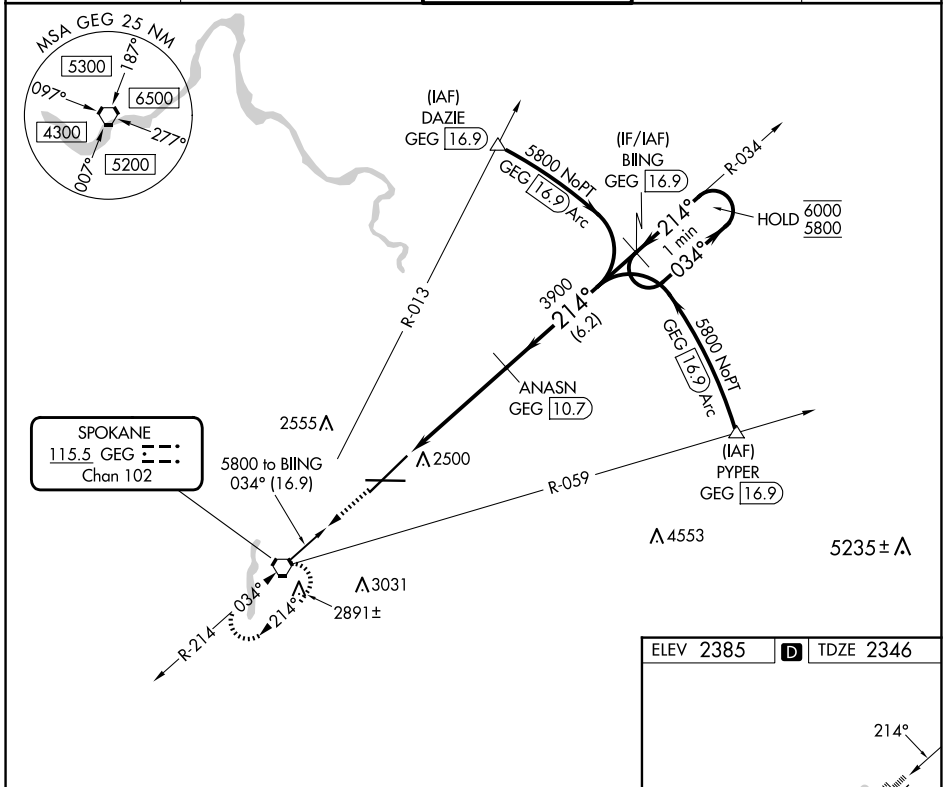
VORTAC GEG 115.5 Chan 102	APP CRS 214°	Rwy Idg TDZE Apt Elev	11002 2346 2385
---	------------------------	-----------------------------	--

VOR RWY 21

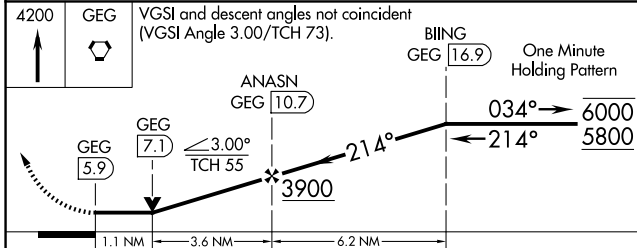
SPOKANE INTL (GEG)

DME required.		ALSIF-2	MISSED APPROACH: Climb to 4200 direct GEG VORTAC and hold, continue climb-in-hold to 4200.	
---------------	--	---------	--	--

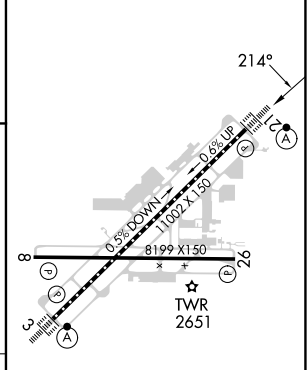
ATIS 124.325 254.375	SPOKANE APP CON 123.75 282.25 (205°-025°) 133.35 263.0 (026°-204°)	SPOKANE TOWER 118.3 278.3	GND CON 121.9 348.6	CLNC DEL 127.55
--------------------------------	--	-------------------------------------	-------------------------------	---------------------------



4200 GEG VGSI and descent angles not coincident (VGSI Angle 3.00/TCH 73).



ELEV 2385	TDZE 2346
-----------	-----------



CATEGORY	A	B	C	D
S-21	2760/24	414 (400-½)	2760/40	414 (400-¾)
CIRCLING	2960-1 575 (600-1)	2980-1 595 (600-1)	3180-2¼ 795 (800-2¼)	3380-3 995 (1000-3)

TDZ/CL Rwys 3 and 21
REIL Rwys 8 and 26
HIRL Rwy 3-21
MIRL Rwy 8-26

NW-1, 20 MAR 2025 to 17 APR 2025

NW-1, 20 MAR 2025 to 17 APR 2025