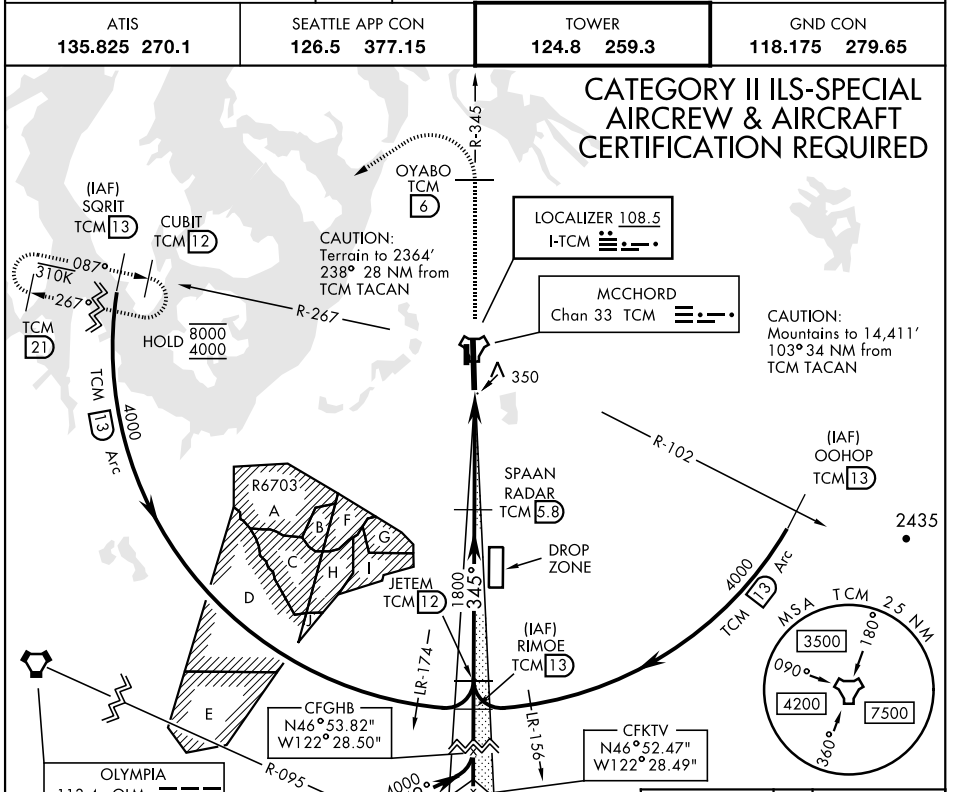
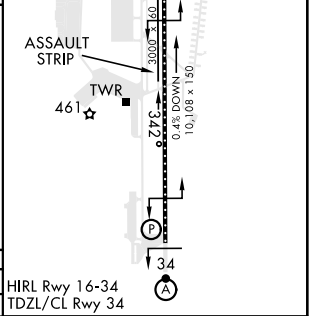
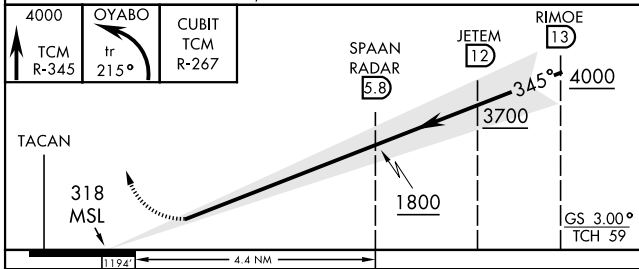


ILS RWY 34 (CAT II)

LOC I-TCM 108.5	APCH CRS 345°	Rwy Idg TDZE Arprt Elev 10,108 322 322	ALSF-2 	MISSED APPROACH: Climb to 4000 on TCM TACAN R-345 to OYABO, then turn left via 215° course to intercept TCM R-267 to CUBIT and hold, continue climb in hold to 4000. Cross OYABO at or above 3000.
ATIS 135.825 270.1		SEATTLE APP CON 126.5 377.15	TOWER 124.8 259.3	GND CON 118.175 279.65



ELEV 322	TDZE 322



CATEGORY	A	B	C	D	E
S-ILS 34	RA 139/12		100	DA 422	

ILS RWY 34 (CAT II)

NW-1, 20 MAR 2025 to 17 APR 2025

NW-1, 20 MAR 2025 to 17 APR 2025