

TACOMA, WASHINGTON

ILS or LOC RWY 16

MCCHORD FLD (KTCM)

LOC I-MAR 109.9	APCH CRS 165°	Rwy Idg 10,108 TDZE 286 Arpt Elev 322
---------------------------	-------------------------	--

AL-414 [USAF]

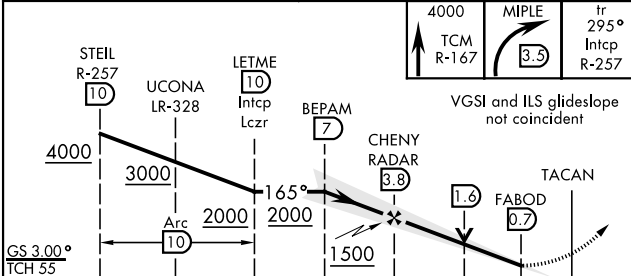
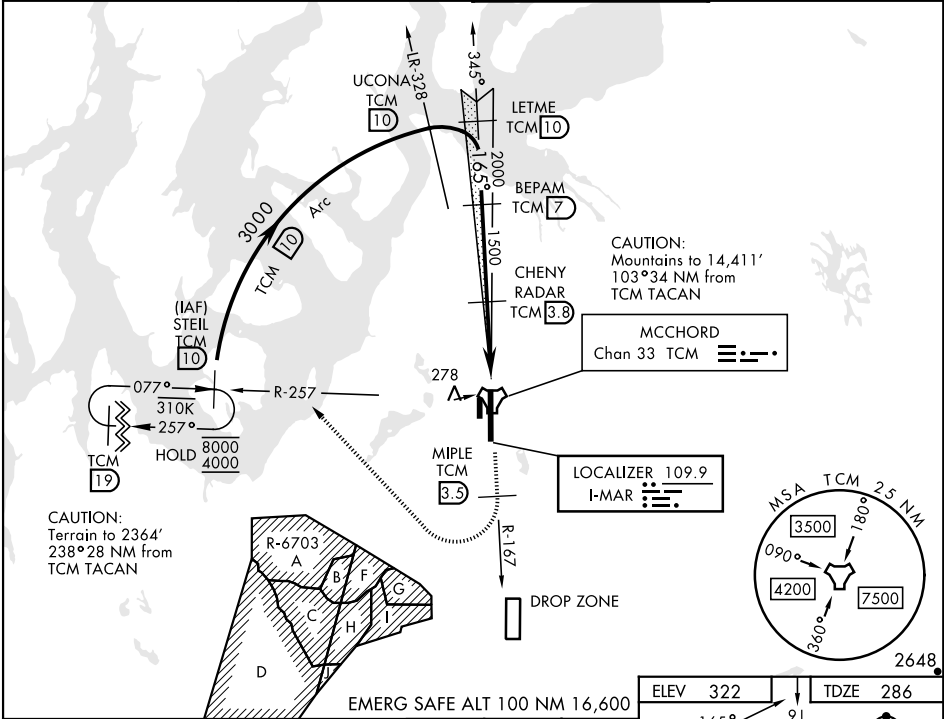
RADAR or DME required.

▽ * When ALS inop, increase RVR to 45, vis to 7/8 mile.
****** When ALS inop, increase CAT AB RVR to 55, vis to 1 mile, CAT CDE vis to 1 3/8 miles.
******* Circling not authorized E of Rwy 16-34.



MISSED APPROACH: Climb to 4000 on TCM TACAN R-167. At 3.5 DME turn right via 295° course to intercept TCM R-257 to STEL and hold. Continue climb in hold to 4000.

ATIS 135.825 270.1	SEATTLE APP CON 126.5 377.15	TOWER 124.8 259.3	GND CON 118.175 279.65
------------------------------	--	-----------------------------	----------------------------------



ELEV 322	TDZE 286
165° 91 162° 371 3000' 501 x 801 (01) 41 3/4 (00) 342 34	(A1) (P)
ASSAULT STRIP	TWR 461
34	TDZL/CL Rwy 34 HIRL Rwy 16-34
FAF to MAP 3.1 NM	
Knots	60 90 120 150 180
Min:Sec	3:06 2:04 1:33 1:14 1:02

CATEGORY	A	B	C	D	E
S-ILS 16*	601/40		315	(300-34)	
S-LOC 16**	860/40	574 (600-34)	860-1 1/4	574	(600-1 1/4)
***	940-1	618 (700-1)	940-1 3/4 618 (700-1 3/4)	940-2 618 (700-2)	1020-2 1/2 698 (700-2 1/2)

TACOMA, WASHINGTON

47°08'N-122°29'W

MCCHORD FLD (KTCM)

Amtd 5 20APR23

ILS or LOC RWY 16

NW-1, 20 MAR 2025 to 17 APR 2025

NW-1, 20 MAR 2025 to 17 APR 2025