

TACOMA, WASHINGTON

# ILS or LOC RWY 34

LOC I-TCM <b>108.5</b>	APCH CRS <b>345°</b>	Rwy Idg <b>10,108</b>
		TDZE <b>322</b>
		Arprt Elev <b>322</b>

[USAF]

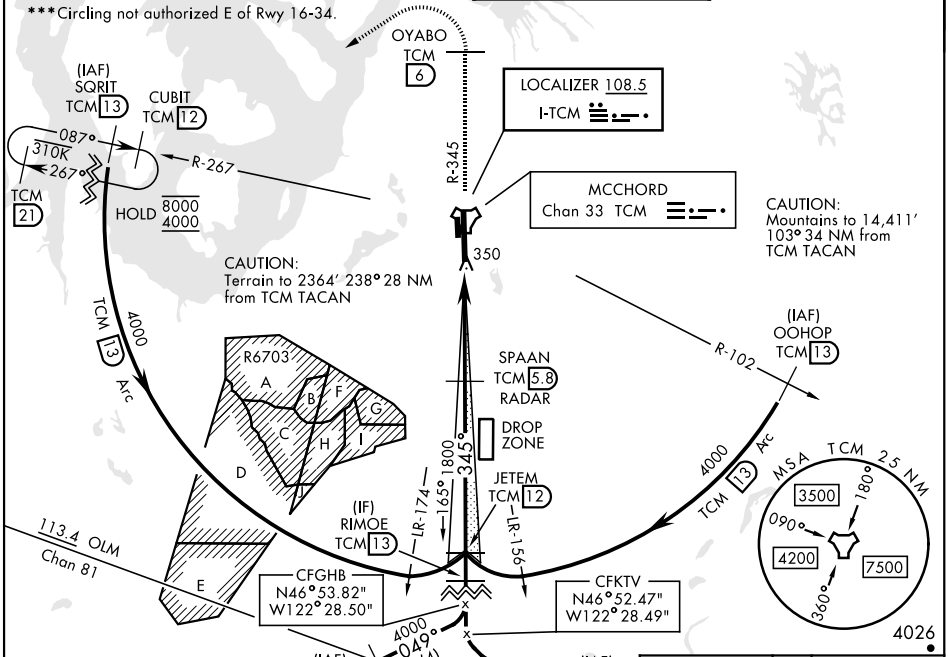
MCCHORD FLD (KTCM)

**RADAR or DME required.**

ALSF-2

MISSED APPROACH: Climb to 4000 on TCM TACAN R-345 to OYABO, then turn left via 215° course to intercept TCM R-267 to CUBIT and hold, continue climb-hold to 4000. Cross OYABO at or above 3000.

ATIS <b>135.825 270.1</b>	SEATTLE APP CON <b>126.5 377.15</b>	TOWER <b>124.8 259.3</b>	GND CON <b>118.175 279.65</b>
------------------------------	--	-----------------------------	----------------------------------

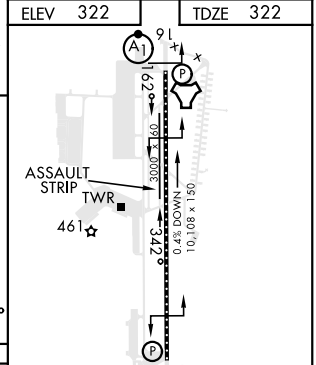
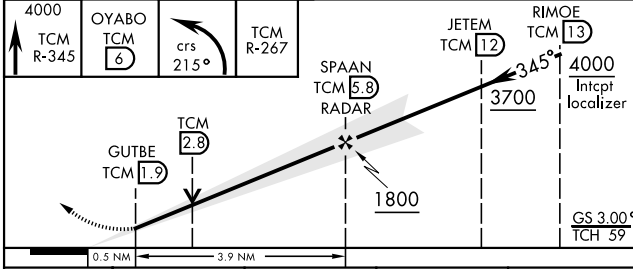


NW-1, 20 MAR 2025 to 17 APR 2025

NW-1, 20 MAR 2025 to 17 APR 2025

ELEV 322	TDZE 322
----------	----------

EMERG SAFE ALT 100 NM 16,600



CATEGORY	A	B	C	D
S-ILS 34*	522/18 200		(200-1/2)	
S-LOC 34**	860/40	538 (600-3/4)	860/55	538 (600-1)
CIRCLING ***	940-1	618 (700-1)	940-1 3/4 618 (700-1 3/4)	940-2 618 (700-2)

HIRL Rwy 16-34 TDZL/CL Rwy 34	FAF to MAP 3.9 NM					
	Knots	60	90	120	150	180
	Min:Sec	3:54	2:36	1:57	1:34	1:18

TACOMA, WASHINGTON  
Amdt 5 30NOV23

47°08'N-122°29'W

MCCHORD FLD (KTCM)

# ILS or LOC RWY 34