

# DADES ONE ARRIVAL (RNAV) Transition Routes

TAMPA, FLORIDA

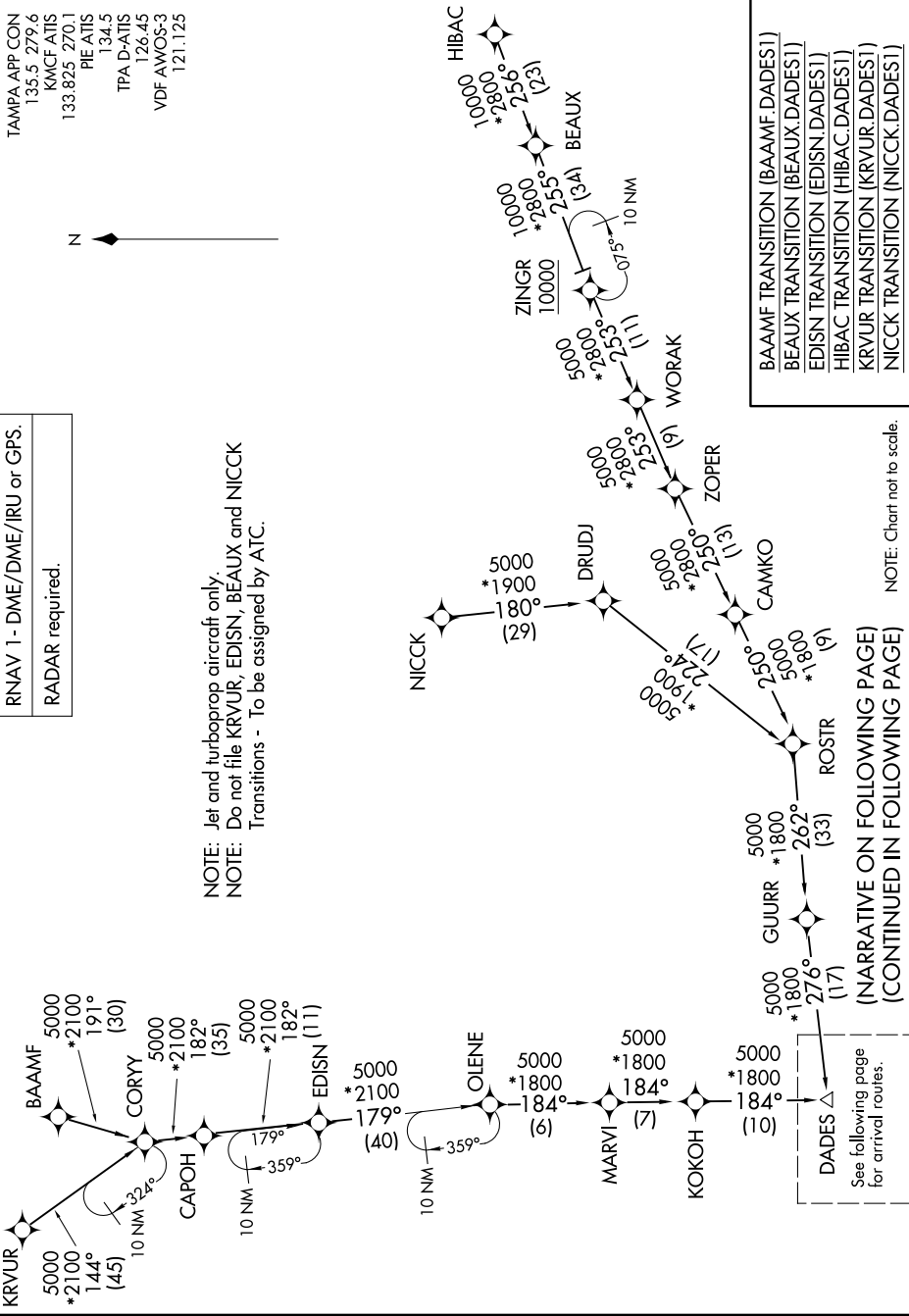
SE-3, 20 MAR 2025 to 17 APR 2025

RNAV 1- DME/DME/IRU or GPS.
RADAR required.

TAMPA APP CON  
135.5 279.6  
KMCF ATIS  
133.825 270.1  
PIE ATIS  
134.5  
TPA D-ATIS  
126.45  
VDF AWOS-3  
121.125



NOTE: Jet and turboprop aircraft only.  
NOTE: Do not file KRVUR, EDISN, BEAUX, and NICCK  
Transitions - To be assigned by ATC.



BAAMF TRANSITION (BAAMF.DADES1)  
BEAUX TRANSITION (BEAUX.DADES1)  
EDISN TRANSITION (EDISN.DADES1)  
HIBAC TRANSITION (HIBAC.DADES1)  
KRVUR TRANSITION (KRVUR.DADES1)  
NICCK TRANSITION (NICCK.DADES1)

(NARRATIVE ON FOLLOWING PAGE)  
(CONTINUED IN FOLLOWING PAGE)

See following page for arrival routes.

NOTE: Chart not to scale.

# DADES ONE ARRIVAL (RNAV) Transition Routes

TAMPA, FLORIDA

SE-3, 20 MAR 2025 to 17 APR 2025