

TAMPA, FLORIDA

ILS or LOC RWY 5

LOC I-MCF 109.5	APCH CRS 044°	Rwy Idg 11,421 TDZE 10 Arprt Elev 14
---------------------------	-------------------------	---

AL-418 [USAF]

MACDILL AFB (KMCF)

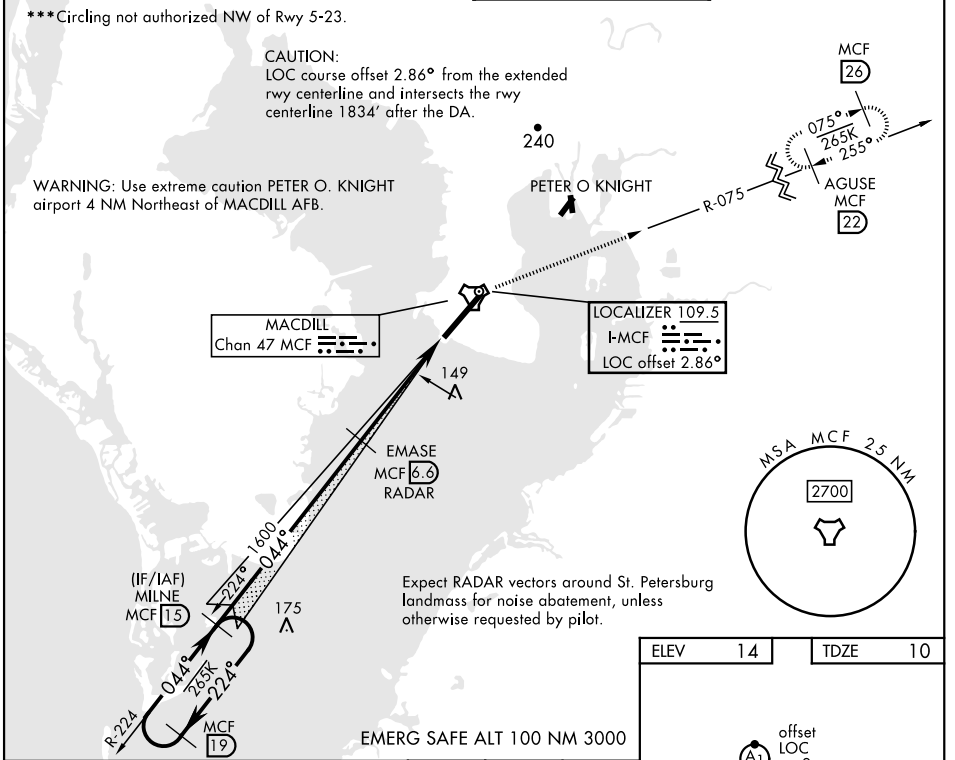
RADAR or DME required.		ALSIF-1 	MISSED APPROACH: Climb to 2700 via MCF TACAN R-075 to MCF 22 DME and hold. Cross 8 DME at 1700. RNAV or ATC RADAR required for missed approach.
*When ALS inop, increase RVR to 40, vis to 3/4 mile. **When ALS inop, increase CAT AB RVR to 55, vis to 1 mile; CAT CDE RVR to 60, vis to 1 1/2 miles.			

ATIS 133.825 270.1	TAMPA APP CON 124.95 354.0	TOWER 120.175 294.7	GND CON 118.575 275.8
------------------------------	--------------------------------------	-------------------------------	---------------------------------

***Circling not authorized NW of Rwy 5-23.

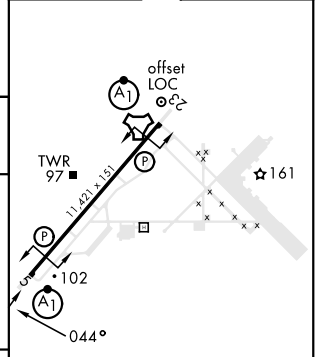
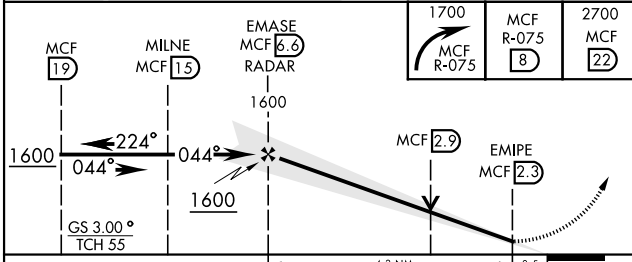
CAUTION:
LOC course offset 2.86° from the extended rwy centerline and intersects the rwy centerline 1834' after the DA.

WARNING: Use extreme caution PETER O. KNIGHT airport 4 NM Northeast of MACDILL AFB.



Expect RADAR vectors around St. Petersburg landmark for noise abatement, unless otherwise requested by pilot.

ELEV	14	TDZE	10
------	----	------	----



CATEGORY	A	B	C	D	E
S-ILS 5 *	260/24 (300-1/2)				
S-LOC 5 **	420/24	410 (500-1/2)	420/40	410 (500-3/4)	
*** CIRCLING	500-1	540-1	540-1 1/2	580-2	1020-3
	486 (500-1)	526 (600-1)	526 (600-1 1/2)	566 (600-2)	1006 (1100-3)

HIRL Rwy 5-23					
FAF to MAP 4.3 NM					
Knots	60	90	120	150	180
Min:Sec	4:18	2:52	2:09	1:43	1:26

TAMPA, FLORIDA
Amdt 1 18MAY23

27°51'N-82°31'W

MACDILL AFB (KMCF)

ILS or LOC RWY 5

SE-3, 20 MAR 2025 to 17 APR 2025

SE-3, 20 MAR 2025 to 17 APR 2025