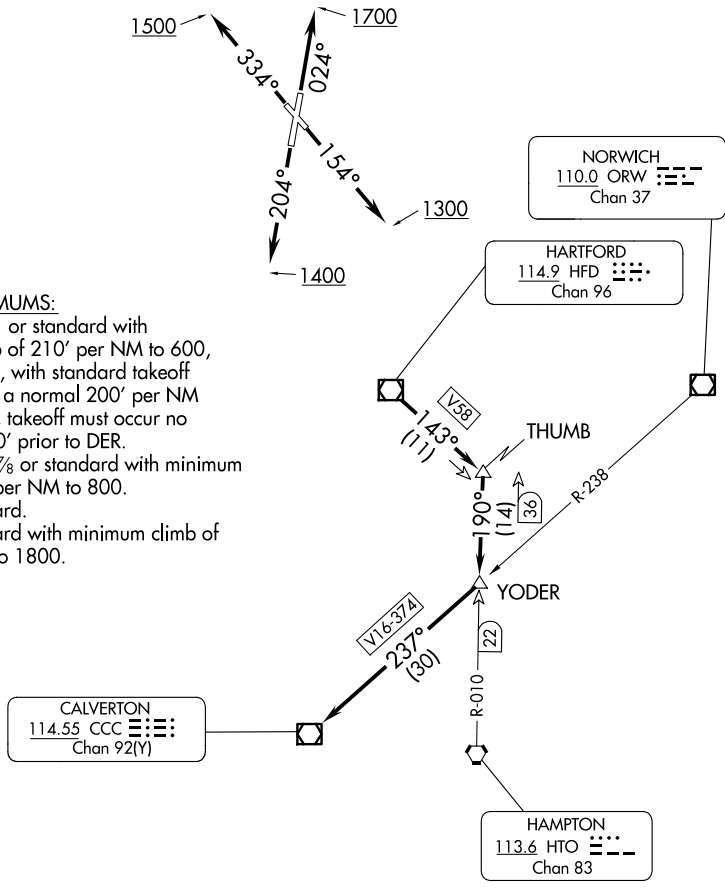


# COASTAL NINE DEPARTURE

ATIS  
127.1 263.15  
GND CON  
121.7 289.4  
WESTFIELD TOWER ★  
118.9 (CTAF) 251.1  
BRADLEY DEP CON  
125.35 281.5

**TOP ALTITUDE:  
3000**

**TAKEOFF MINIMUMS:**  
Rwy 2: 200-1½ or standard with minimum climb of 210' per NM to 600, or alternatively, with standard takeoff minimums and a normal 200' per NM climb gradient, takeoff must occur no later than 1200' prior to DER.  
Rwy 15: 400-1⅓ or standard with minimum climb of 460' per NM to 800.  
Rwy 20: Standard.  
Rwy 33: Standard with minimum climb of 340' per NM to 1800.



NE-1, 20 MAR 2025 to 17 APR 2025

NE-1, 20 MAR 2025 to 17 APR 2025

NOTE: RADAR required.  
NOTE: Initial departure headings are predicated on avoiding noise sensitive areas, flight crew awareness and compliance is important in minimizing noise impacts on surrounding communities.

(NARRATIVE ON FOLLOWING PAGE)

NOTE: Chart not to scale.