

VORTAC BAF 113.0 Chan 77	APCH CRS 208°	Rwy ldg THRE 267 Arpt Elev 270	AL-446 [USAF]	WESTFIELD-BARNES RGNL (KBAF)
--	-------------------------	--	---------------	------------------------------

⚠ *When ALS inop, increase CAT CDE vis to 1½ miles.
 **When ALS inop, increase CAT CDE vis to 1% miles.

MALS R

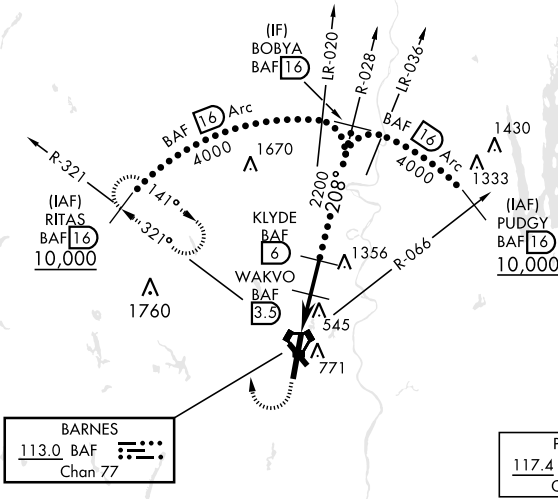
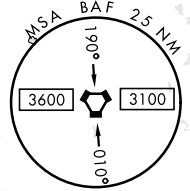
MISSED APPROACH: Climb to 1300, then climbing right turn to 4000 via hdg 010° and BAF VORTAC R-321 to RITAS and hold.

ATIS 127.1 263.15	BRADLEY APP CON 125.35 281.5	WESTFIELD TOWER ★ 118.9 (CTAF) 0 251.1	GND CON 121.7 289.4
-----------------------------	--	--	-------------------------------

When lcl altimeter setting not received, use Bradley Intl altimeter setting.
 When VGSI inop, straight-in/circling Rwy 20 NA at night.

•3491

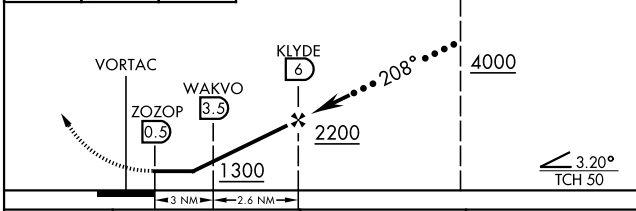
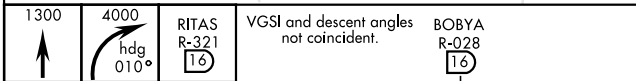
When VGSI inop, circling to Rwy 15, 33 NA at night.



NE-1, 20 MAR 2025 to 17 APR 2025

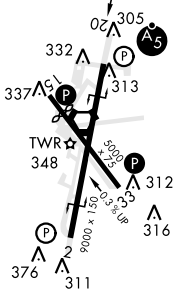
NE-1, 20 MAR 2025 to 17 APR 2025

EMERG SAFE ALT 100 NM 7000



ELEV 270	D THRE 267
----------	-------------------

Rwy 15 ldg 4510'
 Rwy 20 ldg 8919'



CATEGORY	C	D	E
S-20*	800/55	533	(600-1¼)
CIRCLING	1160-2¾	1160-3	1640-3
	890 (900-2¾)	890 (900-3)	1370 (1400-3)
BRADLEY INTL ALTIMETER			
S-20**	840-1¾	573	(600-1¾)
CIRCLING	1200-2¾	1200-3	1680-3
	930 (1000-2¾)	930 (1000-3)	1410 (1500-3)

REIL Rwy 15
 MRL Rwy 15-33 **0**
 HRL Rwy 2-20 **0**

