

TACAN RWY 5

TACAN CEF Chan 87	APCH CRS 052°	Rwy ldg 10,395' TDZE 237' Arprt Elev 241'
-----------------------------	-------------------------	--

[USAF]

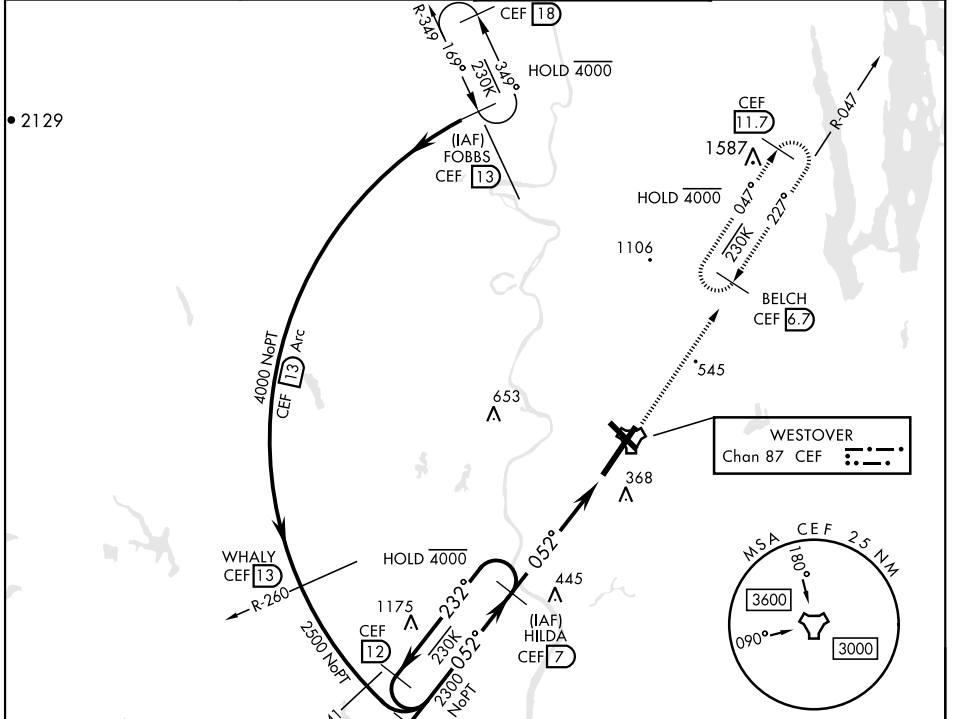
WESTOVER ARB METROPOLITAN (KCEF)

▼ * When ALS inop increase CAT AB RVR to 55 and vis to 1 mile, CAT CDE vis to 1 3/4 miles.
** Circling not authorized all CAT act from RWY 23 clockwise to RWY 33.

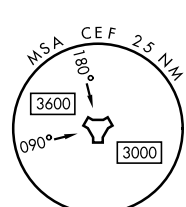


MISSED APPROACH: Climb to 2700 on heading 048° to intercept CEF TACAN R-047 direct BELCH and hold.

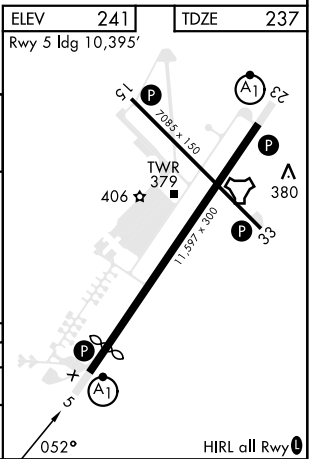
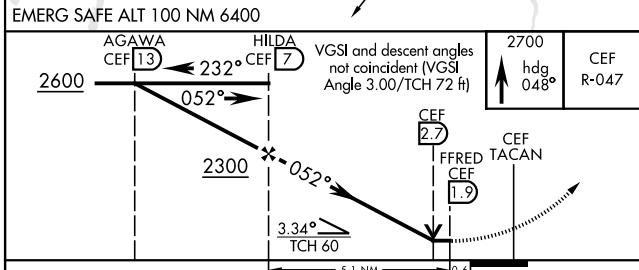
ATIS ★ 127.525	BRADLEY APP CON 125.35 281.5	TOWER ★ 134.85 (CTAF) 0 348.75	GND CON 118.35 275.8
--------------------------	--	---	--------------------------------



WESTOVER
Chan 87 CEF



ELEV 241'	TDZE 237'
Rwy 5 ldg 10,395'	



CATEGORY	A	B	C	D	E
S-5 *	840/24 603 (600-1/2)		840-1 3/8 603 (600-1 3/8)		
CIRCLING **	840-1 599 (600-1)		840-1 3/4 1060-2 3/4 819 (900-2 3/4)	1080-3 839 (900-3)	

TACAN RWY 5

NE-1, 20 MAR 2025 to 17 APR 2025

NE-1, 20 MAR 2025 to 17 APR 2025