

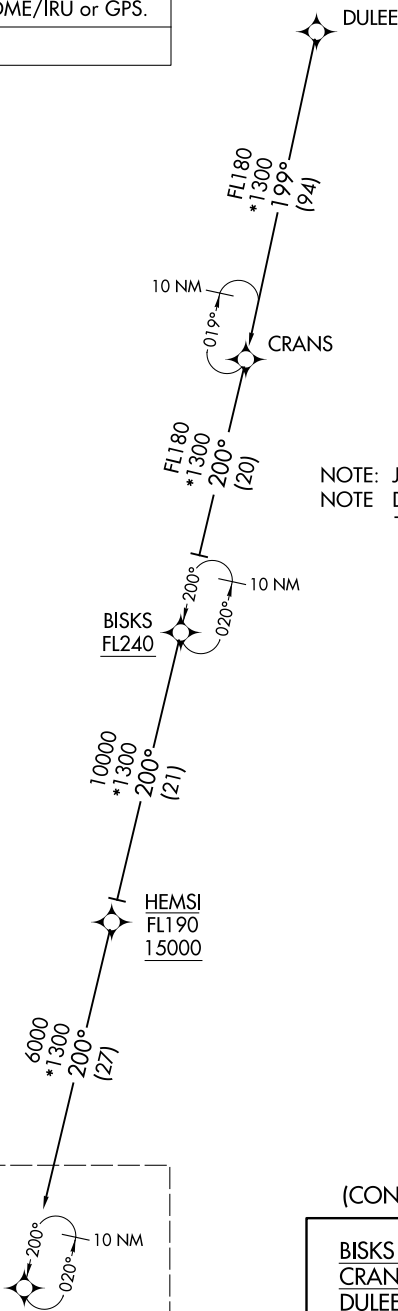
# CLMNT TWO ARRIVAL (RNAV) Transition Routes

WEST PALM BEACH, FLORIDA

RNAV 1 - DME/DME/IRU or GPS.

RADAR required.

PALM BEACH APP CON  
 124.6 317.4  
 F45 CTAF  
 123.075  
 PBI D-ATIS  
 123.75



NOTE: Jet aircraft only.  
 NOTE: Do not file CRANS, BISKI Transitions-  
 To be assigned by ATC

NOTE: Chart not to scale.

(CONTINUED ON FOLLOWING PAGE)

See following page for arrival routes.



BISKI TRANSITION (BISKI.CLMNT2)  
CRANS TRANSITION (CRANS.CLMNT2)  
DULEE TRANSITION (DULEE.CLMNT2)

SE-3, 20 MAR 2025 to 17 APR 2025

SE-3, 20 MAR 2025 to 17 APR 2025