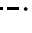


# TTYLR FOUR ARRIVAL

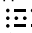
WEST PALM BEACH, FLORIDA

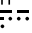
RADAR required. DME required.

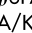
PALM BEACH APP CON  
 125.2 317.4  
 PBI D-ATIS  
 123.75  
 SUA ATIS  
 134.475

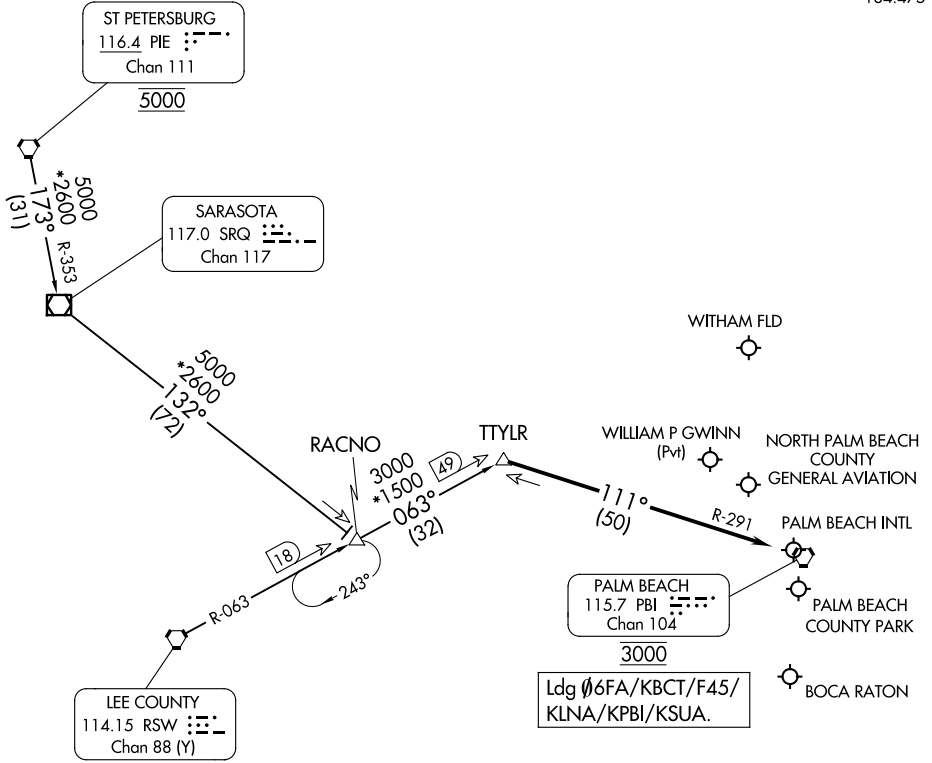
ST PETERSBURG  
 116.4 PIE   
 Chan 111  
 5000

SARASOTA  
 117.0 SRQ   
 Chan 117

LEE COUNTY  
 114.15 RSW   
 Chan 88 (Y)

PALM BEACH  
 115.7 PBI   
 Chan 104  
 3000

Ldg  06FA/KBCT/F45/  
 KLNA/KPBI/KSUA.



SE-3, 20 MAR 2025 to 17 APR 2025

SE-3, 20 MAR 2025 to 17 APR 2025

NOTE: Chart not to scale.

## ARRIVAL ROUTE DESCRIPTION

RACNO TRANSITION (RACNO.TTYLR4): From over RACNO on RSW R-063 to TTYLR, thence. . . .

ST PETERSBURG TRANSITION (PIE.TTYLR4): From over PIE VORTAC on PIE R-173 and SRQ R-353 to SRQ VOR/DME, then on SRQ R-132 to RACNO, then on RSW R-063 to TTYLR, thence. . . .

LANDING ALL AIRPORTS: From TTYLR on PALM BEACH (PBI) R-291 to cross PBI VORTAC at 3000. Expect RADAR vectors.